

BOW SX

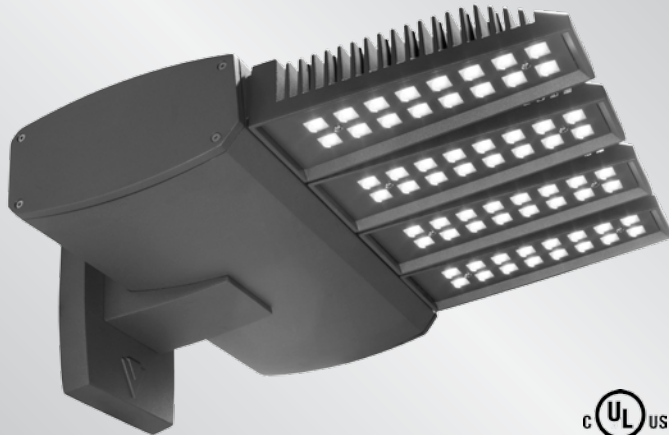
LED Luminaire

The BOW SX uses the successful BOW components to create up to a 17,000+ lumen lighting package for high light level LED applications. A dedicated heat sink for each LED array maximizes the thermal management characteristics of the BOW SX. An adjustable knuckle slip fits over a 2 3/8" Tenon, and allows for up to 90° degrees of vertical adjustment in 10° degree increments. Also available for Wall Mount or Bolt-On Arm mounting.

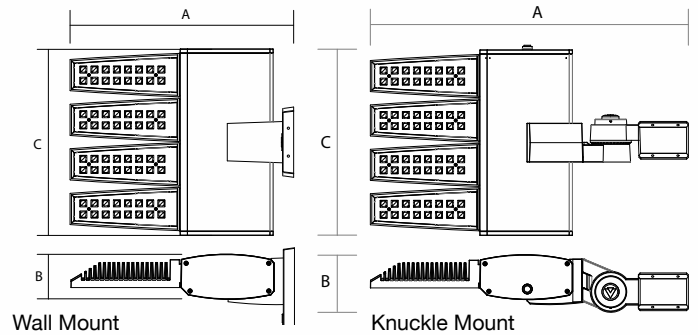
Key Features:

- Die cast & extruded aluminum housings
- Integrated heat sink
- Field adjustable knuckle
- Quick Install
- 1 Amp operations
- 6 IES optic patterns
- 17,000 + lumen packages
- 2X, 3X or 4X LED Array design
- Dimming Capable

BOW SX LED



Dimensional Drawings



Fixture	A	B	C	Max. Watts	Lbs
BSX-2	20" or 28.5"	5"	8.75"	59	15
BSX-3	20" or 28.5"	5"	12.75"	88	19
BSX-4	20" or 28.5"	5"	16.75"	118	24

The new BOW SX LED Series continues the unique contemporary design inspired by the sleek styling of the BOW family. Separating the extruded aluminum driver housing and the individual die-cast aluminum linear LED engines: optimize the life of the LEDs and the Driver(s); and maximizes the lumen output of the fixture.

Each of the individual LED light engines come with 16 LEDs; for a max total of 64 LEDs. Six optical distribution patterns are available.

Available in 4000 or 5000 Kelvin temperature.

A durable polyester powder coat finish is guaranteed for five years; and is available in standard or custom colors.

The BOW SX LED series is an exceptional choice for shopping centers, schools, office buildings, and general area lighting.

Model	Optics	Source	Current	Kelvin	Voltage	Mounting	Finish	Options
BSX-2	Type I (T1)	32 (32LC)	350 (3)	4000K *Neutral white (4K)	120-277 *Universal Voltage (UNV)	Knuckle Mount *Slips over 2 3/8" Tenon with adjustable increments of 10" (KM)	Bronze (BZ)	Button Type Photocell *Specify voltage. (PC120) (PC208) (PC240) (PC277)
	Type II (T2)			5000K *Cool white (5K)			480 (5)	
BSX-3	Type III (T3)	48 (48LC)	530 (5)	347 (8) Not available in 1 amp	Bolt-On Arm 6" (BOA6)	Wall Mount (WM)	Smooth Black (SBK)	Round Pole Plate Adaptor For 4"Ø Pole (RPP4) For 5"Ø Pole (RPP5)
BSX-4	Type IV (T4)	64 (64LC)	700 (7)				1000 (10)	NOTE: UNIT IS ADJUSTABLE FROM HORIZONTAL TO 90° UPWARD MAX WITH THE KNUCKLE MOUNT.
	Type V (T5)			Smooth White (SWH)				
	Type V-W (T5W)			Graphite (GP)				
	Type 15" (T15)			Grey (GY)				
	Type 40" (T40)			Silver Metallic (SL)				
							Custom Color (CC)	

For more detailed information on mounting, wiring or installation instructions, please consult factory. If poles are not ordered with fixtures, please specify mounting requirements. This document contains proprietary information of Visionaire Lighting, LLC. Any use of this information requires the written approval of Visionaire Lighting, LLC. In keeping with our TOM policy of continuous improvement, Visionaire reserves the right to change any specifications contained herein without prior notice.