

BOW LX/SX-II Bolt On Arm / RPP Installation Instructions



BEFORE YOU BEGIN

- Read these instructions completely and carefully.
- Save these instructions for future use.



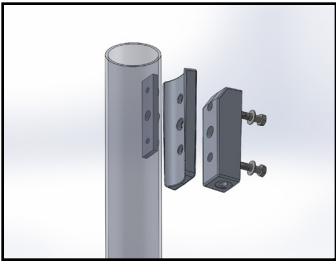
WARNING

- to avoid possible risk of fire or shock, turn off power prior to installation or maintenance preferably at circuit breaker. Product must be installed following all NEC and local electrical codes.

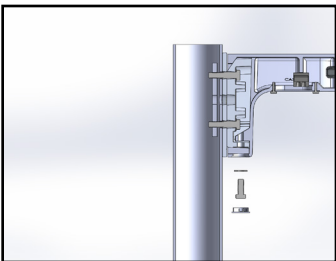
UNPACKING

- This luminaire has been properly packaged so that no damage shall occur during transportaion. Inspect and confirm.

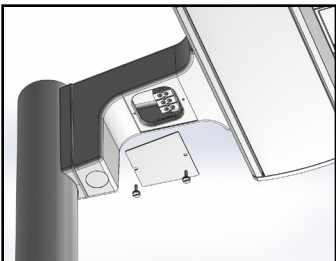
Wire lead color specifications.
(Fixture) Black → Load/Hot
(Fixture) White → Neutral/Common
(Fixture) Green → Ground
(Fixture) Purple → Dim+ (If required)
(Fixture) Grey → Dim- (If required)



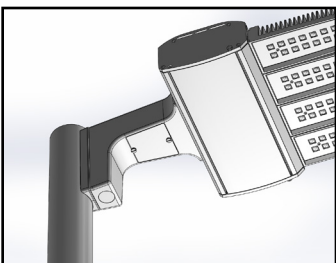
1. Align the holes in the Pole Bolster Plate, Round Pole Adapter (wide end toward the top of the pole), BOA Mount Casting and Pole, and secure in place with 1/2" Flat Washers and 1/2"-13 X 2-1/4" Thread Locking Hex Head Bolts. Tighten to 30 ft-lb.



2. Hang the BOA Housing Casting/ BLX/SX-II Luminaire onto BOA Mount Casting.
3. Secure in place with 1/2" Nord-Lock Washer and 1/2"-13 X 1-1/4" Thread Locking Hex Head Bolt. Tighten to 45 ft-lb.
4. Snap in Plastic Pry Out Plug.



5. Remove the Access Cover Plate by unscrewing #10-24 X 3/4" Knurled Head Thumb Screws.
6. Fish the supply lead wires and connect to the Terminal Block per NEC and/or any applicable local codes.



7. Replace the Access Cover Plate and tighten #10-24 X 3/4" Knurled Head Thumb Screws.



19645 Rancho Way.
Rancho Dominguez CA 90220
310-512-6480
www.visionairelighting.com

Conforms to
UL STD 1598
Certified To
LISTED
CAN/US STD C22.2#250#250.0