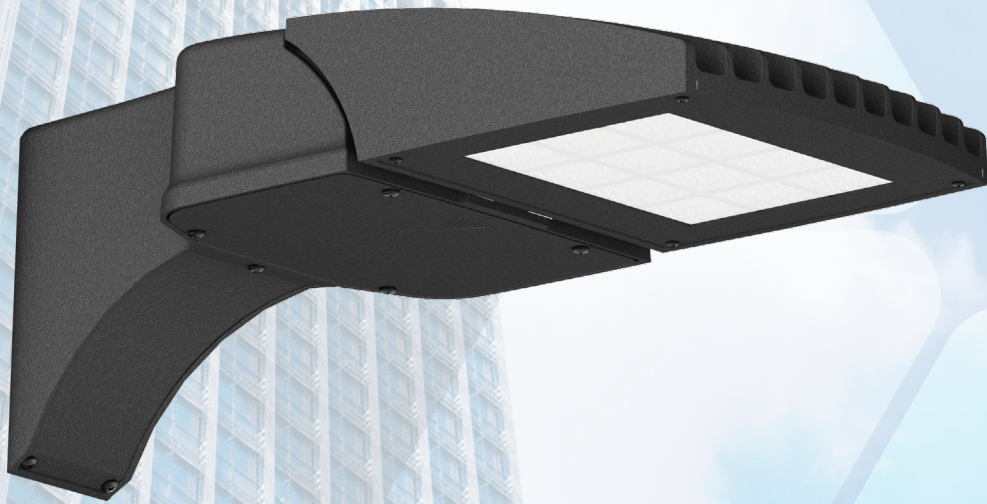




The **V Collection** powered by ARRAY from Visionaire Lighting can elegantly compliment the daytime architecture of your space while providing nighttime illumination that is up to the task and equally as elegant. The collection consists 4 sizes of site lighting fixture, 2 wall mounts and a bollard. Available with our ARRAY LED platform. Scale and design creativity has no limits for any application.

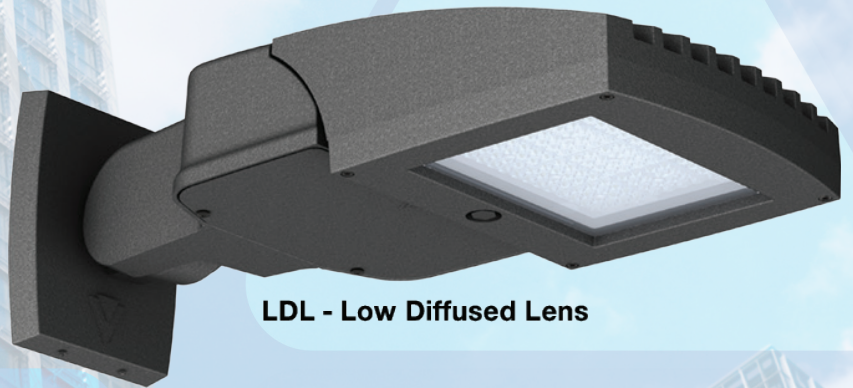
VSX-II Array

Serenity Lens

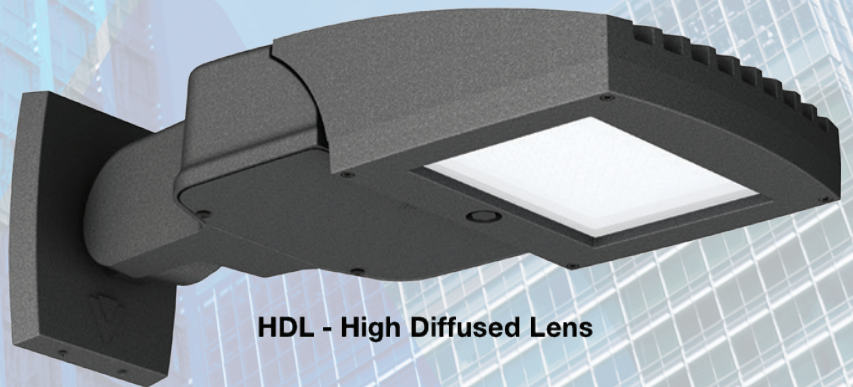


Key Features

- Die Cast aluminum housing
- IP65 Housing and LED optical assembly
- Six New Versatile Mounts (UAM, SAM, AM, KM, MAF, AWM)
- Two Levels of Visual Comfort (LDL - Low Diffused and HDL - High Diffused)
- 5 Specification Grade low glare optics
- 5,000 – 16,000 lumen packages
- 34 - 167wattage range
- 120-277 universal Drivers, 347 & 480 voltage drivers
- 10KV Surge Protector
- 90% Power Factor
- 10 Year Electrical Warranty
- PangeaLink compatible
- Quick Mount Cleat
- Mounts to round or square pole
- 3, 5 and 7 Photocell receptacles
- 0-10V Dimming driver
- Title 24 Compliant Motion Sensor

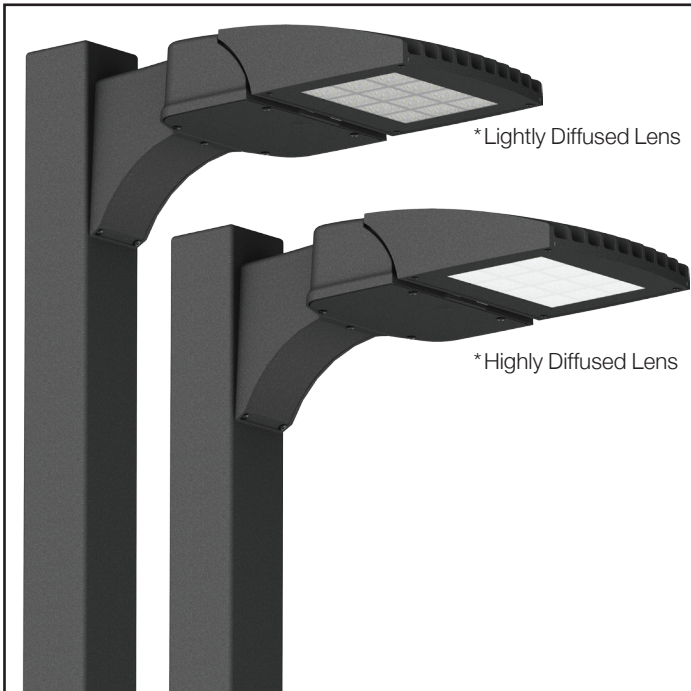


LDL - Low Diffused Lens



HDL - High Diffused Lens

VSX-II Array - Serenity Lens LED Specifications



Project Name:

Catalog Number:

Type:

The new **VSX-II Array - Serenity Lens LED** Series offers clean, functional styling that is defined by its sleek low profile design and rugged construction. It combines the latest LED Array technology, advanced LED thermal management and provides outdoor lighting that is both energy efficient and aesthetically pleasing.

The LED's performance and the driver's life are maximized by enclosing them in two separate die cast aluminum housings.

The VSX-II Array - Serenity Lens LED fixture is offered with lumen packages ranging from 5,000 - 16,000. Ten optical distribution patterns are available. Choose between 3000, 4000 or 5000 Kelvin temperature of the LEDs.

A durable polyester powder coat finish is guaranteed for five years; and is available in standard or custom colors.

The **VSX-II Array - Serenity Lens LED** series is an exceptional choice for commercial parking lots, office complexes, architectural projects, and other general lighting projects.

Ordering Information

MODEL	OPTICS	LUMENS	KELVIN	VOLTAGE	MOUNTING	FINISH	Serenity Lens	OPTIONS	OPTIONS
VSX-II	T1 Type 1	5L	3K 3000K	UNV 120-277V	AM Arm Mount	BZ Bronze	LDL Lightly Diffused Lens	PCR-120	WSC-8 Motion Sensor 8' Mounting Height
	T2 Type 2	7L	4K 4000K	8 347V	SAM Straight Arm Mount W/ Terminal Block (New Construction)	BK Black	HDL Highly Diffused Lens	PCR-208	WSC-20 Motion Sensor 9-20' Mounting Height
	T3L Type 3 Long	10L	5K 5000K	5 480V	UAM Universal ArmW/ Terminal Block Mount (Retrofit)	SBK Smooth Black		PCR-240	WSC-40 Motion Sensor 21-40' Mounting Height
	T4L Type 4 Long	13L			MAF Mast Arm Fitter	WH White		PCR-277	*The WSC option will require (1) FSIR 100 remote for programming
	T5LS Type Long Square	16L			KM Knuckle Mount	SWH Smooth White		PCR-347	UMAP Universal Mast arm fitter
					WM Wall Mount *Requires BAWP	GP Graphite		PCR-480 Photocell & Receptacle	UPMA-S Universal Square Pole Mount Adaptor
				AWM Adjustable Wall Mount	GY Grey		PER	UPMA-R Universal Round Pole Mount Adaptor	
				*Round Pole Plate Adaptors (RPP) are to be ordered separately.	SL Silver Metallic		5PINPER	BAWP Cast Wall Plate	
				*BAWP to be ordered separately	CC Custom Color		7PINPER 3, 5, or 7 Pin Photo Receptacle w/shorting cap Requires Dimming Driver	ROT-R Rotated Optics Right Side	
							DIM 0-10v Dimming Driver	ROT-L Rotated Optics Left Side	
							RPP Round Pole Plate Adaptor		
							VWC Visionaire Wireless Controls *Consult Factory		