

BLX-II ARRAY ROADWAY LED Specifications

BLX-II-4 Arm Mount W/Decorative Shroud Shown



Project Name:

Catalog Number:

Type:

The BLX-II Array Roadway Series is designed for maximum flexibility while providing major energy and maintenance savings. Separating the extruded aluminum driver housing and the individual linear die-cast aluminum LED engines, optimizes the life of the LEDs and the driver(s), and maximizes the lumen output of the fixture.

Each of the individual LED light engines come with 32 LED Arrays for a max total of 256 LED Arrays.

Available in 3000, 4000 or 5000 Kelvin temperature.

The BLX-II Array Roadway is an exceptional choice and the new standard for roadway lighting applications, bringing LED technology with long life and low maintenance.

Ordering Information

| MODEL | OPTICS | LUMENS | KELVIN | VOLTAGE | MOUNTING | FINISH | OPTIONS | OPTIONS |
|----------|--------|--------|--------|------------------|---|--------|---|--|
| BLX-II-3 | T1 | 20L | 3K | UNV *120-277V | PT | GY | PCR-120 Photocell & Receptacle | RPP Round Pole Plate Adaptor For 3'10" - 5'10" Pole |
| | T2 | 25L | 3000K | | MA | SL | | |
| | T3 | 30L | 4K | 8 | KM | BK | PCR-240 Photocell & Receptacle | UPMA Universal Pole Mount Adaptor |
| | T3L | 35L | 4000K | 347V | BOA | SBK | PCR-277 Photocell & Receptacle | UPMA-R Universal Round Pole Mount Adaptor |
| | T4 | 40L | 5K | 5 | AM | WH | PCR-480 Photocell & Receptacle | DS Decorative Shroud |
| | T4L | 45L | 5000K | 480V | AWM | SWH | PER 3 Pin Photo Receptacle w/shorting cap | ROT-R Rotated Optics Right Side |
| | T4A | 50L | | | TM | BZ | 5PINPER 5 Pin Photo Receptacle w/shorting cap Requires Dimming Driver | ROT-L Rotated Optics Left Side |
| BLX-II-4 | T5RS | | | | BAWP | GP | 7PINPER 7 Pin Photo Receptacle w/shorting cap Requires Dimming Driver | |
| | T5RL | 55L | | | AWM | CC | DIM 0-10v Dimming Driver *No Controls | |
| | T5SL | 60L | | | Adjustable Wall Mount BLX-II-3 & BLX-II-4 Only | | WSC-8 Motion Sensor 8' Mounting Height | |
| | | 65L | | | | | WSC-20 Motion Sensor 9-20' Mounting Height | |
| BLX-II-6 | | 70L | | | | | WSC-40 Motion Sensor 21-40' Mounting Height This option will require (1) FSIR-100 remote for programming | |
| | | 80L | | | | | WVC Visionaire Wireless Controls *Consult Factory | |
| | | 90L | | | | | | |
| | | 100L | | | | | | |
| BLX-II-8 | | 110L | | | | | | |
| | | 120L | | | | | | |
| | | 130L | | | | | | |
| | 145L | | | | | | | |

Housing

- The LED light engines are constructed of heavy-duty, die-cast aluminum, with external heat radiating fins.

Driver Compartment

- The separate driver housing is constructed of 6063 T5 extruded aluminum alloy, with machined aluminum end covers and stainless steel fasteners for easy access to the LED driver(s) allowing for cooler operation and longer driver life. One-piece gasketing is utilized throughout the fixture for a weather tight IP66 rating.

Thermal Management

- The BLX-II Array Roadway Series provides excellent overall thermal management by maximizing the fixture's heat sink capabilities. This enables the BLX-II Array Roadway Series to withstand higher ambient temperatures and drive currents without degrading LED life.
- The L70 test determines the point in an LEDs life when it reaches 70 percent of its initial output. The LEDs used in the BLX-II Array Roadway Series have been calculated to have an L70 greater than 100,000 hours in 25° C environments using the Energy Star TM21 Calculator.

Optical System

- High Power/High Lumen output LED's are utilized in the BLX-II Array Roadway series. We offer IES distribution types: I, II, III, IV, V. Specially designed optics types are also available, T3L, T4L, T4A, T5RS, T5RL & T5SL. LED light engines come in multiples of 32 LED Arrays.
- Standard CRI is 70, CRI's of 80 and 90 are available upon special request.
- LED optical Assembly is rated for IP67 using high performance Optical Grade Acrylic.

New LED Array Technology

- 4 Diodes now replace a single Led chip and operate at 25% of the drive current allowing for higher efficiency, less heat and longer life. (10 Year Warranty)
- More LEDs at a lower drive current provides a more comfortable visual effect.

Quali-Guard® Finish

- The finish is a Quali-Guard® textured, chemically pretreated through a multiple-stage washer, electrostatically applied, thermoset polyester powder coat finish, with a minimum of 3-5 millimeter thickness. Finish is oven-baked at 400 °F to promote maximum adherence and finish hardness. All finishes are available in standard and custom colors. Finish is guaranteed for Seven (7) years.

Mounting

- An adjustable knuckle slip fits over a 2 3/8" Tenon, and allows for up to 90° degrees of vertical adjustment in 10° degree increments from horizontal, as well as full side to side adjustment with the knuckle mount.
- The Bolt -On Arm (BOA) utilizes a 2 piece cleat system for easy installation. A Round Pole Plate Adaptor (RPP) is required for mounting to round poles.
- Mast Arm Fitter fits over a 2 3/8" tenon.
- Post Top fits over a 2 3/8" tenon and is adjustable up to 45°.
- Trunnion Mount is adjustable up to 45°
- Adjustable Wall Mount BLX-II-3 & BLX-II-4 Only
- Bolt-On Arm Wall Plate
- Bolt-On Arm Wall Plate-XL

Electrical Assembly

- The BLX-II Array Roadway Series is supplied with a choice of 350, 530, 700, 1000, 1200 or 1400 mA high-performance LED drivers, that accept 120v thru 480v, 50 Hz to 60 Hz, input. Power factor of 95%. Rated for -40° C to +55° C operations.
- 20 kV surge protector supplied as standard. Meets ANSI C82.77-5-2015. Meets ANSI C136.2-2015. Meets IEEE C62.41.2. Meets US Dept of Energy MSSLC Model Spec. IP66 Rated.
- 85 Amp, 600 Volt AC/DC Terminal block supplied as standard except for Knuckle Mount. #4-14# AWG Copper wire only.
- 0-10v Dimming Driver supplied as standard.
- LED drivers used in the BLX-II Array Roadway series are all high efficiency (>90%) class 1 drivers. Minimum internal surge protection of 3KV/ internal fusing (some configurations have higher), 10% minimum dimming, 100,000 hr rated lifetime @ 25° C. All configurations meet DLC minimum requirements of THD <20%, PF>0.90. Consult factory for datasheets/technical information pertaining to drivers.

Warranty

- Ten (10) year Limited Warranty on electrical components, Seven (7) year on finish. For full warranty information, please visit visionairelighting.com.

Options

- 5Pin ANSI C136.41
- 7Pin ANSI C136.41
- Photocell & Receptacle
- Photo Receptacle
- Round pole plate adaptor
- Motion Sensor
- Pole Mounted Motion Sensor
- Universal Pole Mount Adaptor (BLX-II-3, BLX-II-4 & BLX-II-6 Only)
- Decorative Shroud
- Wireless Controls
- Rotated Optics

Listings

- BOW LX II Array Series is UL listed, suitable for wet locations
- LM79 and LM80
- RoHS compliant
- Meets ANSI C136.31-2010 3G Vibration Standards for:
 - Knuckle Mount
 - Mast Arm Mount
 - Post Top Mount
 - Trunnion Mount
- Powder Coated Tough™
- IP-66 Rated

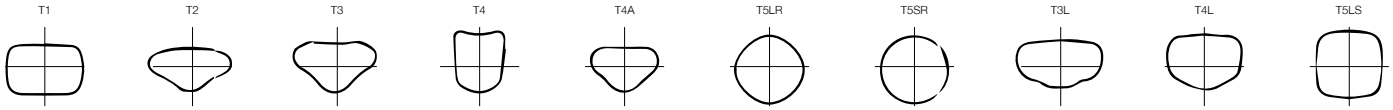
DesignLights Consortium (DLC) qualified Product. Some configurations of this product family may not be DesignLights Consortium (DLC) listed, please refer to the DLC qualified products list to confirm listed configurations. <http://www.designlights.org/> 3000K must be selected with a fixed mount for IDA certification.



BLX-II ARRAY Roadway LED Specifications

Photometric Optical Summary

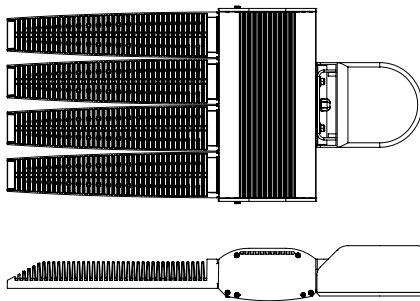
Not all optics are available on all fixtures. Check ordering chart for availability



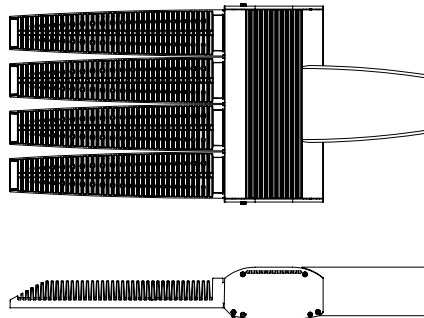
Dimensions

| Post Top | | Mast Arm | | Knuckle Mount | | Bolt-On Arm | | Trunnion | |
|----------------|--|----------------|--|----------------|--|----------------|--|----------------|--|
| Width: | BLX-II-3 15" BLX-II-4 17" BLX-II-6 28" BLX-II-8 33" | Width: | BLX-II-3 15" BLX-II-4 17" BLX-II-6 28" BLX-II-8 33" | Width: | BLX-II-3 15" BLX-II-4 17" BLX-II-6 28" BLX-II-8 33" | Width: | BLX-II-3 15" BLX-II-4 17" BLX-II-6 28" BLX-II-8 33" | Width: | BLX-II-3 15" BLX-II-4 17" BLX-II-6 28" BLX-II-8 33" |
| Depth: | BLX-II-3 36" BLX-II-4 36" BLX-II-6 36" BLX-II-8 36" | Depth: | BLX-II-3 36" BLX-II-4 36" BLX-II-6 36" BLX-II-8 36" | Depth: | BLX-II-3 37" BLX-II-4 37" BLX-II-6 37" BLX-II-8 37" | Depth: | BLX-II-3 34" BLX-II-4 34" BLX-II-6 34" BLX-II-8 34" | Depth: | BLX-II-3 33" BLX-II-4 33" BLX-II-6 33" BLX-II-8 33" |
| Height: | BLX-II-3 6" BLX-II-4 6" BLX-II-6 6" BLX-II-8 6" | Height: | BLX-II-3 5" BLX-II-4 5" BLX-II-6 5" BLX-II-8 5" | Height: | BLX-II-3 5" BLX-II-4 5" BLX-II-6 5" BLX-II-8 5" | Height: | BLX-II-3 5"/9" BLX-II-4 5"/9" BLX-II-6 5"/9" BLX-II-8 5"/9" | Height: | BLX-II-3 5" BLX-II-4 5" BLX-II-6 5" BLX-II-8 5" |

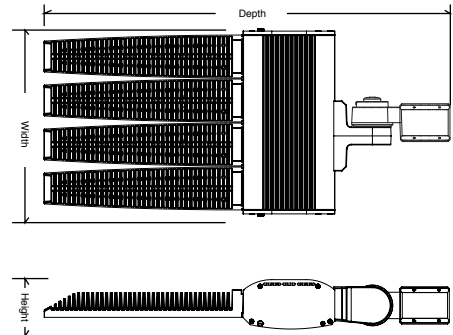
Post Top



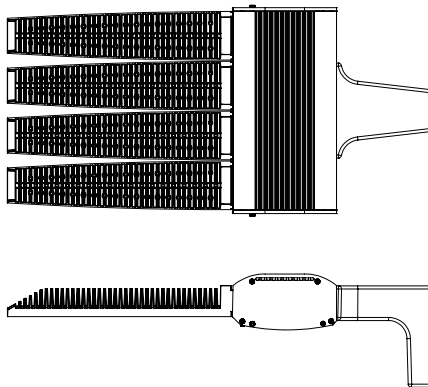
Mast Arm



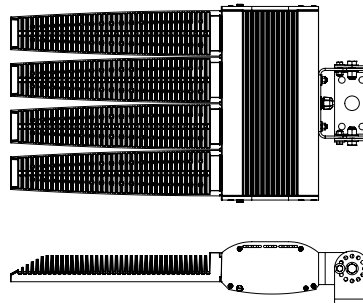
Knuckle Mount



Bolt-On Arm



Trunnion Mount



| BLX-II EPA Data | | | | |
|-----------------|----------|----------|----------|----------|
| Tilt Deg. | BLX-II-3 | BLX-II-4 | BLX-II-6 | BLX-II-8 |
| 0 | .7 | .7 | .8 | 1.1 |
| 10 | .71 | .9 | 1.2 | 1.6 |
| 20 | 1.02 | 1.3 | 1.8 | 2 |
| 30 | 1.32 | 1.7 | 2.4 | 3.1 |
| 40 | 1.62 | 2.1 | 3 | 3.9 |
| 50 | 1.86 | 2.4 | 3.4 | 4.5 |
| 60 | 2.07 | 2.6 | 3.8 | 5 |
| 70 | 2.21 | 2.8 | 4.1 | 5.4 |
| 80 | 2.29 | 2.9 | 4.3 | 5.7 |
| 90 | 2.30 | 3 | 4.5 | 6.1 |
| Weight | | | | |
| BLX-II | 45 LBS | 54 LBS | 68 LBS | 96 LBS |

LED Specifications **BLX-II ARRAY ROADWAY**

| BLX II 3K LUMEN DATA | | | | | | | | | | | | | |
|--|---------|-------------------|--------|--------|--------|--------|--------|--------|--------|--------|--------|--------|-------|
| Lumens | Current | LEDs | T1 | T2 | T3 | T3L | T4 | T4L | T4A | T5RS | T5RL | T5SL | Watts |
| 20L | 530 | 96AR BLX-II-3 | 19826 | 19730 | 19363 | 18445 | 19548 | 18628 | 19648 | 19862 | 19207 | 19943 | 149 |
| 25L | 600 | | 22801 | 22690 | 22268 | 21059 | 22481 | 21268 | 22596 | 22842 | 22089 | 22935 | 174 |
| 30L | 700 | | 25776 | 25651 | 25174 | 23673 | 25415 | 23908 | 25544 | 25823 | 24970 | 25928 | 200 |
| 35L | 900 | | 31806 | 31651 | 31062 | 29502 | 31360 | 29795 | 31519 | 31863 | 30811 | 31993 | 252 |
| 40L | 1050 | | 37835 | 37651 | 36951 | 35331 | 37304 | 35682 | 37494 | 37903 | 36652 | 38057 | 305 |
| 45L | 1200 | | 41993 | 41788 | 41012 | 38106 | 41404 | 38485 | 41614 | 42069 | 40680 | 42240 | 346 |
| 50L | 1400 | | 47673 | 47441 | 46559 | 42713 | 47004 | 43138 | 47243 | 47759 | 46183 | 47953 | 397 |
| 55L | 1050 | 128AR BLX-II-4 | 48977 | 48738 | 47832 | 47107 | 48290 | 47577 | 48535 | 49065 | 47446 | 49265 | 407 |
| 60L | 1200 | | 55896 | 55623 | 54590 | 50808 | 55112 | 51314 | 55392 | 55996 | 54149 | 56225 | 456 |
| 65L | 1300 | | 59695 | 59404 | 58300 | 53879 | 58858 | 54415 | 59157 | 59803 | 57829 | 60046 | 498 |
| 70L | 1400 | | 63495 | 63185 | 62011 | 56950 | 62604 | 57517 | 62922 | 63609 | 61510 | 63868 | 541 |
| 80L | 1000 | 192AR BLX-II-6 | 66978 | 66651 | 65413 | 59004 | 66039 | 59591 | 66374 | 67098 | 64884 | 67372 | 508 |
| 90L | 1100 | | 84116 | 83706 | 82150 | 73436 | 82936 | 74168 | 83357 | 84267 | 81486 | 84610 | 653 |
| 100L | 1300 | | 95189 | 94725 | 92965 | 80819 | 93854 | 81623 | 94331 | 95360 | 92213 | 95748 | 743 |
| 110L | 1400 | | 100910 | 100419 | 98553 | 85426 | 99495 | 86275 | 100001 | 101092 | 97756 | 101504 | 793 |
| 120L | 1100 | 256AR BLX-II-8 | 110628 | 110089 | 108043 | 97915 | 109077 | 98890 | 109631 | 110827 | 107170 | 111279 | 861 |
| 130L | 1200 | | 117112 | 116541 | 114376 | 101615 | 115470 | 102627 | 116056 | 117323 | 113451 | 117801 | 905 |
| 145L | 1400 | | 133266 | 132616 | 129400 | 113902 | 130638 | 115034 | 131302 | 132734 | 129100 | 134049 | 1102 |
| BLX II 4K LUMEN DATA | | | | | | | | | | | | | |
| 20L | 530 | 96AR BLX-II-3 | 21956 | 21849 | 21443 | 20426 | 21648 | 20629 | 21758 | 21995 | 21270 | 22085 | 149 |
| 25L | 600 | | 25251 | 25127 | 24661 | 23321 | 24896 | 23553 | 25023 | 25296 | 24461 | 25399 | 174 |
| 30L | 700 | | 28545 | 28406 | 27878 | 26216 | 28145 | 26477 | 28288 | 28596 | 27653 | 28713 | 200 |
| 35L | 900 | | 35222 | 35050 | 34399 | 32761 | 34728 | 32996 | 34905 | 35285 | 34121 | 35429 | 252 |
| 40L | 1050 | | 41899 | 41695 | 40920 | 39126 | 41312 | 39515 | 41522 | 41975 | 40590 | 42146 | 305 |
| 45L | 1200 | | 46504 | 46277 | 45417 | 42200 | 45852 | 42619 | 46085 | 46588 | 45050 | 46777 | 346 |
| 50L | 1400 | | 52794 | 52537 | 51560 | 47301 | 52054 | 47771 | 52318 | 52889 | 51144 | 53104 | 397 |
| 55L | 1050 | 128AR BLX-II-4 | 54238 | 53973 | 52970 | 52168 | 53477 | 52687 | 53749 | 54335 | 52542 | 54557 | 407 |
| 60L | 1200 | | 61900 | 61598 | 60454 | 56265 | 61032 | 56826 | 61342 | 62012 | 59965 | 62264 | 456 |
| 65L | 1300 | | 66108 | 65785 | 64563 | 59667 | 65181 | 60261 | 65512 | 66227 | 64041 | 66496 | 498 |
| 70L | 1400 | | 70315 | 69973 | 68672 | 63068 | 69329 | 63695 | 69681 | 70442 | 68117 | 70729 | 541 |
| 80L | 1000 | 192AR BLX-II-6 | 74173 | 73811 | 72440 | 65342 | 73132 | 65992 | 73504 | 74306 | 71854 | 74609 | 508 |
| 90L | 1100 | | 93151 | 92697 | 90975 | 81325 | 91845 | 82135 | 92312 | 93319 | 90240 | 93699 | 653 |
| 100L | 1300 | | 105414 | 104900 | 102951 | 89500 | 103936 | 90391 | 104464 | 105604 | 102119 | 106034 | 743 |
| 110L | 1400 | | 111750 | 111206 | 109139 | 94602 | 110183 | 95543 | 110743 | 111951 | 108257 | 112407 | 793 |
| 120L | 1100 | 256AR BLX-II-8 | 129692 | 129060 | 126662 | 108433 | 127873 | 109513 | 128523 | 129925 | 125638 | 130455 | 905 |
| 130L | 1200 | | 122512 | 121915 | 119649 | 112531 | 120794 | 113652 | 121407 | 122732 | 118682 | 123232 | 861 |
| 145L | 1400 | | 147581 | 146862 | 143300 | 126137 | 144671 | 127391 | 145406 | 146992 | 142968 | 148449 | 1102 |
| Visit www.visionairelighting.com for up-to-the-minute chart information, including types not listed here. *For 3K multiply 4K values by 1.0 | | | | | | | | | | | | | |

BLX-II ARRAY ROADWAY LED Specifications

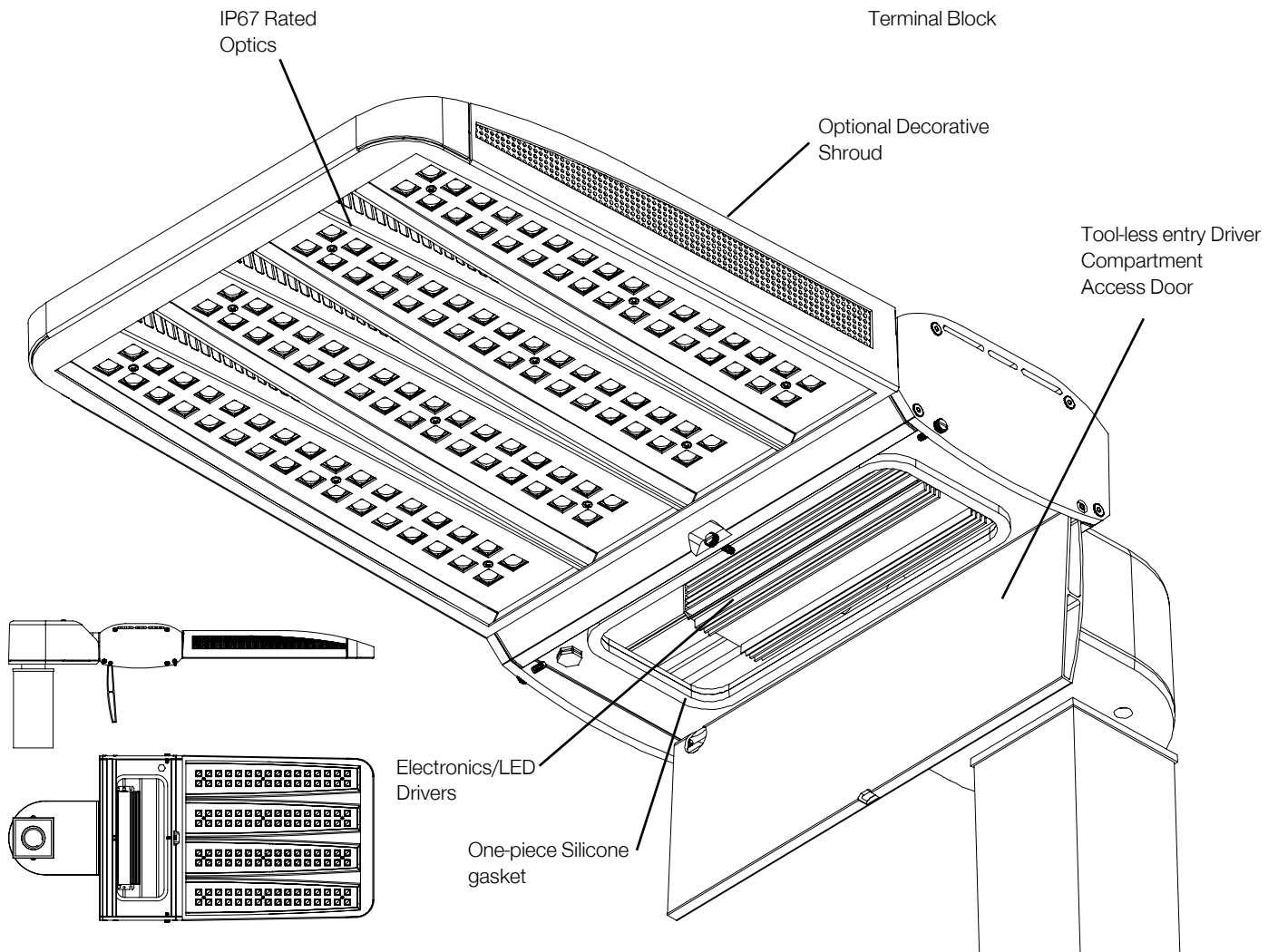
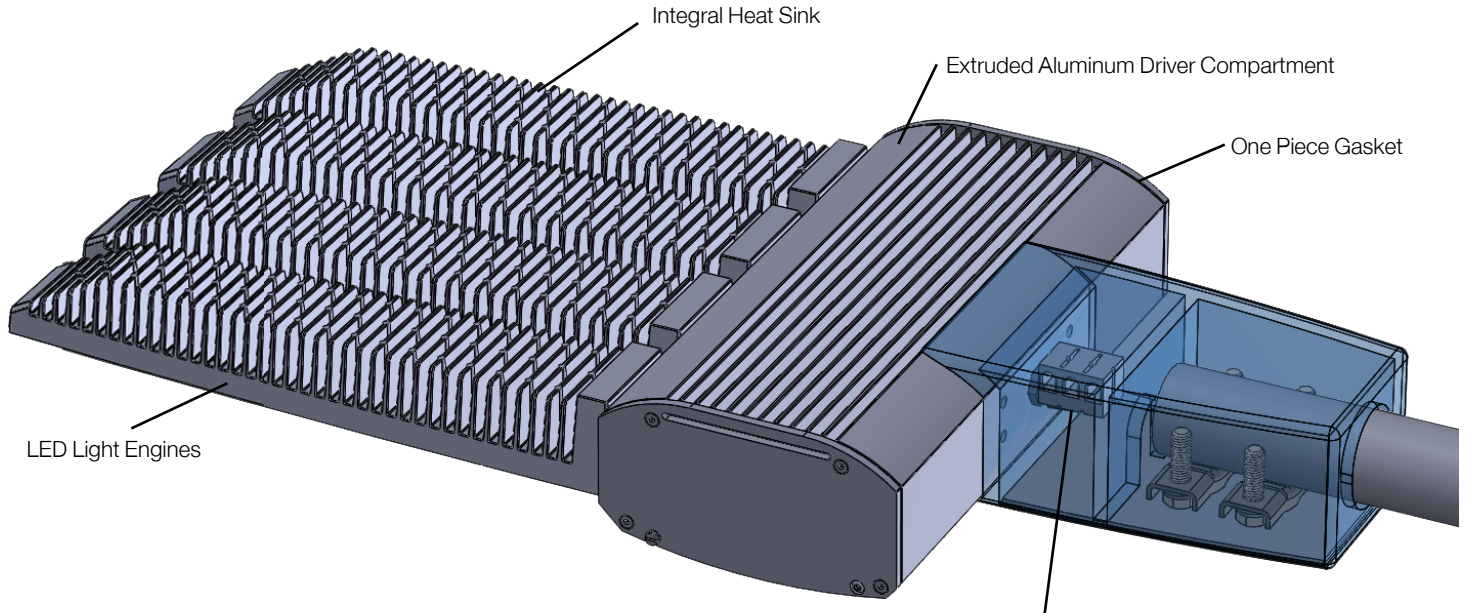
| BLX II 3K LPW DATA | | | | | | | | | | | | | |
|---|---------|-------------------|-----|-----|-----|-----|-----|-----|-----|------|------|------|-------|
| Lumens | Current | LEDs | T1 | T2 | T3 | T3L | T4 | T4L | T4A | T5RS | T5RL | T5SL | Watts |
| 20L | 530 | 96AR BLX-II-3 | 133 | 133 | 130 | 124 | 131 | 125 | 132 | 134 | 129 | 134 | 149 |
| 25L | 600 | | 131 | 130 | 128 | 121 | 129 | 122 | 130 | 131 | 127 | 132 | 174 |
| 30L | 700 | | 129 | 129 | 126 | 119 | 127 | 120 | 128 | 129 | 125 | 130 | 200 |
| 35L | 900 | | 126 | 125 | 123 | 117 | 124 | 118 | 125 | 126 | 122 | 127 | 252 |
| 40L | 1050 | | 124 | 123 | 121 | 116 | 122 | 117 | 123 | 124 | 120 | 125 | 305 |
| 45L | 1200 | | 122 | 121 | 119 | 110 | 120 | 111 | 120 | 122 | 118 | 122 | 346 |
| 50L | 1400 | | 120 | 120 | 117 | 108 | 118 | 109 | 119 | 120 | 116 | 121 | 397 |
| 55L | 1050 | 128AR BLX-II-4 | 120 | 120 | 118 | 116 | 119 | 117 | 119 | 121 | 117 | 121 | 407 |
| 60L | 1200 | | 123 | 122 | 120 | 111 | 121 | 113 | 121 | 123 | 119 | 123 | 456 |
| 65L | 1300 | | 120 | 119 | 117 | 108 | 118 | 109 | 119 | 120 | 116 | 120 | 498 |
| 70L | 1400 | | 117 | 117 | 115 | 105 | 116 | 106 | 116 | 118 | 114 | 118 | 541 |
| 80L | 1000 | 192AR BLX-II-6 | 132 | 131 | 129 | 116 | 130 | 117 | 131 | 132 | 128 | 133 | 508 |
| 90L | 1100 | | 129 | 128 | 126 | 112 | 127 | 114 | 128 | 129 | 125 | 130 | 653 |
| 100L | 1300 | | 128 | 128 | 125 | 109 | 126 | 110 | 127 | 128 | 124 | 129 | 743 |
| 110L | 1400 | | 127 | 127 | 124 | 108 | 125 | 109 | 126 | 127 | 123 | 128 | 793 |
| 120L | 1100 | 256AR BLX-II-8 | 128 | 128 | 125 | 114 | 127 | 115 | 127 | 129 | 124 | 129 | 861 |
| 130L | 1200 | | 129 | 129 | 126 | 112 | 128 | 113 | 128 | 130 | 125 | 130 | 905 |
| 145L | 1400 | | 121 | 120 | 117 | 103 | 119 | 104 | 119 | 120 | 117 | 122 | 1102 |
| BLX II 4K LPW DATA | | | | | | | | | | | | | |
| 20L | 530 | 96AR BLX-II-3 | 148 | 147 | 144 | 137 | 146 | 139 | 146 | 148 | 143 | 149 | 149 |
| 25L | 600 | | 145 | 144 | 142 | 134 | 143 | 135 | 144 | 145 | 140 | 146 | 174 |
| 30L | 700 | | 143 | 142 | 140 | 131 | 141 | 133 | 142 | 143 | 139 | 144 | 200 |
| 35L | 900 | | 140 | 139 | 136 | 130 | 138 | 131 | 138 | 140 | 135 | 140 | 252 |
| 40L | 1050 | | 137 | 137 | 134 | 128 | 135 | 129 | 136 | 137 | 133 | 138 | 305 |
| 45L | 1200 | | 135 | 134 | 131 | 122 | 133 | 123 | 133 | 135 | 130 | 135 | 346 |
| 50L | 1400 | | 133 | 132 | 130 | 119 | 131 | 120 | 132 | 133 | 129 | 134 | 397 |
| 55L | 1050 | 128AR BLX-II-4 | 133 | 133 | 130 | 128 | 131 | 130 | 132 | 134 | 129 | 134 | 407 |
| 60L | 1200 | | 136 | 135 | 133 | 123 | 134 | 125 | 134 | 136 | 131 | 137 | 456 |
| 65L | 1300 | | 133 | 132 | 130 | 120 | 131 | 121 | 131 | 133 | 128 | 133 | 498 |
| 70L | 1400 | | 130 | 129 | 127 | 117 | 128 | 118 | 129 | 130 | 126 | 131 | 541 |
| 80L | 1000 | 192AR BLX-II-6 | 146 | 145 | 143 | 129 | 144 | 130 | 145 | 146 | 141 | 147 | 508 |
| 90L | 1100 | | 143 | 142 | 139 | 124 | 141 | 126 | 141 | 143 | 138 | 143 | 653 |
| 100L | 1300 | | 142 | 141 | 139 | 120 | 140 | 122 | 141 | 142 | 137 | 143 | 743 |
| 110L | 1400 | | 141 | 140 | 138 | 119 | 139 | 120 | 140 | 141 | 136 | 142 | 793 |
| 120L | 1100 | 256AR BLX-II-8 | 143 | 143 | 140 | 120 | 141 | 121 | 142 | 144 | 139 | 144 | 905 |
| 130L | 1200 | | 142 | 142 | 139 | 131 | 140 | 132 | 141 | 142 | 138 | 143 | 861 |
| 145L | 1400 | | 134 | 133 | 130 | 114 | 131 | 116 | 132 | 133 | 130 | 135 | 1102 |
| <small>Visit www.visionairelighting.com for up-to-the-minute chart information, including types not listed here. *For 5K multiply 4K values by 1.0</small> | | | | | | | | | | | | | |

LED Specifications **BLX-II ARRAY ROADWAY**

| BLX II 3K BUG DATA | | | | | | | | | | | | | | | | | | | | | | | | | | | | | | | | | |
|--------------------|---------|-------------------|-------------------|---|---|----|---|---|----|---|---|-----|---|---|----|---|---|-----|---|---|-----|---|---|------|---|---|------|---|---|------|---|---|-------|
| Lumens | Current | LEDs | T1 | | | T2 | | | T3 | | | T3L | | | T4 | | | T4L | | | T4A | | | T5RS | | | T5RL | | | T5SL | | | Watts |
| | | | B | U | G | B | U | G | B | U | G | | | | B | U | G | | | | B | U | G | B | U | G | B | U | G | B | U | G | |
| 20L | 530 | 96AR BLX-II-3 | 4 | 0 | 4 | 3 | 0 | 3 | 3 | 0 | 3 | 3 | 0 | 5 | 3 | 0 | 3 | 3 | 0 | 4 | 3 | 0 | 3 | 4 | 0 | 2 | 4 | 0 | 3 | 5 | 0 | 3 | 149 |
| 25L | 600 | | 4 | 0 | 4 | 3 | 0 | 3 | 3 | 0 | 3 | 3 | 0 | 5 | 3 | 0 | 4 | 3 | 0 | 5 | 3 | 0 | 3 | 4 | 0 | 2 | 5 | 0 | 3 | 5 | 0 | 3 | 174 |
| 30L | 700 | | 5 | 0 | 5 | 3 | 0 | 3 | 3 | 0 | 4 | 4 | 0 | 5 | 3 | 0 | 4 | 3 | 0 | 5 | 3 | 0 | 3 | 4 | 0 | 2 | 5 | 0 | 4 | 5 | 0 | 3 | 200 |
| 35L | 900 | | 5 | 0 | 5 | 4 | 0 | 4 | 3 | 0 | 4 | 4 | 0 | 5 | 4 | 0 | 4 | 4 | 0 | 5 | 4 | 0 | 3 | 5 | 0 | 3 | 5 | 0 | 4 | 5 | 0 | 4 | 252 |
| 40L | 1050 | | 5 | 0 | 5 | 4 | 0 | 4 | 4 | 0 | 4 | 4 | 0 | 5 | 4 | 0 | 5 | 4 | 0 | 5 | 4 | 0 | 4 | 5 | 0 | 3 | 5 | 0 | 5 | 5 | 0 | 4 | 305 |
| 45L | 1200 | | 5 | 0 | 5 | 4 | 0 | 4 | 4 | 0 | 5 | 4 | 0 | 5 | 4 | 0 | 5 | 4 | 0 | 5 | 4 | 0 | 4 | 5 | 0 | 4 | 5 | 0 | 5 | 5 | 0 | 4 | 346 |
| 50L | 1400 | | 5 | 0 | 5 | 4 | 0 | 4 | 4 | 0 | 5 | 4 | 0 | 5 | 4 | 0 | 5 | 4 | 0 | 5 | 4 | 0 | 4 | 5 | 0 | 4 | 5 | 0 | 5 | 5 | 0 | 5 | 397 |
| 55L | 1050 | | 128AR BLX-II-4 | 5 | 0 | 5 | 4 | 0 | 4 | 4 | 0 | 5 | 5 | 0 | 5 | 4 | 0 | 5 | 4 | 0 | 5 | 4 | 0 | 4 | 5 | 0 | 4 | 5 | 0 | 5 | 5 | 0 | 5 |
| 60L | 1200 | 5 | | 0 | 5 | 5 | 0 | 5 | 4 | 0 | 5 | 5 | 0 | 5 | 5 | 0 | 5 | 4 | 0 | 5 | 5 | 0 | 4 | 5 | 0 | 4 | 5 | 0 | 5 | 5 | 0 | 5 | 456 |
| 65L | 1300 | 5 | | 0 | 5 | 5 | 0 | 5 | 5 | 0 | 5 | 5 | 0 | 5 | 5 | 0 | 5 | 5 | 0 | 5 | 5 | 0 | 4 | 5 | 0 | 4 | 5 | 0 | 5 | 5 | 0 | 5 | 498 |
| 70L | 1400 | 5 | | 0 | 5 | 5 | 0 | 5 | 5 | 0 | 5 | 5 | 0 | 5 | 5 | 0 | 5 | 5 | 0 | 5 | 5 | 0 | 4 | 5 | 0 | 5 | 5 | 0 | 5 | 5 | 0 | 5 | 541 |
| 80L | 1000 | 192AR BLX-II-6 | 5 | 0 | 5 | 5 | 0 | 5 | 5 | 0 | 5 | 5 | 0 | 5 | 5 | 0 | 5 | 5 | 0 | 5 | 5 | 0 | 4 | 5 | 0 | 5 | 5 | 0 | 5 | 5 | 0 | 5 | 508 |
| 90L | 1100 | | 5 | 0 | 5 | 5 | 0 | 5 | 5 | 0 | 5 | 5 | 0 | 5 | 5 | 0 | 5 | 5 | 0 | 5 | 5 | 0 | 5 | 5 | 0 | 5 | 5 | 0 | 5 | 5 | 0 | 5 | 653 |
| 100L | 1300 | | 5 | 0 | 5 | 5 | 0 | 5 | 5 | 0 | 5 | 5 | 0 | 5 | 5 | 0 | 5 | 5 | 0 | 5 | 5 | 0 | 5 | 5 | 0 | 5 | 5 | 0 | 5 | 5 | 0 | 5 | 743 |
| 110L | 1400 | | 5 | 0 | 5 | 5 | 0 | 5 | 5 | 0 | 5 | 5 | 0 | 5 | 5 | 0 | 5 | 5 | 0 | 5 | 5 | 0 | 5 | 5 | 0 | 5 | 5 | 0 | 5 | 5 | 0 | 5 | 793 |
| 120L | 1100 | 256AR BLX-II-8 | 5 | 0 | 5 | 5 | 0 | 5 | 5 | 0 | 5 | 5 | 0 | 5 | 5 | 0 | 5 | 5 | 0 | 5 | 5 | 0 | 5 | 5 | 0 | 5 | 5 | 0 | 5 | 5 | 0 | 5 | 861 |
| 130L | 1200 | | 5 | 0 | 5 | 5 | 0 | 5 | 5 | 0 | 5 | 5 | 0 | 5 | 5 | 0 | 5 | 5 | 0 | 5 | 5 | 0 | 5 | 5 | 0 | 5 | 5 | 0 | 5 | 5 | 0 | 5 | 905 |
| 145L | 1400 | | 5 | 0 | 5 | 5 | 0 | 5 | 5 | 0 | 5 | 5 | 0 | 5 | 5 | 0 | 5 | 5 | 0 | 5 | 5 | 0 | 5 | 5 | 0 | 5 | 5 | 0 | 5 | 5 | 0 | 5 | 1102 |
| BLX II 4K BUG DATA | | | | | | | | | | | | | | | | | | | | | | | | | | | | | | | | | |
| 20L | 530 | 96AR BLX-II-3 | 4 | 0 | 4 | 3 | 0 | 3 | 3 | 0 | 3 | 3 | 0 | 5 | 3 | 0 | 3 | 3 | 0 | 4 | 3 | 0 | 3 | 4 | 0 | 2 | 5 | 0 | 3 | 5 | 0 | 3 | 149 |
| 25L | 600 | | 5 | 0 | 5 | 3 | 0 | 3 | 3 | 0 | 4 | 4 | 0 | 5 | 3 | 0 | 4 | 3 | 0 | 5 | 3 | 0 | 3 | 4 | 0 | 2 | 5 | 0 | 4 | 5 | 0 | 3 | 174 |
| 30L | 700 | | 5 | 0 | 5 | 4 | 0 | 4 | 3 | 0 | 4 | 4 | 0 | 5 | 3 | 0 | 4 | 3 | 0 | 5 | 3 | 0 | 3 | 5 | 0 | 3 | 5 | 0 | 4 | 5 | 0 | 4 | 200 |
| 35L | 900 | | 5 | 0 | 5 | 4 | 0 | 4 | 4 | 0 | 4 | 4 | 0 | 5 | 4 | 0 | 5 | 4 | 0 | 5 | 4 | 0 | 4 | 5 | 0 | 3 | 5 | 0 | 4 | 5 | 0 | 4 | 252 |
| 40L | 1050 | | 5 | 0 | 5 | 4 | 0 | 4 | 4 | 0 | 5 | 4 | 0 | 5 | 4 | 0 | 5 | 4 | 0 | 5 | 4 | 0 | 4 | 5 | 0 | 4 | 5 | 0 | 5 | 5 | 0 | 4 | 305 |
| 45L | 1200 | | 5 | 0 | 5 | 4 | 0 | 4 | 4 | 0 | 5 | 4 | 0 | 5 | 4 | 0 | 5 | 4 | 0 | 5 | 4 | 0 | 4 | 5 | 0 | 4 | 5 | 0 | 5 | 5 | 0 | 5 | 346 |
| 50L | 1400 | | 5 | 0 | 5 | 5 | 0 | 4 | 4 | 0 | 5 | 5 | 0 | 5 | 5 | 0 | 5 | 4 | 0 | 5 | 5 | 0 | 4 | 5 | 0 | 4 | 5 | 0 | 5 | 5 | 0 | 5 | 397 |
| 55L | 1050 | | 128AR BLX-II-4 | 5 | 0 | 5 | 5 | 0 | 5 | 4 | 0 | 5 | 5 | 0 | 5 | 5 | 0 | 5 | 4 | 0 | 5 | 5 | 0 | 4 | 5 | 0 | 4 | 5 | 0 | 5 | 5 | 0 | 5 |
| 60L | 1200 | 5 | | 0 | 5 | 5 | 0 | 5 | 5 | 0 | 5 | 5 | 0 | 5 | 5 | 0 | 5 | 5 | 0 | 5 | 5 | 0 | 4 | 5 | 0 | 4 | 5 | 0 | 5 | 5 | 0 | 5 | 456 |
| 65L | 1300 | 5 | | 0 | 5 | 5 | 0 | 5 | 5 | 0 | 5 | 5 | 0 | 5 | 5 | 0 | 5 | 5 | 0 | 5 | 5 | 0 | 4 | 5 | 0 | 5 | 5 | 0 | 5 | 5 | 0 | 5 | 498 |
| 70L | 1400 | 5 | | 0 | 5 | 5 | 0 | 5 | 5 | 0 | 5 | 5 | 0 | 5 | 5 | 0 | 5 | 5 | 0 | 5 | 5 | 0 | 5 | 5 | 0 | 5 | 5 | 0 | 5 | 5 | 0 | 5 | 541 |
| 80L | 1000 | 192AR BLX-II-6 | 5 | 0 | 5 | 5 | 0 | 5 | 5 | 0 | 5 | 5 | 0 | 5 | 5 | 0 | 5 | 5 | 0 | 5 | 5 | 0 | 5 | 5 | 0 | 5 | 5 | 0 | 5 | 5 | 0 | 5 | 508 |
| 90L | 1100 | | 5 | 0 | 5 | 5 | 0 | 5 | 5 | 0 | 5 | 5 | 0 | 5 | 5 | 0 | 5 | 5 | 0 | 5 | 5 | 0 | 5 | 5 | 0 | 5 | 5 | 0 | 5 | 5 | 0 | 5 | 653 |
| 100L | 1300 | | 5 | 0 | 5 | 5 | 0 | 5 | 5 | 0 | 5 | 5 | 0 | 5 | 5 | 0 | 5 | 5 | 0 | 5 | 5 | 0 | 5 | 5 | 0 | 5 | 5 | 0 | 5 | 5 | 0 | 5 | 743 |
| 110L | 1400 | | 5 | 0 | 5 | 5 | 0 | 5 | 5 | 0 | 5 | 5 | 0 | 5 | 5 | 0 | 5 | 5 | 0 | 5 | 5 | 0 | 5 | 5 | 0 | 5 | 5 | 0 | 5 | 5 | 0 | 5 | 793 |
| 120L | 1100 | 256AR BLX-II-8 | 5 | 0 | 5 | 5 | 0 | 5 | 5 | 0 | 5 | 5 | 0 | 5 | 5 | 0 | 5 | 5 | 0 | 5 | 5 | 0 | 5 | 5 | 0 | 5 | 5 | 0 | 5 | 5 | 0 | 5 | 861 |
| 130L | 1200 | | 5 | 0 | 5 | 5 | 0 | 5 | 5 | 0 | 5 | 5 | 0 | 5 | 5 | 0 | 5 | 5 | 0 | 5 | 5 | 0 | 5 | 5 | 0 | 5 | 5 | 0 | 5 | 5 | 0 | 5 | 905 |
| 145L | 1400 | | 5 | 0 | 5 | 5 | 0 | 5 | 5 | 0 | 5 | 5 | 0 | 5 | 5 | 0 | 5 | 5 | 0 | 5 | 5 | 0 | 5 | 5 | 0 | 5 | 5 | 0 | 5 | 5 | 0 | 5 | 1102 |

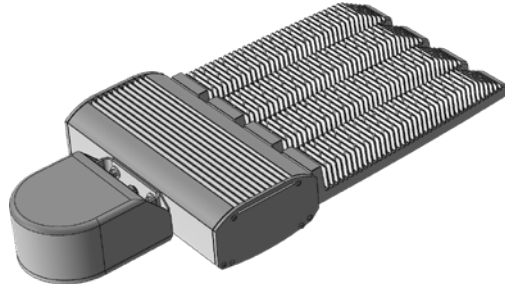
BLX-II ARRAY ROADWAY LED Specifications

BLX Features



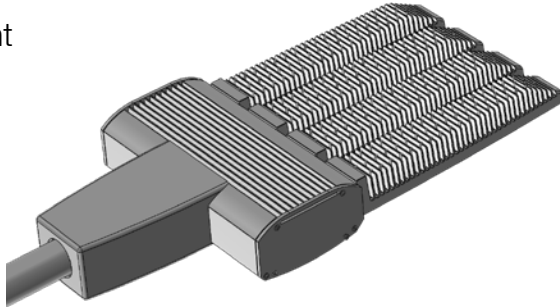
BLX-II Mounting Options

Post Top Mount



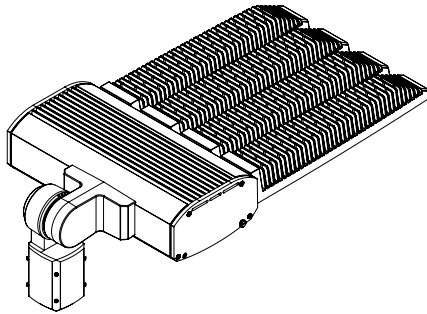
Post Top fits over a 2" - 2-3/8" tenon and is adjustable up to 45 degrees.

Mast Arm Mount



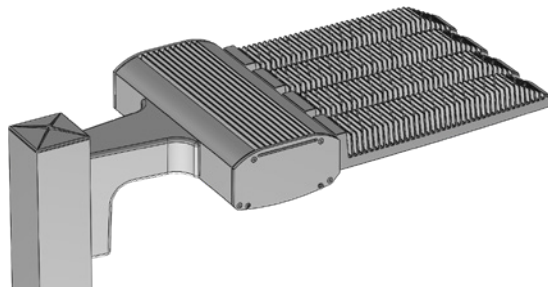
Mast Arm Fitter fits over a 2" - 2-3/8" tenon.

Knuckle Mount



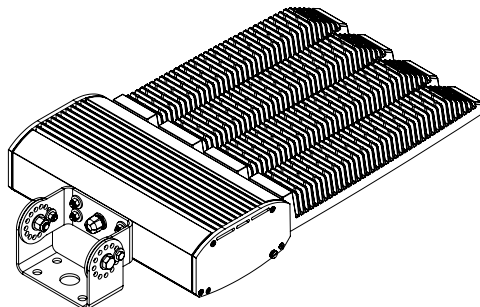
An adjustable knuckle slip fits over a 2-3/8" Tenon, and allows for up to 90 degrees of vertical adjustment in 10 degree increments from horizontal, as well as full side to side adjustment with the knuckle mount.

Arm Mount



The Bolt -On Arm (BOA) utilizes a 2 piece cleat system for easy installation. A Round Pole Plate Adaptor (RPP) is required for mounting to round poles.

Trunnion Mount



Trunnion Mount is adjustable up to 90 degrees.

BLX-II Roadway LED Specifications

BLX-II-4 Roadway Typical

General:

Roadway Standard: IES RP-8-14
R-Table: R3 (Slightly Specular), Q0=0.07 Actual Q0 Value: 0.07

Roadway Layout:

Layout Type: Two Rows, Opposite, With Median; 2R_OPP_w/M
Roadway Width: 40 ft
Median Width: 22 ft
Lanes In Direction Of Travel: 3
Driver's Side Of Roadway: Right

Luminaire Information:

BLX 4 T3 128LC 10 4K

Description: BLX-4-T3-128LC-10-4K-UNV
File Name: BLX_4_T3_128LC_10_4K.IES
Lumens Per Lamp: N.A.
Number Of Lamps: 1
Total Lamp Lumens: N.A.
Luminaire Lumens: 55520
Luminaire Watts: 434
Efficiency (%): N.A.
Total Light Loss Factor: 1.000
Luminaire Arrangement: SINGLE
Arm Length: 0.917 ft
Offset: 0 ft

Luminaire Location Summary:

Coordinates in ft

Spacing - Row 1: 313
Spacing - Row 2: 313

| <u>Label</u> | <u>X-Coord</u> | <u>Y-Coord</u> | <u>Z-Coord</u> | <u>Orient</u> | <u>Tilt</u> | <u>Spin</u> |
|----------------------|----------------|----------------|----------------|---------------|-------------|-------------|
| BLX_4_T3_128LC_10_4K | 939 | -12 | 50 | 90 | 0 | 0 |
| BLX_4_T3_128LC_10_4K | 626 | -12 | 50 | 90 | 0 | 0 |
| BLX_4_T3_128LC_10_4K | 313 | -12 | 50 | 90 | 0 | 0 |
| BLX_4_T3_128LC_10_4K | 0 | -12 | 50 | 90 | 0 | 0 |
| BLX_4_T3_128LC_10_4K | -313 | -12 | 50 | 90 | 0 | 0 |
| BLX_4_T3_128LC_10_4K | 939 | 114 | 50 | 270 | 0 | 0 |
| BLX_4_T3_128LC_10_4K | 626 | 114 | 50 | 270 | 0 | 0 |

Luminaire Location Summary:

Coordinates in ft

| | | | | | | |
|----------------------|------|-----|----|-----|---|---|
| BLX_4_T3_128LC_10_4K | 313 | 114 | 50 | 270 | 0 | 0 |
| BLX_4_T3_128LC_10_4K | 0 | 114 | 50 | 270 | 0 | 0 |
| BLX_4_T3_128LC_10_4K | -313 | 114 | 50 | 270 | 0 | 0 |

Total Number of locations: 10

RoadOpt_1_Luminance

| | | | | | | | | | | | | | | | | | | | | |
|---|------|------|------|------|------|------|------|------|------|------|------|------|------|------|------|------|------|------|------|------|
| → | 1.21 | 1.24 | 1.29 | 1.15 | 0.97 | 0.91 | 0.89 | 0.85 | 0.81 | 0.85 | 0.95 | 1.09 | 1.34 | 1.47 | 1.43 | 1.42 | 1.48 | 1.53 | 1.35 | 1.23 |
| → | 1.27 | 1.37 | 1.45 | 1.16 | 0.96 | 0.89 | 0.87 | 0.83 | 0.83 | 0.87 | 0.96 | 1.16 | 1.35 | 1.49 | 1.43 | 1.48 | 1.64 | 1.81 | 1.52 | 1.30 |
| → | 1.30 | 1.48 | 1.54 | 1.17 | 0.94 | 0.86 | 0.84 | 0.80 | 0.82 | 0.90 | 1.02 | 1.22 | 1.42 | 1.56 | 1.48 | 1.59 | 1.83 | 2.13 | 1.73 | 1.35 |
| → | 1.37 | 1.63 | 1.57 | 1.13 | 0.91 | 0.82 | 0.82 | 0.80 | 0.83 | 0.92 | 1.06 | 1.31 | 1.54 | 1.69 | 1.67 | 1.77 | 1.98 | 2.50 | 2.04 | 1.46 |
| → | 1.46 | 1.78 | 1.45 | 1.06 | 0.86 | 0.77 | 0.76 | 0.77 | 0.84 | 1.01 | 1.20 | 1.45 | 1.66 | 1.88 | 1.94 | 1.97 | 2.15 | 2.64 | 2.40 | 1.59 |
| → | 1.51 | 1.74 | 1.25 | 0.97 | 0.81 | 0.73 | 0.72 | 0.75 | 0.84 | 1.03 | 1.30 | 1.66 | 1.98 | 1.17 | 2.21 | 2.20 | 2.25 | 2.49 | 2.55 | 1.66 |

Luminance (Cd/SqM)

Average = 1.35
 Maximum = 2.64
 Minimum = 0.72
 Avg/Min Ratio = 1.88
 Max/Min Ratio = 3.67
 Max/Avg Ratio = 1.96

RoadOpt_1_Illum

| | | | | | | | | | | | | | | | | | | | | |
|---|------|------|------|------|------|------|------|------|------|------|------|------|------|------|------|------|------|------|------|------|
| → | 3.63 | 3.63 | 3.55 | 2.83 | 2.18 | 1.81 | 1.56 | 1.28 | 1.04 | 0.91 | 0.91 | 1.04 | 1.28 | 1.56 | 1.81 | 2.18 | 2.83 | 3.55 | 3.63 | 3.63 |
| → | 3.75 | 4.04 | 4.08 | 2.92 | 2.14 | 1.76 | 1.49 | 1.22 | 1.00 | 0.87 | 0.87 | 1.00 | 1.22 | 1.49 | 1.76 | 2.14 | 2.92 | 4.08 | 4.04 | 3.75 |
| → | 3.87 | 4.40 | 4.53 | 2.97 | 2.06 | 1.68 | 1.41 | 1.14 | 0.94 | 0.82 | 0.82 | 0.94 | 1.14 | 1.41 | 1.68 | 2.06 | 2.97 | 4.53 | 4.40 | 3.87 |
| → | 4.22 | 4.97 | 4.71 | 2.91 | 1.99 | 1.58 | 1.32 | 1.06 | 0.86 | 0.75 | 0.75 | 0.86 | 1.06 | 1.32 | 1.58 | 1.99 | 2.91 | 4.71 | 4.97 | 4.22 |
| → | 4.61 | 5.56 | 4.40 | 2.76 | 1.87 | 1.47 | 1.18 | 0.95 | 0.76 | 0.68 | 0.68 | 0.76 | 0.95 | 1.18 | 1.47 | 1.87 | 2.76 | 4.40 | 5.56 | 4.61 |
| → | 4.82 | 5.51 | 3.79 | 2.52 | 1.72 | 1.33 | 1.05 | 0.83 | 0.67 | 0.59 | 0.59 | 0.67 | 0.83 | 1.05 | 1.33 | 1.72 | 2.52 | 3.79 | 5.51 | 4.82 |

Illuminance (Fc)

Average = 2.35
 Maximum = 5.56
 Minimum = 0.59
 Avg/Min Ratio = 3.98
 Max/Min Ratio = 9.42
 Max/Avg Ratio = 2.37

RoadOpt_1_Vis_Level

| | | | | | | | | | | | | | | | | | | | | |
|---|------|------|------|------|------|------|------|------|------|------|------|------|------|------|------|------|------|------|------|------|
| → | 1.12 | 1.15 | 1.45 | 1.70 | 1.53 | 1.18 | 1.87 | 1.54 | 1.40 | 1.74 | 1.80 | 1.25 | 2.36 | 4.25 | 5.29 | 5.86 | 6.19 | 6.52 | 6.46 | 6.50 |
| → | 1.27 | 1.92 | 1.64 | 1.57 | 1.33 | 1.75 | 1.77 | 1.84 | 1.62 | 1.04 | 1.45 | 1.02 | 2.53 | 4.43 | 5.54 | 6.21 | 6.51 | 6.86 | 6.74 | 6.74 |
| → | 1.23 | 1.60 | 1.84 | 1.99 | 1.79 | 1.80 | 1.67 | 1.32 | 1.46 | 1.19 | 1.83 | 1.56 | 2.95 | 4.79 | 5.92 | 6.71 | 6.79 | 7.21 | 6.99 | 7.02 |
| → | 1.08 | 1.90 | 1.45 | 1.11 | 1.59 | 1.70 | 1.52 | 1.20 | 1.91 | 1.11 | 1.09 | 1.57 | 3.65 | 5.24 | 6.40 | 7.22 | 7.13 | 7.61 | 7.37 | 7.24 |
| → | 0.31 | 1.20 | 1.84 | 1.86 | 1.76 | 1.61 | 1.32 | 1.92 | 1.09 | 1.79 | 1.16 | 2.68 | 4.47 | 5.79 | 6.80 | 7.55 | 7.55 | 7.79 | 7.80 | 7.27 |
| → | 0.14 | 1.51 | 1.73 | 1.91 | 1.62 | 1.47 | 1.83 | 1.09 | 1.37 | 1.29 | 1.39 | 3.82 | 5.40 | 6.38 | 7.08 | 7.59 | 7.82 | 7.68 | 8.02 | 7.11 |

Visibility Level

STV = 5.890844

RoadOpt_1_Vis_Level_Bkgd_Lum

| | | | | | | | | | | | | | | | | | | | | |
|---|------|------|------|------|------|------|------|------|------|------|------|------|------|------|------|------|------|------|------|------|
| → | 1.25 | 1.05 | 0.94 | 0.90 | 0.88 | 0.83 | 0.82 | 0.89 | 1.00 | 1.21 | 1.44 | 1.47 | 1.41 | 1.44 | 1.52 | 1.47 | 1.27 | 1.20 | 1.21 | 1.28 |
| → | 1.32 | 1.05 | 0.91 | 0.87 | 0.86 | 0.82 | 0.83 | 0.91 | 1.04 | 1.25 | 1.45 | 1.47 | 1.43 | 1.53 | 1.73 | 1.73 | 1.39 | 1.26 | 1.30 | 1.43 |
| → | 1.35 | 1.04 | 0.89 | 0.84 | 0.83 | 0.80 | 0.84 | 0.96 | 1.10 | 1.30 | 1.52 | 1.48 | 1.51 | 1.67 | 2.00 | 2.11 | 1.46 | 1.30 | 1.33 | 1.66 |
| → | 1.34 | 1.00 | 0.86 | 0.82 | 0.80 | 0.81 | 0.86 | 1.00 | 1.17 | 1.41 | 1.63 | 1.68 | 1.66 | 1.83 | 2.25 | 2.53 | 1.65 | 1.39 | 1.44 | 1.78 |
| → | 1.23 | 0.95 | 0.81 | 0.77 | 0.76 | 0.79 | 0.90 | 1.12 | 1.31 | 1.54 | 1.78 | 1.93 | 1.94 | 2.01 | 2.35 | 2.74 | 1.97 | 1.48 | 1.59 | 1.68 |
| → | 1.10 | 0.87 | 0.76 | 0.72 | 0.73 | 0.77 | 0.92 | 1.17 | 1.47 | 1.81 | 2.09 | 2.20 | 2.19 | 2.21 | 2.35 | 2.49 | 2.24 | 1.49 | 1.75 | 1.44 |

Background Luminance (Cd/SqM)

Average = 1.35
 Maximum = 2.74
 Minimum = 0.72
 Avg/Min Ratio = 1.88
 Max/Min Ratio = 3.81
 Max/Avg Ratio = 2.03

BLX-II Roadway LED Specifications

RoadOpt_1_Vis_Level_Target_Lum

| | | | | | | | | | | | | | | | | | | | | |
|---|------|------|------|------|------|------|------|------|------|------|------|------|------|------|------|------|------|------|------|------|
| → | 1.02 | 1.98 | 1.82 | 1.35 | 1.26 | 1.29 | 1.23 | 1.70 | 1.80 | 1.87 | 1.02 | 1.36 | 1.88 | 1.55 | 1.36 | 1.24 | 1.16 | 1.10 | 1.08 | 1.06 |
| → | 1.05 | 1.31 | 1.54 | 1.53 | 1.15 | 1.12 | 1.99 | 1.45 | 1.66 | 1.73 | 1.93 | 1.31 | 1.85 | 1.54 | 1.35 | 1.24 | 1.16 | 1.11 | 1.08 | 1.06 |
| → | 1.09 | 1.60 | 1.15 | 1.61 | 1.96 | 1.88 | 1.73 | 1.17 | 1.44 | 1.56 | 1.83 | 1.23 | 1.82 | 1.52 | 1.34 | 1.24 | 1.16 | 1.11 | 1.08 | 1.06 |
| → | 1.18 | 1.07 | 1.40 | 1.50 | 1.79 | 1.60 | 1.41 | 1.85 | 1.11 | 1.37 | 1.69 | 1.14 | 1.76 | 1.50 | 1.33 | 1.23 | 1.15 | 1.11 | 1.08 | 1.06 |
| → | 1.29 | 1.55 | 1.97 | 1.23 | 1.51 | 1.29 | 1.95 | 1.44 | 1.75 | 1.12 | 1.54 | 1.04 | 1.69 | 1.47 | 1.31 | 1.22 | 1.15 | 1.10 | 1.08 | 1.06 |
| → | 1.35 | 1.50 | 1.15 | 1.76 | 1.16 | 1.86 | 1.49 | 1.99 | 1.39 | 1.83 | 1.36 | 1.93 | 1.62 | 1.43 | 1.30 | 1.21 | 1.14 | 1.10 | 1.08 | 1.06 |

Target Luminance (Cd/SqM)

Average = 2.23
 Maximum = 6.40
 Minimum = 0.06
 Avg/Min Ratio = 37.17
 Max/Min Ratio = 106.67
 Max/Avg Ratio = 2.87

RoadOpt_1_Veil_Lum

| | | | | | | | | | | | | | | | | | | | | |
|---|------|------|------|------|------|------|------|------|------|------|------|------|------|------|------|------|------|------|------|------|
| → | 0.02 | 0.03 | 0.04 | 0.06 | 0.07 | 0.11 | 0.15 | 0.19 | 0.24 | 0.28 | 0.29 | 0.26 | 0.20 | 0.15 | 0.11 | 0.06 | 0.03 | 0.01 | 0.02 | 0.02 |
| → | 0.02 | 0.03 | 0.04 | 0.06 | 0.07 | 0.11 | 0.15 | 0.20 | 0.25 | 0.28 | 0.29 | 0.26 | 0.21 | 0.16 | 0.13 | 0.08 | 0.03 | 0.01 | 0.02 | 0.02 |
| → | 0.03 | 0.03 | 0.04 | 0.06 | 0.07 | 0.11 | 0.15 | 0.20 | 0.25 | 0.28 | 0.30 | 0.27 | 0.22 | 0.17 | 0.15 | 0.10 | 0.03 | 0.01 | 0.02 | 0.02 |
| → | 0.03 | 0.03 | 0.04 | 0.06 | 0.07 | 0.10 | 0.15 | 0.20 | 0.25 | 0.28 | 0.30 | 0.28 | 0.23 | 0.18 | 0.16 | 0.12 | 0.04 | 0.01 | 0.02 | 0.02 |
| → | 0.03 | 0.03 | 0.04 | 0.05 | 0.07 | 0.10 | 0.14 | 0.19 | 0.24 | 0.28 | 0.30 | 0.28 | 0.24 | 0.19 | 0.17 | 0.13 | 0.04 | 0.01 | 0.02 | 0.02 |
| → | 0.03 | 0.03 | 0.04 | 0.05 | 0.06 | 0.09 | 0.13 | 0.17 | 0.22 | 0.26 | 0.28 | 0.28 | 0.24 | 0.20 | 0.17 | 0.12 | 0.05 | 0.01 | 0.02 | 0.02 |

Veiling Luminance (Cd/SqM)

Average = 0.12
 Maximum = 0.30
 Minimum = 0.01
 Avg/Min Ratio = 12
 Max/Min Ratio = 30
 Max/Avg Ratio = 2.5
 MaxLv Ratio = 0.22
 Threshold Increment (TI) = 15.34

Roadway Optimizer - Layout Comparison

| Layout 1 | |
|--|--------------------------|
| Description | |
| Roadway Standard | IES RP-8-14 |
| R-Table | R3 |
| Actual Q0 Value | 0.07 |
| Layout Type | 2R_OPP_w/M |
| Road Width | 40 |
| Median Width | 22 |
| Number Lanes | 3 |
| Number Lanes Opposite | 0 |
| Drivers Side | Right |
| Calc Area | Bottom |
| Label - Row 1 | BLX_4_T3_128LC_ 10_4K |
| MH - Row 1 | 50 |
| Setback - Row 1 | 12 |
| +Orient - Row 1 | 0 |
| Tilt - Row 1 | 0 |
| Spin - Row 1 | 0 |
| Spacing - Row 1 | 313 |
| Label - Row 2 | BLX_4_T3_128LC_ 10_4K |
| MH - Row 2 | 50 |
| Setback - Row 2 | 12 |
| +Orient - Row 2 | 0 |
| Tilt - Row 2 | 0 |
| Spin - Row 2 | 0 |
| Spacing - Row 2 | 313 |
| 1_Luminance (Cd/SqM) | |
| Average | 1.35 |
| Maximum | 2.64 |
| Minimum | 0.72 |
| Avg/Min Ratio | 1.88 |
| Max/Min Ratio | 3.67 |
| Max/Avg Ratio | 1.96 |
| 1_Illum (Fc) | |
| Average | 2.35 |
| Maximum | 5.56 |
| Minimum | 0.59 |
| Avg/Min Ratio | 3.98 |
| Max/Min Ratio | 9.42 |
| Max/Avg Ratio | 2.37 |
| 1_Vis_Level | |
| STV | 5.89 |
| 1_Vis_Level_Bkgd_Lum (Cd/SqM) | |
| Average | 1.35 |
| Maximum | 2.74 |
| Minimum | 0.72 |
| Avg/Min Ratio | 1.88 |
| Max/Min Ratio | 3.81 |
| Max/Avg Ratio | 2.03 |
| 1_Vis_Level_Target_Lum (Cd/SqM) | |
| Average | 2.23 |
| Maximum | 6.40 |
| Minimum | 0.06 |
| Avg/Min Ratio | 37.17 |
| Max/Min Ratio | 107 |
| Max/Avg Ratio | 2.87 |
| 1_Veil_Lum (Cd/SqM) | |
| Average | 0.12 |
| Maximum | 0.30 |
| Minimum | 0.01 |
| Avg/Min Ratio | 12.00 |
| Max/Min Ratio | 30.00 |
| Max/Avg Ratio | 2.5 |
| MaxLV Ratio | 0.22 |
| Threshold Incr. (TI) | 15.34 |

BLX-II Roadway LED Specifications

BLX-II-4 Roadway Typical

General:

Roadway Standard: IES RP-8-14
R-Table: R3 (Slightly Specular), Q0=0.07 Actual QO Value: 0.07

Roadway Layout:

Layout Type: Two Rows, Opposite, With Median; 2R_OPP_w/M
Roadway Width: 40 ft
Median Width: 22 ft
Lanes In Direction Of Travel: 3
Driver's Side Of Roadway: Right

Luminaire Information:

BLX 4 T3 128LC 10 4K

Description: BLX-4-T3-128LC-10-4K-UNV
File Name: BLX_4_T3_128LC_10_4K.IES
Lumens Per Lamp: N.A.
Number Of Lamps: 1
Total Lamp Lumens: N.A.
Luminaire Lumens: 55520
Luminaire Watts: 434
Efficiency (%): N.A.
Total Light Loss Factor: 1.000
Luminaire Arrangement: SINGLE
Arm Length: 12.917 ft
Offset: 0 ft

Luminaire Location Summary:

Coordinates in ft

Spacing - Row 1: 265
Spacing - Row 2: 265

| <u>Label</u> | <u>X-Coord</u> | <u>Y-Coord</u> | <u>Z-Coord</u> | <u>Orient</u> | <u>Tilt</u> | <u>Spin</u> |
|----------------------|----------------|----------------|----------------|---------------|-------------|-------------|
| BLX_4_T3_128LC_10_4K | -530 | -12 | 45 | 90 | 0 | 0 |
| BLX_4_T3_128LC_10_4K | -265 | -12 | 45 | 90 | 0 | 0 |
| BLX_4_T3_128LC_10_4K | 0 | -12 | 45 | 90 | 0 | 0 |
| BLX_4_T3_128LC_10_4K | 265 | -12 | 45 | 90 | 0 | 0 |
| BLX_4_T3_128LC_10_4K | 530 | -12 | 45 | 90 | 0 | 0 |
| BLX_4_T3_128LC_10_4K | 795 | -12 | 45 | 90 | 0 | 0 |
| BLX_4_T3_128LC_10_4K | 1060 | -12 | 45 | 90 | 0 | 0 |

Luminaire Location Summary:

Coordinates in ft

| | | | | | | |
|----------------------|------|-----|----|-----|---|---|
| BLX_4_T3_128LC_10_4K | -530 | 114 | 45 | 270 | 0 | 0 |
| BLX_4_T3_128LC_10_4K | -265 | 114 | 45 | 270 | 0 | 0 |
| BLX_4_T3_128LC_10_4K | 0 | 114 | 45 | 270 | 0 | 0 |
| BLX_4_T3_128LC_10_4K | 265 | 114 | 45 | 270 | 0 | 0 |
| BLX_4_T3_128LC_10_4K | 530 | 114 | 45 | 270 | 0 | 0 |
| BLX_4_T3_128LC_10_4K | 795 | 114 | 45 | 270 | 0 | 0 |
| BLX_4_T3_128LC_10_4K | 1060 | 114 | 45 | 270 | 0 | 0 |

Total Number of locations: 14

RoadOpt_1_Luminance

| | | | | | | | | | | | | | | | | | |
|---|------|------|------|------|------|------|------|------|------|------|------|------|------|------|------|------|------|
| → | 1.71 | 1.89 | 1.87 | 1.45 | 1.24 | 1.27 | 1.30 | 1.32 | 1.46 | 1.70 | 2.00 | 2.08 | 1.98 | 2.15 | 2.46 | 2.19 | 1.76 |
| → | 1.79 | 2.16 | 1.94 | 1.43 | 1.25 | 1.25 | 1.28 | 1.36 | 1.52 | 1.79 | 2.12 | 2.17 | 2.12 | 2.35 | 2.87 | 2.62 | 1.87 |
| → | 1.91 | 2.34 | 1.86 | 1.39 | 1.23 | 1.23 | 1.30 | 1.43 | 1.59 | 1.92 | 2.28 | 2.39 | 2.40 | 2.59 | 3.19 | 3.08 | 2.06 |
| → | 2.01 | 2.32 | 1.70 | 1.31 | 1.17 | 1.16 | 1.27 | 1.50 | 1.80 | 2.21 | 2.53 | 2.68 | 2.73 | 2.80 | 3.23 | 3.39 | 2.20 |
| → | 1.98 | 1.92 | 1.47 | 1.22 | 1.12 | 1.16 | 1.28 | 1.56 | 1.93 | 2.43 | 2.89 | 3.13 | 3.05 | 3.12 | 3.08 | 2.95 | 2.23 |
| → | 1.57 | 1.45 | 1.28 | 1.09 | 1.01 | 1.04 | 1.19 | 1.49 | 1.88 | 2.37 | 2.83 | 3.13 | 3.12 | 3.11 | 2.91 | 2.28 | 1.96 |

Luminance (Cd/SqM)

Average = 1.98
 Maximum = 3.39
 Minimum = 1.01
 Avg/Min Ratio = 1.96
 Max/Min Ratio = 3.36
 Max/Avg Ratio = 1.71

RoadOpt_1_Illum

| | | | | | | | | | | | | | | | | | |
|---|------|------|------|------|------|------|------|------|------|------|------|------|------|------|------|------|------|
| → | 5.12 | 5.61 | 5.11 | 3.46 | 2.58 | 2.19 | 1.83 | 1.52 | 1.43 | 1.52 | 1.83 | 2.19 | 2.58 | 3.46 | 5.11 | 5.61 | 5.12 |
| → | 5.37 | 6.40 | 5.46 | 3.41 | 2.50 | 2.08 | 1.74 | 1.44 | 1.33 | 1.44 | 1.74 | 2.08 | 2.50 | 3.41 | 5.46 | 6.40 | 5.37 |
| → | 5.89 | 7.12 | 5.41 | 3.30 | 2.38 | 1.95 | 1.58 | 1.33 | 1.22 | 1.33 | 1.58 | 1.95 | 2.38 | 3.30 | 5.41 | 7.12 | 5.89 |
| → | 6.28 | 7.18 | 4.89 | 3.08 | 2.21 | 1.77 | 1.41 | 1.19 | 1.11 | 1.19 | 1.41 | 1.77 | 2.21 | 3.08 | 4.89 | 7.18 | 6.28 |
| → | 6.23 | 5.92 | 4.12 | 2.79 | 1.99 | 1.56 | 1.23 | 1.02 | 0.95 | 1.02 | 1.23 | 1.56 | 1.99 | 2.79 | 4.12 | 5.92 | 6.23 |
| → | 4.95 | 4.35 | 3.50 | 2.43 | 1.71 | 1.30 | 1.01 | 0.85 | 0.79 | 0.85 | 1.01 | 1.30 | 1.71 | 2.43 | 3.50 | 4.35 | 4.95 |

Illuminance (Fc)

Average = 3.16
 Maximum = 7.18
 Minimum = 0.79
 Avg/Min Ratio = 4
 Max/Min Ratio = 9.09
 Max/Avg Ratio = 2.27

RoadOpt_1_Vis_Level

| | | | | | | | | | | | | | | | | | |
|---|------|-------|------|------|------|------|------|------|------|------|------|------|------|------|------|------|------|
| → | 0.34 | 1.16 | 1.79 | 2.07 | 1.99 | 1.87 | 1.57 | 1.02 | 0.31 | 1.49 | 1.66 | 4.27 | 5.77 | 6.24 | 6.93 | 7.21 | 7.44 |
| → | 0.24 | 2.39 | 1.14 | 2.08 | 1.97 | 1.77 | 1.43 | 0.91 | 0.20 | 0.95 | 2.38 | 4.79 | 6.36 | 6.62 | 7.31 | 7.58 | 7.72 |
| → | 0.24 | 1.79 | 1.51 | 1.69 | 1.75 | 1.95 | 1.28 | 0.37 | 2.94 | 0.02 | 3.27 | 5.38 | 7.00 | 7.08 | 7.63 | 7.97 | 7.85 |
| → | 0.61 | 4.28 | 0.28 | 1.89 | 1.62 | 1.75 | 0.55 | 0.17 | 0.51 | 1.70 | 4.31 | 5.99 | 7.25 | 7.63 | 7.70 | 8.35 | 7.66 |
| → | 0.89 | 12.57 | 1.72 | 1.77 | 1.42 | 1.18 | 0.10 | 2.96 | 0.16 | 3.19 | 5.37 | 6.72 | 7.26 | 7.83 | 7.53 | 8.05 | 7.42 |
| → | 0.63 | 10.16 | 1.59 | 1.58 | 1.27 | 1.16 | 0.27 | 1.64 | 1.45 | 3.99 | 5.82 | 6.96 | 7.24 | 7.52 | 7.18 | 7.24 | 6.86 |

Visibility Level

STV = 5.84945

RoadOpt_1_Vis_Level_Bkgd_Lum

| | | | | | | | | | | | | | | | | | |
|---|------|------|------|------|------|------|------|------|------|------|------|------|------|------|------|------|------|
| → | 1.65 | 1.31 | 1.26 | 1.28 | 1.30 | 1.39 | 1.57 | 1.85 | 2.05 | 2.04 | 2.02 | 2.31 | 2.49 | 1.89 | 1.69 | 1.75 | 2.01 |
| → | 1.67 | 1.31 | 1.24 | 1.27 | 1.29 | 1.45 | 1.66 | 1.91 | 2.19 | 2.11 | 2.23 | 2.59 | 2.98 | 2.10 | 1.80 | 1.87 | 2.25 |
| → | 1.59 | 1.28 | 1.21 | 1.27 | 1.33 | 1.53 | 1.74 | 2.06 | 2.41 | 2.36 | 2.49 | 2.80 | 3.49 | 2.42 | 1.92 | 2.05 | 2.27 |
| → | 1.49 | 1.22 | 1.14 | 1.21 | 1.35 | 1.65 | 2.01 | 2.36 | 2.64 | 2.71 | 2.76 | 2.98 | 3.41 | 2.96 | 1.99 | 2.34 | 1.94 |
| → | 1.34 | 1.15 | 1.12 | 1.20 | 1.40 | 1.74 | 2.17 | 2.68 | 3.05 | 3.11 | 3.06 | 3.15 | 2.97 | 2.90 | 1.85 | 2.20 | 1.61 |
| → | 1.18 | 1.02 | 1.01 | 1.09 | 1.31 | 1.67 | 2.11 | 2.61 | 3.01 | 3.15 | 3.11 | 3.09 | 2.60 | 2.29 | 1.46 | 1.67 | 1.35 |

Background Luminance (Cd/SqM)

Average = 1.99
 Maximum = 3.49
 Minimum = 1.01
 Avg/Min Ratio = 1.97
 Max/Min Ratio = 3.46
 Max/Avg Ratio = 1.75

BLX-II Roadway LED Specifications

RoadOpt_1_Vis_Level_Target_Lum

| | | | | | | | | | | | | | | | | | |
|---|------|------|------|------|------|------|------|------|------|------|------|------|------|------|------|------|------|
| → | 1.60 | 5.09 | 7.68 | 7.20 | 6.81 | 6.78 | 6.21 | 4.95 | 3.65 | 2.44 | 1.55 | 0.95 | 0.56 | 0.35 | 0.23 | 0.14 | 0.09 |
| → | 1.68 | 5.80 | 8.19 | 7.11 | 6.58 | 6.46 | 5.89 | 4.68 | 3.40 | 2.32 | 1.48 | 0.91 | 0.54 | 0.35 | 0.23 | 0.14 | 0.09 |
| → | 1.83 | 6.45 | 8.12 | 6.88 | 6.27 | 6.05 | 5.34 | 4.31 | 3.13 | 2.14 | 1.38 | 0.86 | 0.52 | 0.33 | 0.22 | 0.14 | 0.09 |
| → | 1.95 | 6.51 | 7.34 | 6.41 | 5.83 | 5.47 | 4.76 | 3.82 | 2.83 | 1.94 | 1.25 | 0.79 | 0.50 | 0.32 | 0.21 | 0.14 | 0.10 |
| → | 1.94 | 5.37 | 6.19 | 5.82 | 5.22 | 4.83 | 4.11 | 3.26 | 2.44 | 1.73 | 1.12 | 0.72 | 0.47 | 0.31 | 0.21 | 0.14 | 0.10 |
| → | 1.55 | 3.96 | 5.26 | 5.06 | 4.48 | 3.99 | 3.37 | 2.66 | 2.02 | 1.48 | 0.98 | 0.65 | 0.43 | 0.30 | 0.20 | 0.14 | 0.10 |

Target Luminance (Cd/SqM)

Average = 2.91
 Maximum = 8.19
 Minimum = 0.09
 Avg/Min Ratio = 32.33
 Max/Min Ratio = 91
 Max/Avg Ratio = 2.81

RoadOpt_1_Veil_Lum

| | | | | | | | | | | | | | | | | | |
|---|------|------|------|------|------|------|------|------|------|------|------|------|------|------|------|------|------|
| → | 0.02 | 0.03 | 0.03 | 0.04 | 0.06 | 0.09 | 0.13 | 0.19 | 0.26 | 0.34 | 0.40 | 0.41 | 0.35 | 0.26 | 0.20 | 0.14 | 0.06 |
| → | 0.02 | 0.03 | 0.03 | 0.05 | 0.06 | 0.09 | 0.13 | 0.19 | 0.26 | 0.35 | 0.40 | 0.41 | 0.36 | 0.27 | 0.22 | 0.17 | 0.06 |
| → | 0.02 | 0.03 | 0.03 | 0.04 | 0.06 | 0.08 | 0.12 | 0.18 | 0.25 | 0.34 | 0.40 | 0.41 | 0.37 | 0.28 | 0.23 | 0.19 | 0.07 |
| → | 0.02 | 0.03 | 0.03 | 0.04 | 0.06 | 0.08 | 0.11 | 0.17 | 0.24 | 0.32 | 0.37 | 0.40 | 0.36 | 0.29 | 0.24 | 0.19 | 0.08 |
| → | 0.02 | 0.03 | 0.03 | 0.04 | 0.06 | 0.07 | 0.10 | 0.15 | 0.21 | 0.28 | 0.33 | 0.36 | 0.34 | 0.28 | 0.23 | 0.16 | 0.09 |
| → | 0.02 | 0.03 | 0.03 | 0.04 | 0.05 | 0.06 | 0.09 | 0.12 | 0.17 | 0.23 | 0.27 | 0.30 | 0.30 | 0.26 | 0.21 | 0.14 | 0.07 |

Veiling Luminance (Cd/SqM)

Average = 0.17
 Maximum = 0.41
 Minimum = 0.02
 Avg/Min Ratio = 8.5
 Max/Min Ratio = 20.5
 Max/Avg Ratio = 2.41
 MaxLv Ratio = 0.21
 Threshold Increment (TI) = 15.43

Roadway Optimizer - Layout Comparison

| Layout 1 | |
|--|--------------------------|
| Description | |
| Roadway Standard | IES RP-8-14 |
| R-Table | R3 |
| Actual Q0 Value | 0.07 |
| <hr/> | |
| Layout Type | 2R_OPP_w/M |
| Road Width | 40 |
| Median Width | 22 |
| Number Lanes | 3 |
| Number Lanes Opposite | 0 |
| Drivers Side | Right |
| Calc Area | Bottom |
| <hr/> | |
| Label - Row 1 | BLX_4_T3_128LC_ 10_4K |
| MH - Row 1 | 45 |
| Setback - Row 1 | 12 |
| +-Orient - Row 1 | 0 |
| Tilt - Row 1 | 0 |
| Spin - Row 1 | 0 |
| Spacing - Row 1 | 265 |
| <hr/> | |
| Label - Row 2 | BLX_4_T3_128LC_ 10_4K |
| MH - Row 2 | 45 |
| Setback - Row 2 | 12 |
| +-Orient - Row 2 | 0 |
| Tilt - Row 2 | 0 |
| Spin - Row 2 | 0 |
| Spacing - Row 2 | 265 |
| <hr/> | |
| 1 Luminance (Cd/SqM) | |
| Average | 1.98 |
| Maximum | 3.39 |
| Minimum | 1.01 |
| Avg/Min Ratio | 1.96 |
| Max/Min Ratio | 3.36 |
| <hr/> | |
| Max/Avg Ratio | 1.71 |
| <hr/> | |
| 1 Illum (Fc) | |
| Average | 3.16 |
| Maximum | 7.18 |
| Minimum | 0.79 |
| Avg/Min Ratio | 4.00 |
| Max/Min Ratio | 9.09 |
| Max/Avg Ratio | 2.27 |
| <hr/> | |
| 1 Vis_Level | |
| STV | 5.85 |
| <hr/> | |
| 1 Vis_Level_Bkgd_Lum (Cd/SqM) | |
| Average | 1.99 |
| Maximum | 3.49 |
| Minimum | 1.01 |
| Avg/Min Ratio | 1.97 |
| Max/Min Ratio | 3.46 |
| Max/Avg Ratio | 1.75 |
| <hr/> | |
| 1 Vis_Level_Target_Lum (Cd/SqM) | |
| Average | 2.91 |
| Maximum | 8.19 |
| Minimum | 0.09 |
| Avg/Min Ratio | 32.33 |
| Max/Min Ratio | 91.00 |
| Max/Avg Ratio | 2.81 |
| <hr/> | |
| 1 Veil_Lum (Cd/SqM) | |
| Average | 0.17 |
| Maximum | 0.41 |
| Minimum | 0.02 |
| Avg/Min Ratio | 8.50 |
| Max/Min Ratio | 20.50 |
| Max/Avg Ratio | 2.41 |
| MaxLV Ratio | 0.21 |
| <hr/> | |
| Threshold Incr. (TI) | 15.43 |