

BOW LX-II KMTA Installation Instructions



BEFORE YOU BEGIN

- Read these instructions completely and carefully.
- Save these instructions for future use.

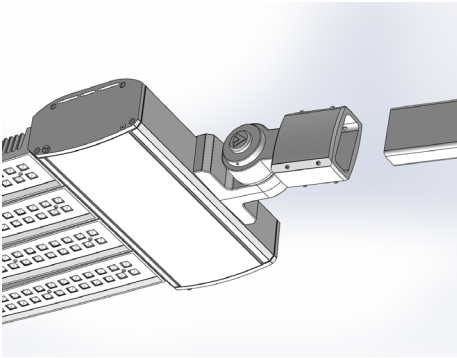


WARNING

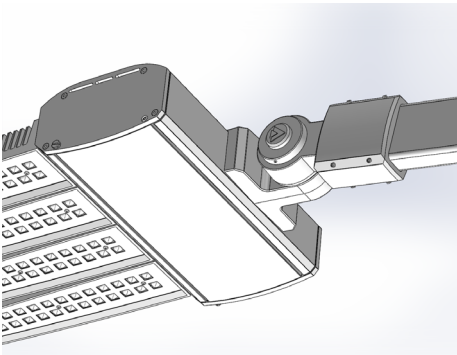
- to avoid possible risk of fire or shock, turn off power prior to installation or maintenance preferably at circuit breaker. Product must be installed following all NEC and local electrical codes.

UNPACKING

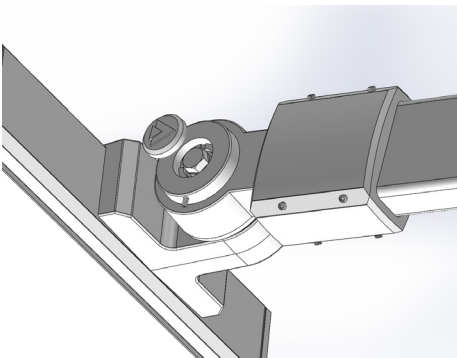
- This luminaire has been properly packaged so that no damage shall occur during transportaion. Inspect and confirm.



1. Connect supply lead wires per NEC and/or any applicable local codes.
2. Slide TA Knuckle Mount Fitter onto 1-1/2" x 3-1/2" the Rectangular Mounting Arm.



3. Tighten (8) 1/4"-20 x 3/4" Set Screws to 6 ft-lb.
4. Loosen (do not remove) the #8-32 Set Screw and remove the Knuckle Cover.
5. If necessary, loosen 1/2" Hex Head Bolt then tilt the luminaire in the desired position. Each tooth allows for 10 degrees of inclination.




6. Tighten 1/2" Hex Head Bolt to 47 ft-lb.
7. Replace the Knuckle Cover and tighten the #8-32 Set Screw to 16 in-lb.



19645 ranch Way.
Rancho Dominguez CA 90220
310-512-6480
www.visionairelighting.com

Conforms to
UL STD 1598
Certified To
CAN/US STD C22.2#250#250.0



LISTED