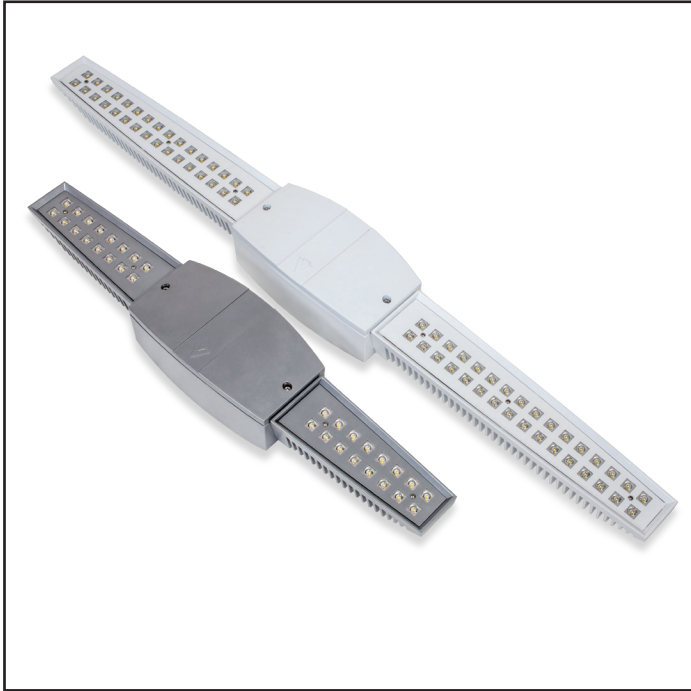


BOW LED Specifications



Project Name:

Catalog Number:

Type:

The **Bow LED** luminaire from Visionaire, simplifies the task of selecting the best solution for LED parking garage lighting. The linear design of the luminaire, compliments the linear design of the pre-cast concrete coffers; creating an integrated lighting effect; and maximizes the perceived lighting coverage. It is an ideal replacement for the high-maintenance fluorescent fixtures of yesterday.

The LED light engines are die-cast aluminum with external heat radiating fins for maximum heat dissipation; and is available in two sizes with either 32 or 64 LEDs. The separate cast aluminum driver compartment allows the driver to operate cooler for long life. Available for pendant mounting, wall mounting or choose the shallow speed mount bracket.

Six optical distribution patterns are available. Choose between 3000, 4000 or 5000 Kelvin temperature of the LEDs.

A durable polyester powder coat finish is guaranteed for five years; and is available in standard or custom colors.

The **Bow LED** series is an exceptional choice for parking garage lighting and other ceiling mount applications.

Ordering Information

MODEL	OPTICS	SOURCE	CURRENT	KELVIN	VOLTAGE	MOUNTING	FINISH	OPTIONS	OPTIONS
BOW-1	T1 Type 1	32LC	3 350mA	3K 3000K	UNV 120-277V	SMB Speed Mount Bracket Ceiling Mount	BZ Bronze	WSC-8 Motion Sensor 8' Mounting Height	EBPL Emergency Battery Pack
BOW-2	T2 Type 2	64LC	5 530mA	4K 4000K	8 347V	PM12 Pendant Mount 12" *30" Leads	BK Black	WSC-20 Motion Sensor 9-20' Mounting Height	BD Bird Deterrent Pendant Mount Only
	T3 Type 3		7 700mA	5K 5000K	5 480V	PM24 Pendant Mount 24" *42" Leads	SBK Smooth Black	WSC-40 Motion Sensor 21-40' Mounting Height	LDL Lightly Diffused Lens
	T4 Type 4		10 1050mA *Not available in 64LC			PM36 Pendant Mount 36" *54" Leads	WH White	*WSC options will require (1) FSIR 100 remote for programming	DIM 0-10v Dimming Driver
	T5 Type 5					PM36 Pendant Mount 36" *54" Leads	SWH Smooth White		VWC Visionaire Wireless Controls * Consult Factory
	T5W Type 5 Wide					WM Wall Mount	GP Graphite	MS-8 Motion Sensor On/Off 8' Mounting Height	
	T5WR Type 5 Wide Round					UPL12 Up Light Mount 12"	GY Grey		
						UPL24 Up Light Mount 24"	SL Silver Metallic		
						UPL36 Up Light Mount 36"	CC Custom Color	MS-20 Motion Sensor On/Off 9-20' Mounting Height	
						Up Light Pendant Mount for indoor applications only.		MS-40 Motion Sensor On/Off 21-40' Mounting Height	

Features & Specifications

BOW

Housing

The separate driver housing is constructed of cast aluminum with a cast aluminum cover with captive fasteners; for easy access to the LED driver; allowing for cooler operation and longer life.

Silicone gasketing is utilized throughout the fixture for weather tight operation.

Thermal Management

The BOW Series provides excellent overall thermal management by maximizing the fixture's dual heat sink capabilities. This enables the Bow Series to withstand higher ambient temperatures and drive currents without degrading LED life. The BOW Series has a low thermal resistance rating. The heat radiating fins create superior thermal dissipation.

The L70 test determines the point in an LEDs life when it reaches 70 percent of its initial output. The BOW Series LEDs have been determined to last a minimum of 100,000 hours in 25 °C environments when driven at 350 mA.

Optical System

The highest lumen output LEDs are utilized in the BOW Series. IES distribution Types I, II, III, IV and V are available. LED light assemblies come in multiples of 16 or 32 LEDs.

CRI values are 70.

Quali-Guard® Finish

A Quali-Guard® thermoset polyester powder coat painted finish is available in standard and custom colors.

Mounting

A galvanized steel ceiling mount bracket can be secured directly to a recessed junction box, or to the ceiling for surface mounting of the fixture. Mounting studs extend from the bracket for easy mounting of the housing to the ceiling mount bracket.

A cast aluminum mounting hub is supplied with a 3/8" NPT for pendant mount applications.

Electrical Assembly

The BOW Series is supplied with a choice of 350, 530, 700 or 1050mA high-performance LED drivers that accept 120v thru 480v, 50 Hz to 60 Hz, input. Power factor of 90%. Rated for -40°C to +55°C operations.

- Power factor of 90%.
- THD less than or equal to 20%
- 10 kV surge protector supplied as standard.

Warranty

Five (5) year Limited Warranty on entire system, including finish. For full warranty information, please visit visionairelighting.com.

Options

- 0-10v Dimming Driver
- Watt Stopper FSP-211
- Motion Sensor
- Visionaire Wireless Control
 - Enables high end trim
 - Based on Zigbee wireless communication protocol
- Emergency Battery Pack
- Bird Deterrent
- Lightly Diffused Lens

Listings

- ETL Listed
- LM79 and LM80
- RoHS compliant
- IP-66 listed
- DLC listed
- Powder Coated Tough™

Patent No. USD688403S

DesignLights Consortium (DLC) qualified Product. Some configurations of this product family may not be DesignLights Consortium (DLC) listed, please refer to the DLC qualified products list to confirm listed configurations. <http://www.designlights.org/>
3000K must be selected for IDA certification.

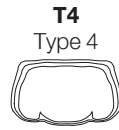
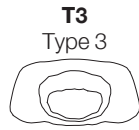
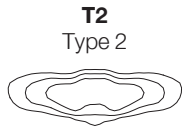
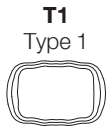


Rated
IP66



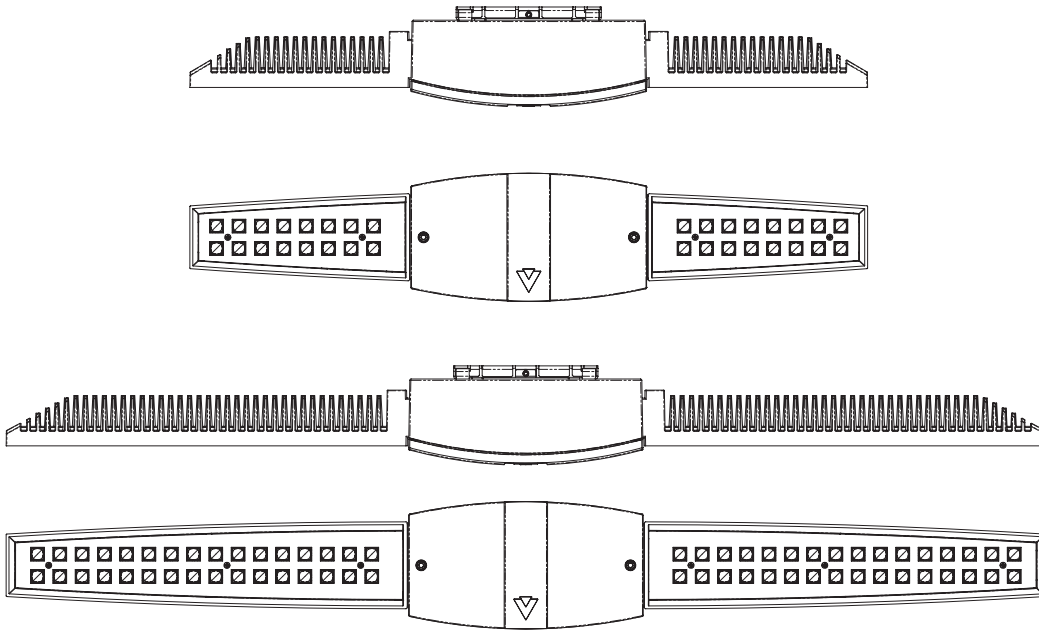
BOW LED Specifications

Photometric Optical Summary

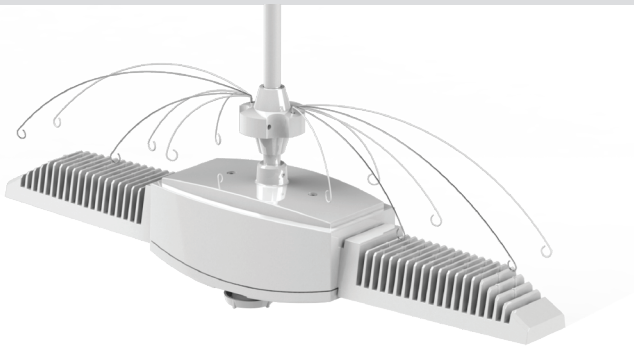


Dimensions

Width:	BOW-1 5.5"	Width:	BOW-2 5.5"
Height:	BOW-1 4.5"	Height:	BOW-2 4.5"
Depth:	BOW-1 30"	Depth:	BOW-2 46.5"
Weight:	BOW-1 18 LBS	Weight:	BOW-2 22 LBS



Bird Deterrent

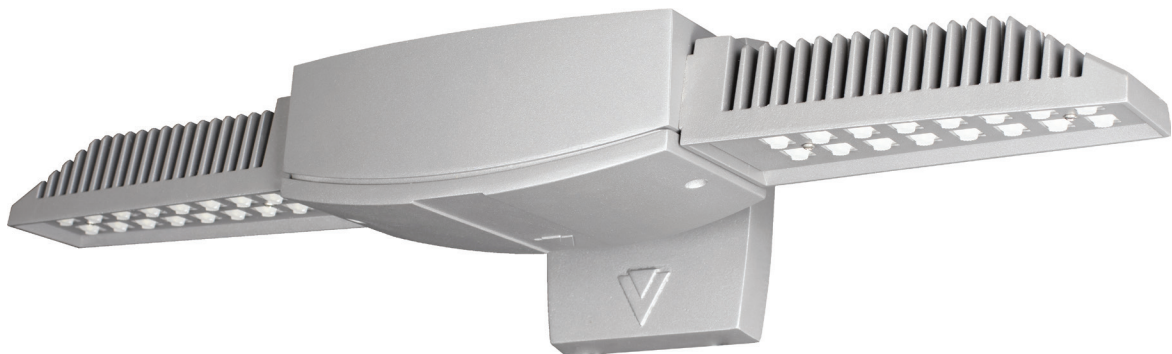


Up Light Mount



LED Specifications **BOW**

BOW 3K Lumen Data								
# LEDs	mA	Type 1	Type 2	Type 3	Type 4	Type 5	Type 5W	Watts
32	350	4524	4275	4282	4095	4498	4364	35
	530	6556	6195	6206	5934	6518	6325	57
	700	8343	7883	7897	7552	8295	8049	74
	1000	11450	10820	10840	10365	11385	11047	109
64	350	9102	8601	8616	8239	9050	8781	74
	530	13169	12444	12466	11921	13094	12705	108
	700	16455	15550	15577	14895	16361	15876	142
BOW 4K Lumen Data								
# LEDs	mA	Type 1	Type 2	Type 3	Type 4	Type 5	Type 5W	Watts
32	350	4885	4616	4624	4422	4857	4713	35
	530	6907	6527	6538	6252	6867	6663	57
	700	8789	8306	8320	7956	8739	8480	74
	1000	12064	11400	11420	10920	11995	11639	109
64	350	9589	9061	9077	8680	9534	9251	74
	530	13874	13111	13134	12559	13795	13385	108
	700	17336	16382	16411	15693	17238	16726	142
BOW 5K Lumen Data								
# LEDs	mA	Type 1	Type 2	Type 3	Type 4	Type 5	Type 5W	Watts
32	350	4570	4318	4326	4136	4543	4409	35
	530	6622	6258	6269	5994	6584	6389	57
	700	8427	7963	7977	7628	8379	8130	74
	1000	11566	10930	10949	10470	11500	11159	109
64	350	9194	8688	8703	8322	9141	8870	74
	530	13302	12570	12592	12041	13226	12833	108
	700	16622	15707	15735	15046	16527	16036	142

Wall Mount

BOW LED Specifications

BOW 3K Lumen Per Watt Data								
# LEDs	mA	Type 1	Type 2	Type 3	Type 4	Type 5	Type 5W	Watts
32	350	129	122	122	117	129	125	35
	530	115	108	109	104	114	111	57
	700	112	106	106	102	111	108	74
	1000	105	99	99	95	104	101	109
64	350	124	117	117	112	123	119	74
	530	122	115	115	110	121	117	108
	700	116	110	110	105	115	112	142
BOW 4K Lumen Per Watt Data								
# LEDs	mA	Type 1	Type 2	Type 3	Type 4	Type 5	Type 5W	Watts
32	350	140	132	132	126	139	135	35
	530	121	114	115	109	120	117	57
	700	118	112	112	107	117	114	74
	1000	111	105	105	100	110	107	109
64	350	130	123	123	118	130	126	74
	530	128	121	121	116	127	124	108
	700	122	116	116	111	122	118	142
BOW 5K Lumen Per Watt Data								
# LEDs	mA	Type 1	Type 2	Type 3	Type 4	Type 5	Type 5W	Watts
32	350	131	123	124	118	130	126	35
	530	116	110	110	105	115	112	57
	700	113	107	107	103	113	109	74
	1000	106	100	100	96	106	102	109
64	350	125	118	118	113	124	121	74
	530	123	116	116	111	122	119	108
	700	117	111	111	106	117	113	142

BOW 3K BUG Data																				
# LEDs	mA	Type 1			Type 2			Type 3			Type 4			Type 5			Type 5W			Watts
		B	U	G	B	U	G	B	U	G	B	U	G	B	U	G	B	U	G	
32	350	2	0	2	1	0	2	1	0	1	1	0	1	2	0	1	3	0	1	35
	530	2	0	2	2	0	2	1	0	1	1	0	2	3	0	1	3	0	1	57
	700	3	0	3	2	0	2	1	0	2	2	0	2	3	0	1	3	0	2	74
	1000	3	0	3	2	0	3	2	0	2	2	0	2	3	0	2	4	0	2	109
64	350	3	0	3	2	0	2	1	0	2	2	0	2	3	0	1	3	0	2	74
	530	3	0	3	3	0	3	2	0	2	2	0	2	3	0	2	4	0	2	108
	700	3	0	3	3	0	3	2	0	2	3	0	2	4	0	2	4	0	2	142
BOW 4K BUG Data																				
# LEDs	mA	Type 1			Type 2			Type 3			Type 4			Type 5			Type 5W			Watts
		B	U	G	B	U	G	B	U	G	B	U	G	B	U	G	B	U	G	
32	350	2	0	2	1	0	2	1	0	1	1	0	1	2	0	1	3	0	1	35
	530	3	0	3	2	0	2	1	0	1	1	0	2	3	0	1	3	0	1	57
	700	3	0	3	2	0	2	1	0	2	2	0	2	3	0	1	3	0	2	74
	1000	3	0	3	3	0	3	2	0	2	2	0	2	3	0	2	4	0	2	109
64	350	3	0	3	2	0	3	1	0	2	2	0	2	3	0	1	3	0	2	74
	530	3	0	3	3	0	3	2	0	2	2	0	2	3	0	2	4	0	2	108
	700	4	0	4	3	0	3	2	0	2	3	0	3	4	0	2	4	0	2	142
BOW 5K BUG Data																				
# LEDs	mA	Type 1			Type 2			Type 3			Type 4			Type 5			Type 5W			Watts
		B	U	G	B	U	G	B	U	G	B	U	G	B	U	G	B	U	G	
32	350	2	0	2	1	0	2	1	0	1	1	0	1	2	0	1	3	0	1	35
	530	2	0	2	2	0	2	1	0	1	1	0	2	3	0	1	3	0	1	57
	700	3	0	3	2	0	2	1	0	2	2	0	2	3	0	1	3	0	2	74
	1000	3	0	3	2	0	3	2	0	2	2	0	2	3	0	2	4	0	2	109
64	350	3	0	3	2	0	2	1	0	2	2	0	2	3	0	1	3	0	2	74
	530	3	0	3	3	0	3	2	0	2	2	0	2	3	0	2	4	0	2	108
	700	3	0	3	3	0	3	2	0	2	3	0	2	4	0	2	4	0	2	142