

# BOW - Pendant Mount Installation Instructions

## SPECIFICATIONS

- Dimensions:
- BOW-1 W5.5" L 29.5" H 6" 16 Lbs
- BOW-2 W5.5" L 46.5" H 6" 22 Lbs



## BEFORE YOU BEGIN

- Read these instructions completely and carefully.
- Save these instructions for future use.

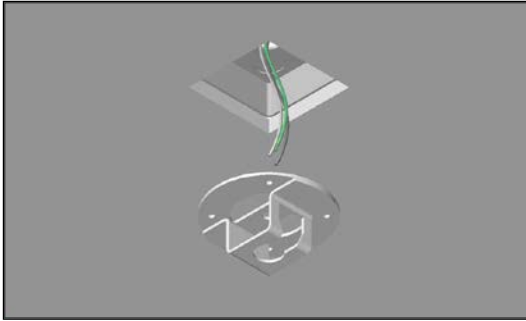


Fig. 1



## WARNING

- To avoid possible risk of fire or shock turn power off prior to installation or maintenance Preferably at circuit breaker. Product must be installed per all NEC and/or local Electrical Codes.

## UNPACKING

- This luminaire has been properly packaged so that no damage shall occur during transportation. Inspect and confirm.

## NOTE

- Integrity of luminaire mounting to surface is not responsibility of Visionaire Lighting

## INSTALLATION

- Attach pendant bracket to J-box already installed by others (see fig 1)
- Slip luminaire electrical leads thru pendant rod and firmly thread pendant rod to luminaire (see fig 2)
- Slip canopy over pendant rod (see fig 3)
- Attach swivel to pendant rod (see fig 4)
- Raise Luminaire with pendant to pendant bracket and drop swivel into pendant bracket. (See fig 5)
- Verify wattage against label installed on luminaire and make electrical connections per NEC and/or any applicable local codes.
- Raise and Lock canopy to pendant bracket (see fig 6)

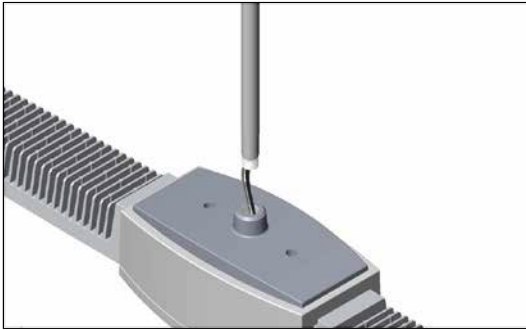


Fig. 2



Fig. 3

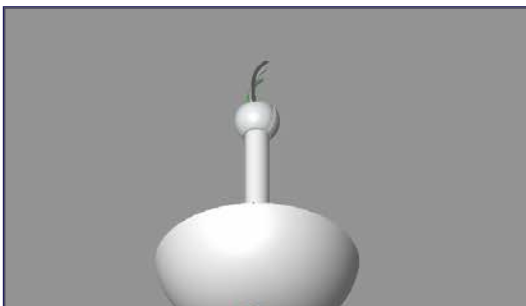


Fig. 4



Fig. 5



Fig. 6

