

# PGAS-1 LED Specifications



Project Name:

Catalog Number:

Type:

The **PGAS-1 LED** luminaire from Visionaire combines contemporary design with new LED technology while maintaining a traditional fixture image. The LED performance and Life are maximized by the unique integral aluminum heat sink. It is an ideal replacement for the high-maintenance fluorescent or HID fixtures of yesterday.

The LED housing is cast aluminum with internal heat sink for maximum heat dissipation with 16 or 32 LEDs. The cast aluminum driver compartment allows the driver to operate cooler for long life.

Three optical distribution patterns are available. 590 nm diode supplied as standard.

A durable polyester powder coat finish is guaranteed for five years and is available in standard or custom colors.

The **PGAS-1 LED** series is an exceptional choice for parking garage lighting and other wall mount applications.

## Ordering Information

MODEL	OPTICS	SOURCE	CURRENT	KELVIN	VOLTAGE	MOUNTING	FINISH	OPTIONS	
<b>PGAS-1</b>	<b>T2</b> Type 2	<b>16LC</b> *WSC for 16LC Only	<b>3</b> 350mA	<b>TS</b> 590 nm	<b>UNV</b> 120-277V	<b>WM</b> Wall Mount	<b>BZ</b> Bronze	<b>PC-120</b> Button Type Photocell	
	<b>T3</b> Type 3	<b>32LC</b>	<b>5</b> 530mA		<b>8</b> 347V		<b>VCB</b> Conduit Box Mounting Plate With (3) 1/2" Threaded Conduit Holes	<b>BK</b> Black	<b>PC-208</b> Button Type Photocell
	<b>T4</b> Type 4				<b>5</b> 480V			<b>SBK</b> Smooth Black	<b>PC-240</b> Button Type Photocell
							<b>WH</b> White	<b>PC-277</b> Button Type Photocell	
							<b>SWH</b> Smooth White	<b>WSC-8</b> Motion Sensor 8' Mounting Height	
							<b>GP</b> Graphite	<b>WSC-20</b> Motion Sensor 9-20' Mounting Height	
							<b>GY</b> Grey	<b>WSC-40</b> Motion Sensor 21-40' Mounting Height	
							<b>SL</b> Silver Metallic		
							<b>CC</b> Custom Color		
								WSC options will require (1) FSIR 100 remote for programming	
								WSC for 16LC Only	
								<b>BP</b> Back Plate	

### Housing

Heavy duty cast aluminum housing with internal heat sink for maximum heat dissipation. Silicone gasket is used for weather tight operation.

### Mounting

A Wall Mount bracket can be secured directly to a 4"-5" recessed junction box.

### Thermal Management

The PGAS-1 series provides excellent thermal management by mounting the LEDs to the substantial heat sink within the housing. This enables the Luminaire to withstand higher ambient temperatures and driver currents without degrading LED life.

### Optical System

- The highest lumen output LEDs are utilized. High-performance acrylic optics feature industry leading Type II, III and IV optical distributions. Acrylic optics are impact-resistant and rated to 94 percent translucence.
- L70 life of our LEDs is rated over 100,000 hours (for 530 mA), The optical system qualifies as IES full cutoff to restrict light trespass, glare and light pollution for neighborhood-friendly lighting.
- CRI values are 70.

### Quali-Guard® Finish

The finish is a Quali-Guard® textured, chemically pretreated through a multiple-stage washer, electrostatically applied, thermoset polyester powder coat finish, with a minimum of 3-5 millimeter thickness. Finish is oven-baked at 400° F to promote maximum adherence and finish hardness.

- All finishes are available in standard and custom colors.
- Finish is guaranteed for five (5) years.

### Electrical Assembly

The PGAS-1 LED series is supplied with a choice of 350 or 530 high-performance LED drivers that accept 120v thru 480v, 50 Hz to 60 Hz, input.

- Power factor of 90%.
- Rated for -40°C operations.
- 10 kV surge protector supplied as standard.

### Warranty

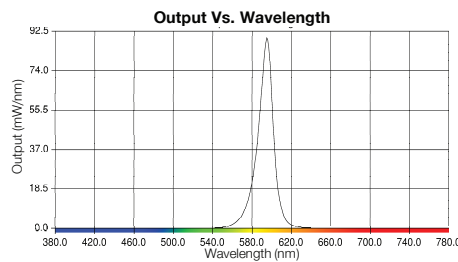
Five (5) year Limited Warranty on electrical components, Five (5) year on finish. For full warranty information, please visit [visionairelighting.com](http://visionairelighting.com).

### Options

- Watt Stopper FSP-211
- Button Type Photocell
- Back Plate

### Listings

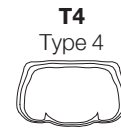
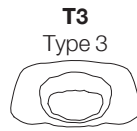
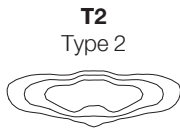
- PGAS-1 is cUL listed, suitable for wet locations.
- IP66 Rated
- Powder Coated Tough™



PGAS-1 - Electrical Load (A)									
Ordering Nomenclature	System Watts	120V	208V	240V	277V	347V	480V		
PGAS-1-T3-16LC-350MA	18	0.14	0.08	0.07	0.06	0.05	0.04		
PGAS-1-T3-16LC-530MA	26	0.22	0.12	0.11	0.09	0.07	0.05		
PGAS-1-T3-32LC-350MA	34	0.28	0.16	0.14	0.12	0.10	0.07		
PGAS-1-T3-32LC-530MA	53	0.43	0.25	0.22	0.19	0.15	0.11		
Motion Sensor Default Setting									
FSP - 211	High Mode	Low Mode	Time Delay	Cut Off Delay	Sensitivity	Hold Off Setpoint	Photocell On/Off	Ramp Up Time	Fade Down Time
WSC - Default	10V	1V	5 Minutes	1 Hour	Max	Disabled	Disabled	Disabled	Disabled
WSC Range	0-10V	0-9.8V	5-30 Minutes	1-5 Hours	Low, Med, Max	1-250FC	1-250FC	1-60 Dec	1-60 Dec

# PGAS-1 LED Specifications

## Photometric Optical Summary



## Dimensions

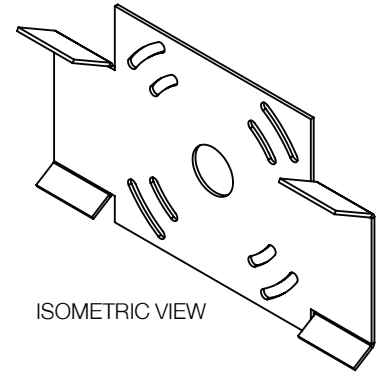
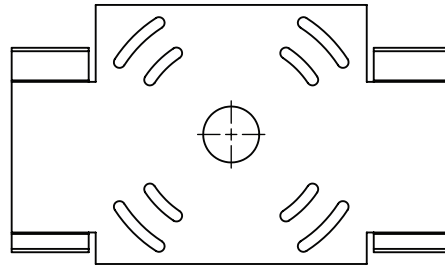
**Width:** PGAS-1 13.96"

**Height:** PGAS-1 5.53"

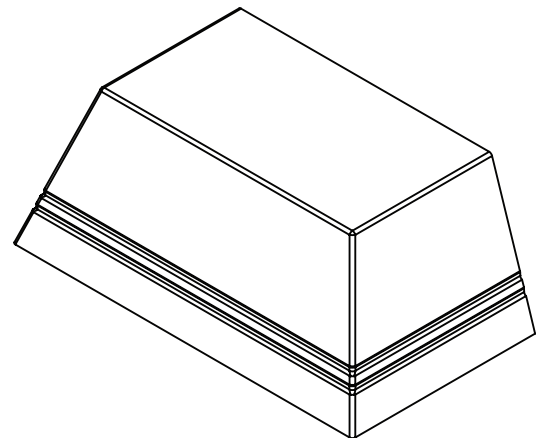
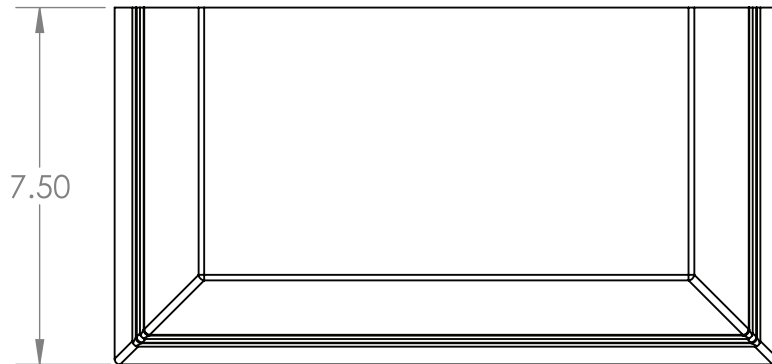
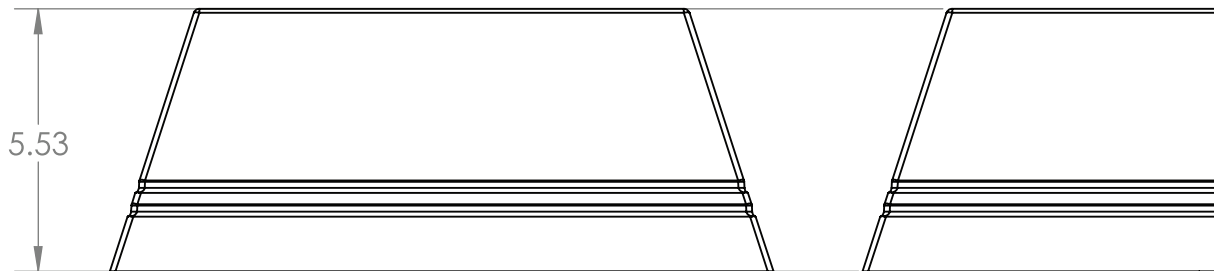
**Depth:** PGAS-1 7.50"

**Weight:** 20 LBS

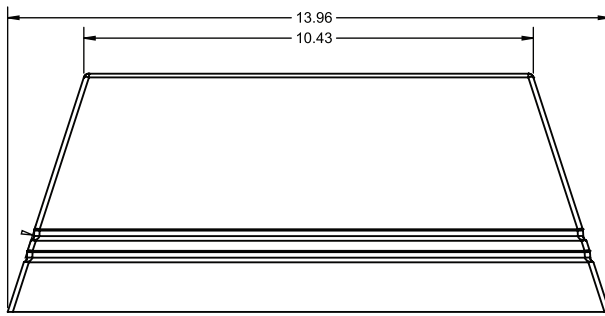
Bracket Wall Mount Support  
Compatible with 4" and 5" J-Box



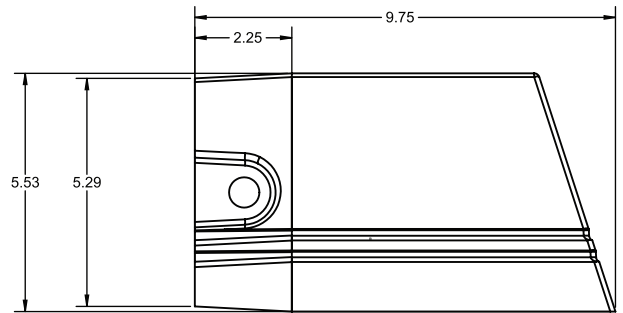
## PGAS-1 Dimensions



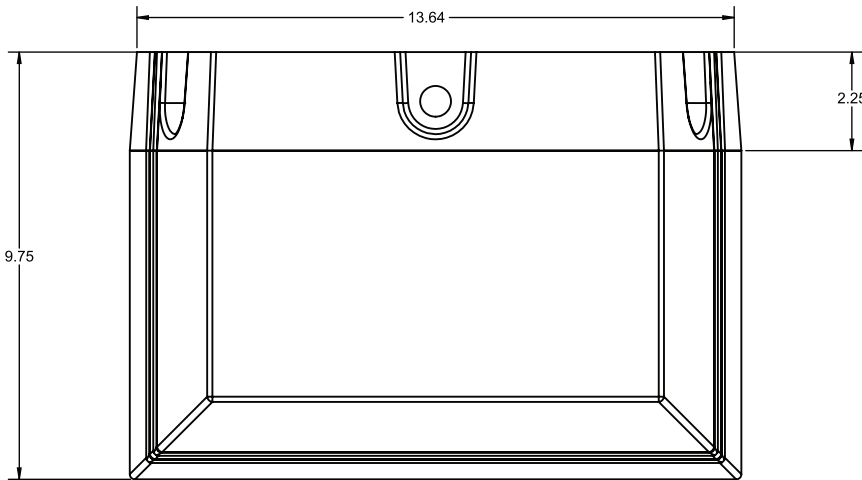
**PGAS-1 With VCB**



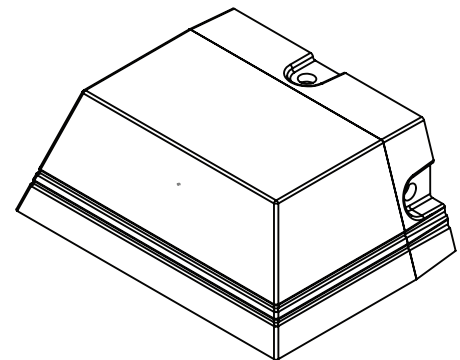
FRONT VIEW



SIDE VIEW



TOP VIEW



ISOMETRIC VIEW

PGAS-1-TS LUMEN DATA											
# LEDs	mA	T2	T3	T4	Power (W)						
16	350	991	995	969	17						
	530	1068	1073	1044	26						
32	350	2006	1966	1976	34						
	530	2210	2166	2176	52						
PGAS-1-TS LUMEN PER WATT DATA											
# LEDs	mA	T2	T3	T4	Power (W)						
16	350	58	59	57	17						
	530	41	41	40	26						
32	350	59	58	58	34						
	530	43	42	42	52						
PGAS-1-TS BUG DATA											
# LEDs	mA	T2			T3			T4			Power (W)
		B	U	G	B	U	G	B	U	G	
16	350	0	0	1	0	0	1	0	0	1	17
	530	0	0	1	0	0	1	0	0	1	26
32	350	1	0	1	1	0	1	1	0	1	34
	530	1	0	1	1	0	1	1	0	1	52