



Round Non Tapered Aluminum Pole

Pole Shaft

- Extruded from 6063 alloy aluminum tubing. Shaft is furnished with aluminum ground lug inside pole, opposite hand hole opening. Pole shaft includes a reinforced hand hole opening with cover.

Base Cover

- Die-formed from heavy gauge quality aluminum. Two piece square cover for easy installation. Square base cover is standard, round base cover is optional.
- Base templates provided with order. Do not pre-pour.

Pole Cap

- Color-impregnated polymer snap-to-close pole cap provided in black.

Finish

- All poles are ground and chemically pretreated through a multi-stage washer prior to painting. A Quali-Guard® textured thermoset polyester powder coat is then applied to a minimum of 3 mils and then oven-baked at a temperature of 400 °F to promote exceptional adherence and finish hardness. Optional Wood Grain Finish is a custom color and is limited to 20' pole height, please consult factory. Optional Zinc-Free Primer - Recommended within three miles of the ocean. Pole finish is warranted for a full two (2) years. An optional five (5) year extended warranty is also available.

Project Name:

Catalog Number:

Type:


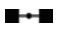


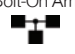

Date:

Location:

Anchor Bolts

- Poles are provided with hot-dip galvanized anchor bolts, with a "J" bend on one end and two flat hex bolts end and two flat washers per bolt. Anchor bolts meet or exceed a minimum of 36,000 PSI. Anchor bolts conform to ASTM F1554 grade 36 and are provided

MODEL	SHAFT SIZE	GAUGE	HEIGHT	BASE	ANCHORAGE
RNTA Round Non Tapered Aluminum	4R 4" 5R 5"	125 .125" - 4" Pole Only up to 14 feet 188 .188" 250 .250"	10' 12' 14' 16' 18' 20'	AKB Cast Aluminum Base CB Custom Base *Consult Factory	343 3/4" X 30"

MOUNTING	FINISH	OPTIONS
<p>S1 Single Bolt-On Arm </p> <p>D2 Double 180° Bolt-On Arm </p> <p>D9 Double 90° Bolt-On Arm </p> <p>T1 Triple 120° Bolt-On Arm </p> <p>T9 Triple 90° Bolt-On Arm </p> <p>QD Quad Bolt-On Arm </p> <p>Tenon Options</p> <p>T238R 2 3/8"</p> <p>T3R 3"</p> <p>T3.5R 3 1/2"</p> <p>T4R 4"</p>	<p>BZ Bronze</p> <p>BK Black</p> <p>SBK Smooth Black</p> <p>WH White</p> <p>SWH Smooth White</p> <p>GP Graphite</p> <p>GY Grey</p> <p>SL Silver Metallic</p> <p>GN Tennis Green</p> <p>FG Forest Green</p> <p>CC Custom Color</p> <p>WGF Custom Wood Grain Finish *20' Max Pole Height *Consult Factory</p> <p>ANO Anodized *No Paint</p> <p>XX+ANO Powder Coat Paint Over Anodized</p> <p>ZFP Zinc-Free Primer Coat *Consult Factory</p>	<p>GFI GFI Receptacle *Standard location is in hand hole. *Specify GFI location if different from hand hole location. Supplied with in use cover.</p> <p>USB USB Receptacle *Specify location. Supplied with in use cover.</p> <p>CUP1/2 Coupling 1/2" *Specify location</p> <p>CUP3/4 Coupling 3/4" *Specify location</p> <p>IVD Internal Vibration Dampener</p> <p>RBC Round Base Cover</p> <p>EB Eye Bolt</p> <p>UL UL Certified</p>

***Consult factory for EPA data.**

· CAUTION: If any additional stress such as flags, banners, streamers, ropes, or any other such items are added to poles, Visionaire Lighting's normal product guarantee is null and void. Additionally, adding such items to any pole may create severely hazardous conditions. Poles are calculated to withstand steady wind velocities of between 70 and 100 mph wind zones with a 1.3 gust factor depending on height, wall thickness, and width/ diameter. For an exact rating on a specific order, contact Visionaire directly.

· Certain geographic areas experience unique wind conditions that can cause wind-induced vibrations leading to a fatigue problem. There is currently no known method to predict destructive vibration of lighting poles. These conditions are unique and cannot be guaranteed against, and it is the responsibility of a site engineer to address them locally.

GFI Receptacle

Standard location is in hand hole.
Supplied with in-use cover.

**USB Receptacle**

Standard location is in hand hole.
Supplied with in-use cover.



Optional round base cover shown.

Eye Bolt

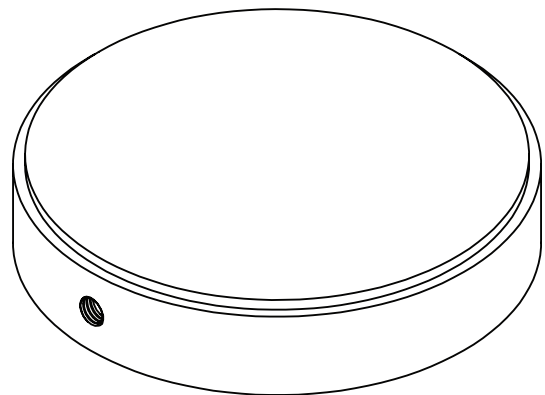
Specify orientation, height and location.
1 17/32" Max eye diameter. Standard
position 6" downwards from top, same
side as standard hand hole.



Optional round
base cover shown.

UL Certified

UL Certified option comes
supplied with aluminum
pole cap as standard.



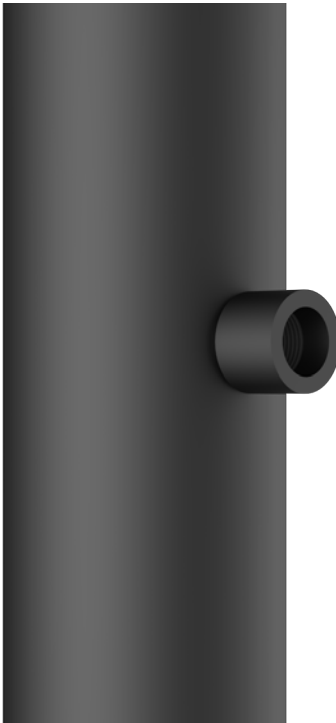
1/2" Coupling

Specify orientation, height and location

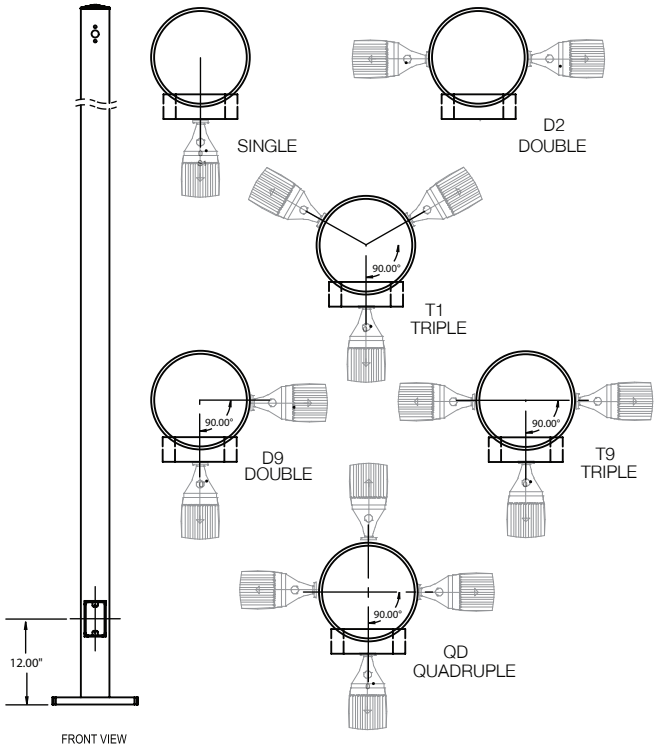


3/4" Coupling

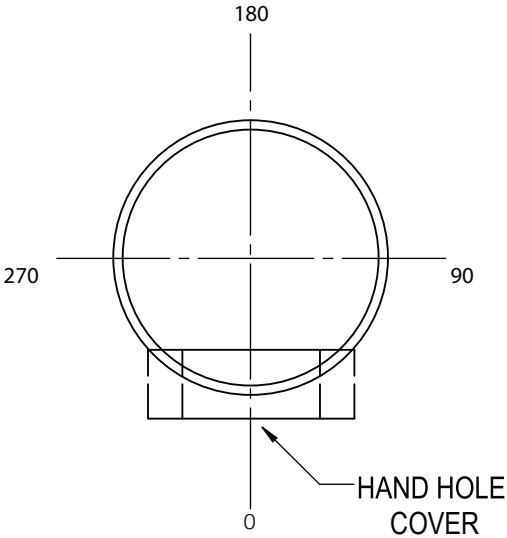
Specify orientation, height and location



Hand Hole And Fixture Orientation



Hand Hole And Accesories Orientation



Internal Vibration Dampener

Internal Chain Vibration Damper can be installed in the field to mollify first mode pole vibration.



Optional round
base cover shown.

Custom Wood Grain Finish

Multi Stage Process for realistic wood grain finish. 20' Pole Height Max. Consult factory.



Standard Finish Colors

