



# VOKEY

ARCHLINE

By VISIONAIRE LIGHTING

# VOKEY ARCHLINE

The new *Vokey Archline* product family from Visionaire Lighting brings a refined architectural aesthetic, scalable performance, and exceptional design flexibility to modern exterior environments. Available in multiple area-light sizes, a coordinating bollard, and a wall mount version, Vokey Archline allows designers to create a cohesive lighting package across campuses, pathways, plazas, parking areas, building perimeters, and pedestrian spaces.



A tall, dark grey lighting fixture with a vertical post and a horizontal arm extending from the top. The arm holds two long, rectangular light fixtures, each containing a row of LED chips. The fixture is shown in a perspective view against a dark blue background with abstract light patterns.

## **VKKA**

*Sleek linear lighting designed for modern architectural environments.*

- 3 Sizes
- 2700K, 3000K, 3500K, 4000K, 5000K, TS
- 70, 80 & 90 CRI
- 19 Optic Choices
- 32,000+ Lumens
- 10' to 24'
- Multi-Fixture Configurations
- Wall Mount
- Zhaga / DMX / 7-Pin Controls

A tall, dark grey lighting fixture with a vertical post and a square light fixture mounted at the top. The light fixture is recessed into the top of the post. The fixture is shown in a perspective view against a dark blue background with abstract light patterns.

## **VKB**

*A refined linear bollard solution crafted for contemporary architectural settings.*

- 2700K, 3000K, 3500K, 4000K, 5000K, TS
- 70, 80 & 90 CRI
- 10 Optic Choices
- 6,900+ Lumens
- 2.5' to 12'
- Multi Fixture Configurations
- GFI / USB Receptacle

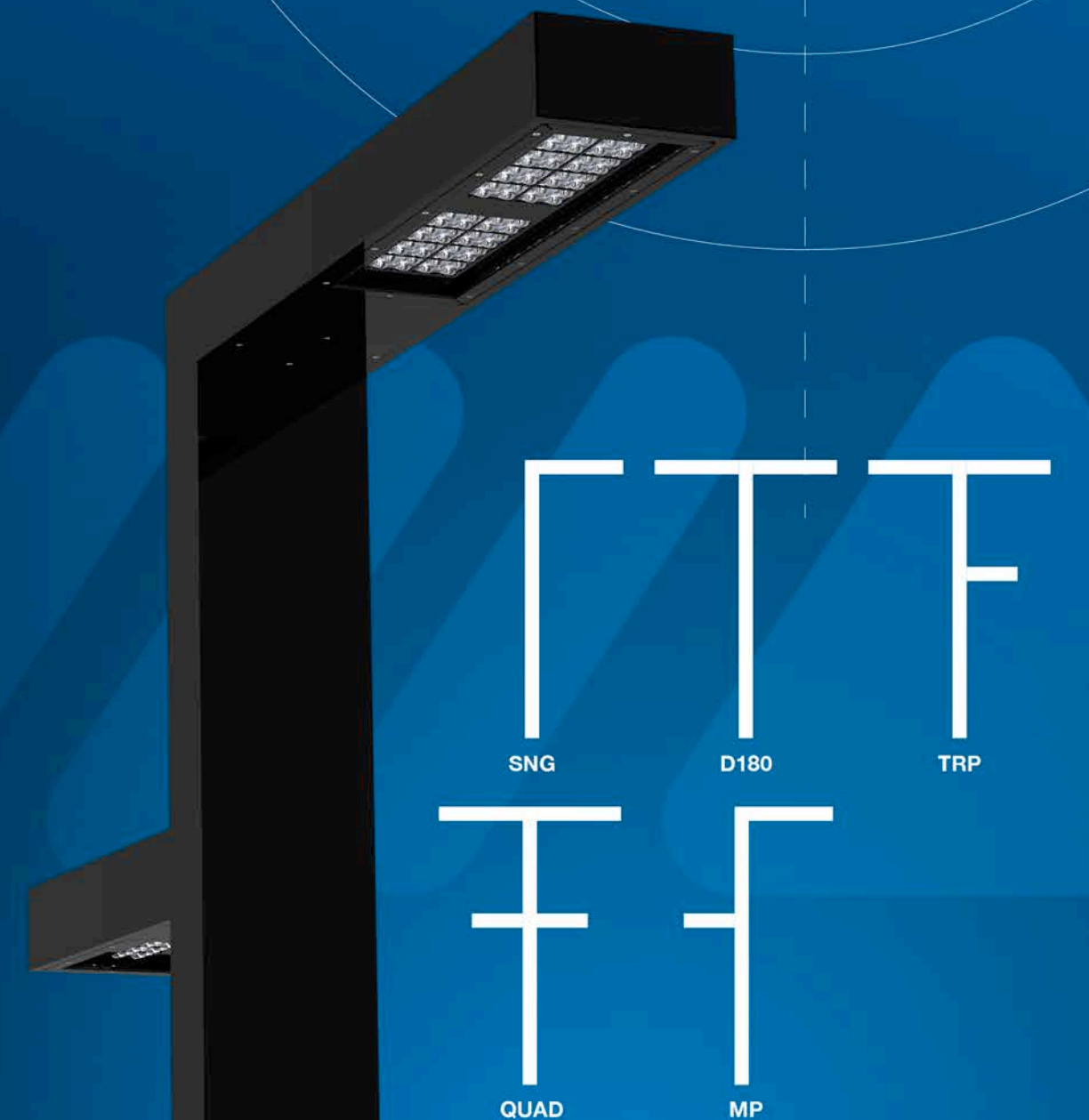
## Design Flexibility

The Vokey Archline on a mid-pole configuration opens the door to a wide range of design possibilities, allowing you to create striking fixture combinations from one cohesive architectural family. Its clean, linear form can be arranged in multiple configurations to deliver a custom look while maintaining a refined, contemporary aesthetic across the site.

With three fixture sizes available, the Vokey Archline adapts easily to the scale and character of each application. From pedestrian-oriented spaces to larger outdoor environments, it offers the flexibility to create lighting solutions that feel both intentional and visually unified.

Performance is equally versatile, with lumen packages ranging from 2,300 to 32,000+ lumens. Standard options include 2700K, 3000K, 3500K, 4000K, or 5000K color temperatures, along with 70, 80, or 90 CRI, giving designers the freedom to fine-tune light quality, warmth, and visual impact.

More than a fixture, the Vokey Archline mid-pole configuration functions as a creative lighting system, designed to bring architectural elegance, scalable performance, and configuration flexibility to campuses, plazas, walkways, streetscapes, and beyond.



**ALUMINUM EXTRUDED HOUSING**

**SILICONE GASKETS**

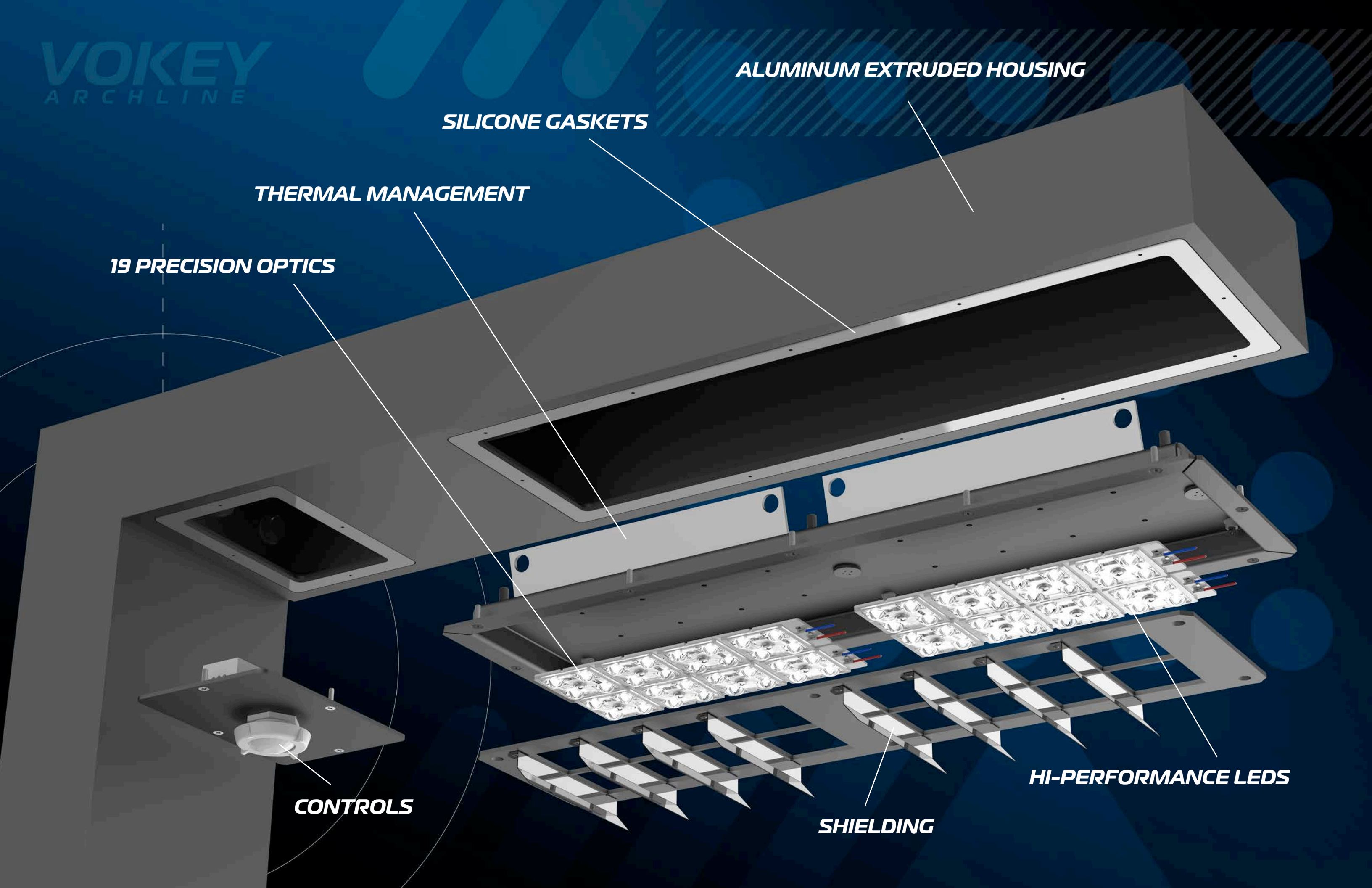
**THERMAL MANAGEMENT**

**19 PRECISION OPTICS**

**HI-PERFORMANCE LEDS**

**SHIELDING**

**CONTROLS**



**VOKEY**  
WALL MOUNT



## **VOKEY WALL MOUNT**

The new Vokey Archline Size 1 from Visionaire Lighting brings the bold, contemporary character of the Vokey family to a compact architectural wall mount solution. Paired with our new cast wall plate, the fixture delivers a clean, refined installation that complements modern building facades, entryways, walkways, courtyards, and exterior architectural spaces.

Designed with flexibility in mind, the Vokey Archline Size 1 can be configured to meet a wide range of project requirements. It is available with Visionaire's full standard selection of CRI and CCT options, allowing designers to fine-tune color quality, warmth, and visual performance for each application.

To complete the design, the fixture is also offered in Visionaire's standard powder coat color options, with custom finishes available to help coordinate with surrounding architecture and site elements. The result is a sleek, high-performance wall-mount luminaire that combines architectural style, durable construction, and the versatility today's lighting projects demand.

## **VOKEY BOLLARD**

The Vokey Bollard Series extends the distinctive, contemporary design of the Vokey Archline Collection into a refined, low-level lighting solution that brings modern architectural character to pedestrian spaces. With its sleek profile and clean lines, it enhances pathways, plazas, courtyards, and landscape settings with a sophisticated visual presence.

Engineered for both performance and versatility, the Vokey Bollard LED Series offers a wattage range of 20W to 60W and features eight optical distribution patterns for precise, application-specific light control. Designers can also select from 2700K, 3000K, 3500K, 4000K, or 5000K color temperatures to achieve the ideal balance of warmth, clarity, and visual comfort.

With integrated controls, the Vokey Bollard is designed to provide efficient illumination while supporting reduced energy consumption and dependable performance. Its combination of advanced lighting technology and architectural styling makes it a smart solution for projects where aesthetics and functionality must work together seamlessly.

A durable polyester powder-coat finish, backed by a five-year finish guarantee, is available in both standard and custom colors for seamless integration with a wide range of design palettes. The Vokey Bollard LED Series is an exceptional choice for architectural area lighting applications where contemporary design, performance, and long-term durability are essential.

**VOKEY**  
ARCHLINE



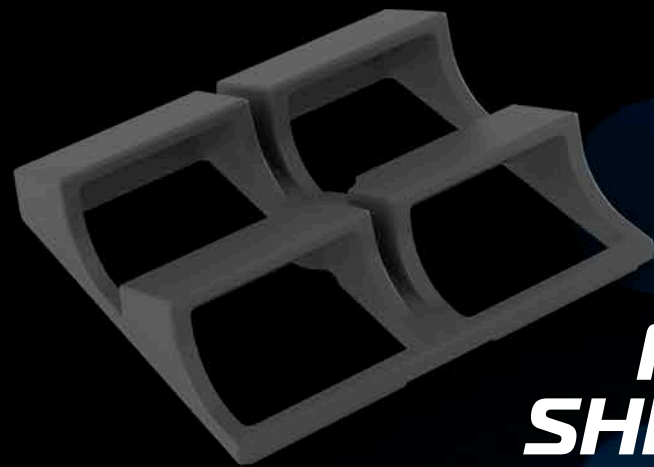
# 19 PRECISION OPTICS

Visionaire Lighting's 19 standard precision optics give engineers and lighting designers exceptional flexibility to control light with purpose and accuracy. Each optic is developed to place illumination where it is needed most, helping create efficient, comfortable, visually balanced environments across a wide range of exterior lighting applications.

From parking lots, roadways, and auto dealerships to campuses, pathways, plazas, and architectural site lighting, our optical platform supports the unique performance needs of every project. With a broad selection of distributions, designers can better manage coverage, uniformity, pole spacing, light trespass, and overall visual comfort.

Visionaire is also expanding its optical capabilities, with several new precision optics coming soon. These additions will create even more opportunities to fine-tune lighting layouts, solve challenging site conditions, and deliver improved performance for specialized applications.

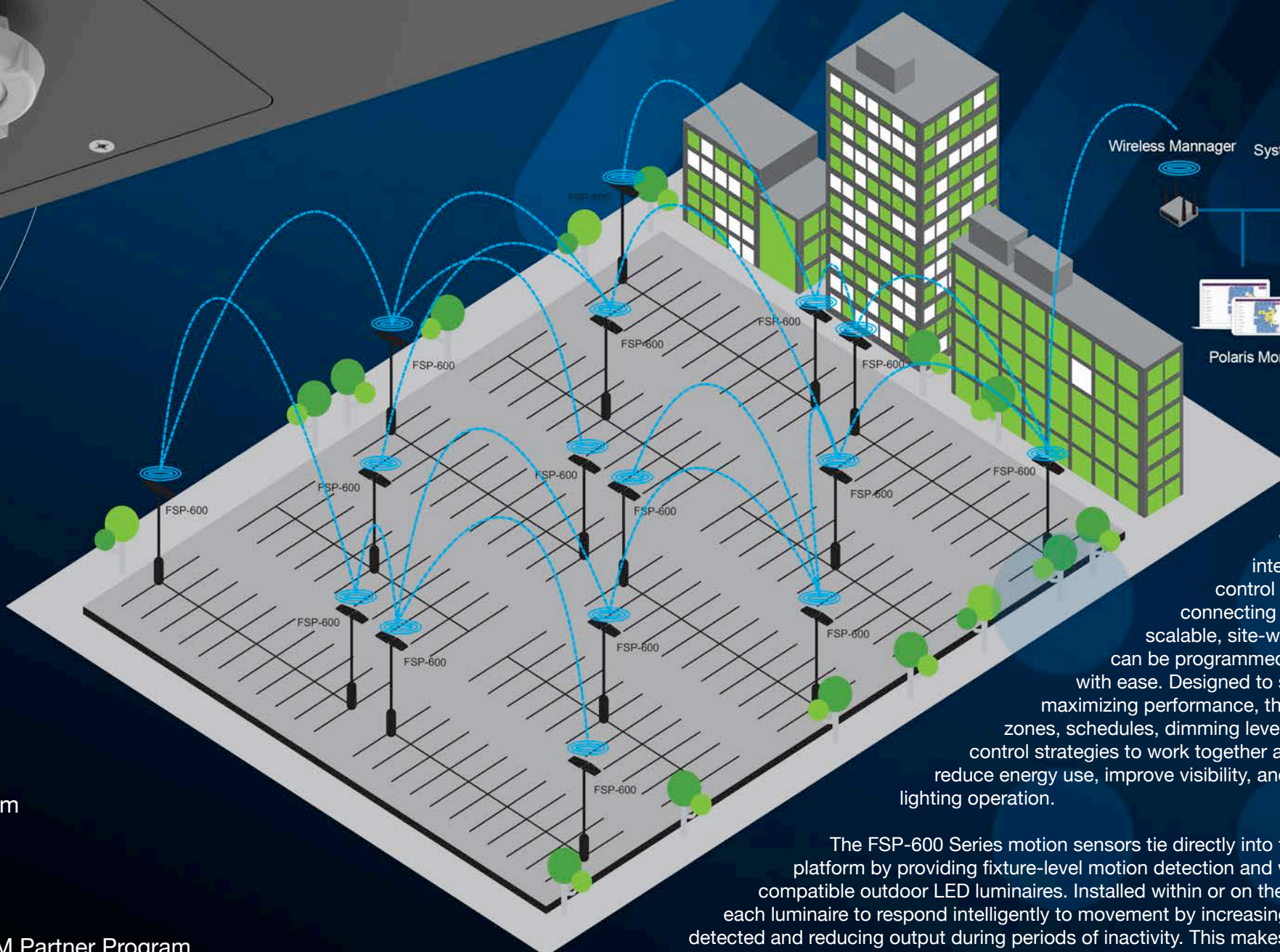
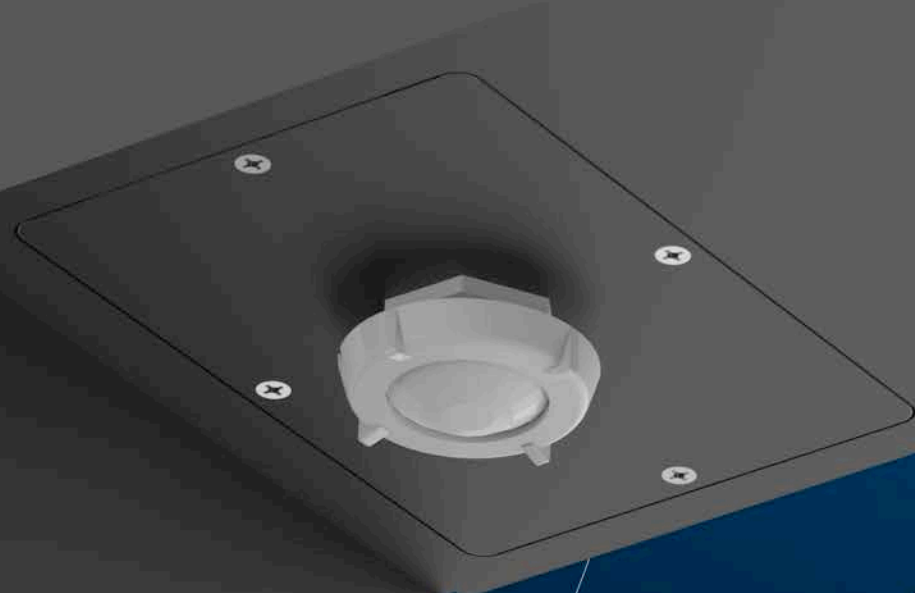
Our commitment to optical innovation is ongoing. Visionaire is constantly developing new optics to help engineers and lighting designers create the optimal lighting scenarios, balancing performance, efficiency, control, and aesthetics to support safer, smarter, and more intentional illuminated spaces.



## PRECISION SHIELDING

Visionaire Lighting offers a range of standard shielding options designed to improve visual comfort, reduce unwanted glare, and provide greater control over light distribution. These shielding solutions help tailor each fixture to the needs of the application, whether the goal is to minimize light trespass, support dark-sky friendly design, or create a cleaner, more comfortable nighttime environment.

Our new precision optic-level cutoff shield takes optical control even further by shielding at the individual optic level. This advanced approach helps manage glare directly at the source while preserving performance and distribution accuracy. It gives engineers and lighting designers another powerful tool to fine-tune illumination, protect surrounding spaces, and create more intentional, responsible lighting solutions.



# WATTSTOPPER®



Seamless integration into the Wattstopper® Plus Lighting Control Platform



Out-of-the-Box Functionality



Control zoning, groups, schedules, and more from the Polaris Monitor Software



FSP-600 Series is included in Wattstopper's OEM Partner Program

## WATTSTOPPER® PLUS

Wattstopper PLUS brings intelligent wireless lighting control to outdoor environments by connecting LED fixtures to a scalable, site-wide system. The platform can be programmed, monitored, and adjusted with ease. Designed to simplify setup while maximizing performance, the system allows lighting zones, schedules, dimming levels, and occupancy-based control strategies to work together across a site—helping reduce energy use, improve visibility, and support code-compliant lighting operation.

The FSP-600 Series motion sensors tie directly into the Wattstopper PLUS platform by providing fixture-level motion detection and wireless communication for compatible outdoor LED luminaires. Installed within or on the fixture, the FSP-600 allows each luminaire to respond intelligently to movement by increasing output when activity is detected and reducing output during periods of inactivity. This makes the system ideal for parking lots, pathways, campuses, exterior building areas, and other outdoor applications where reliable, adaptive LED control is needed without extensive control wiring.



**VOKEY**  
ARCHLINE



*Black*

*Smooth Black*

*White*

*Smooth White*

*Grey*

*Graphite*

*Bronze*

*Silver Metallic*

## ***Architectural Color Options***

Visionaire Lighting offers eight standard powder-coat color options designed to complement a wide range of architectural styles, landscapes, and project environments. Each finish is engineered for lasting durability, helping protect the fixture while maintaining a clean, professional appearance over time. From classic neutrals to contemporary tones, our standard color palette gives designers, architects, and project teams the flexibility to achieve a polished look with confidence.

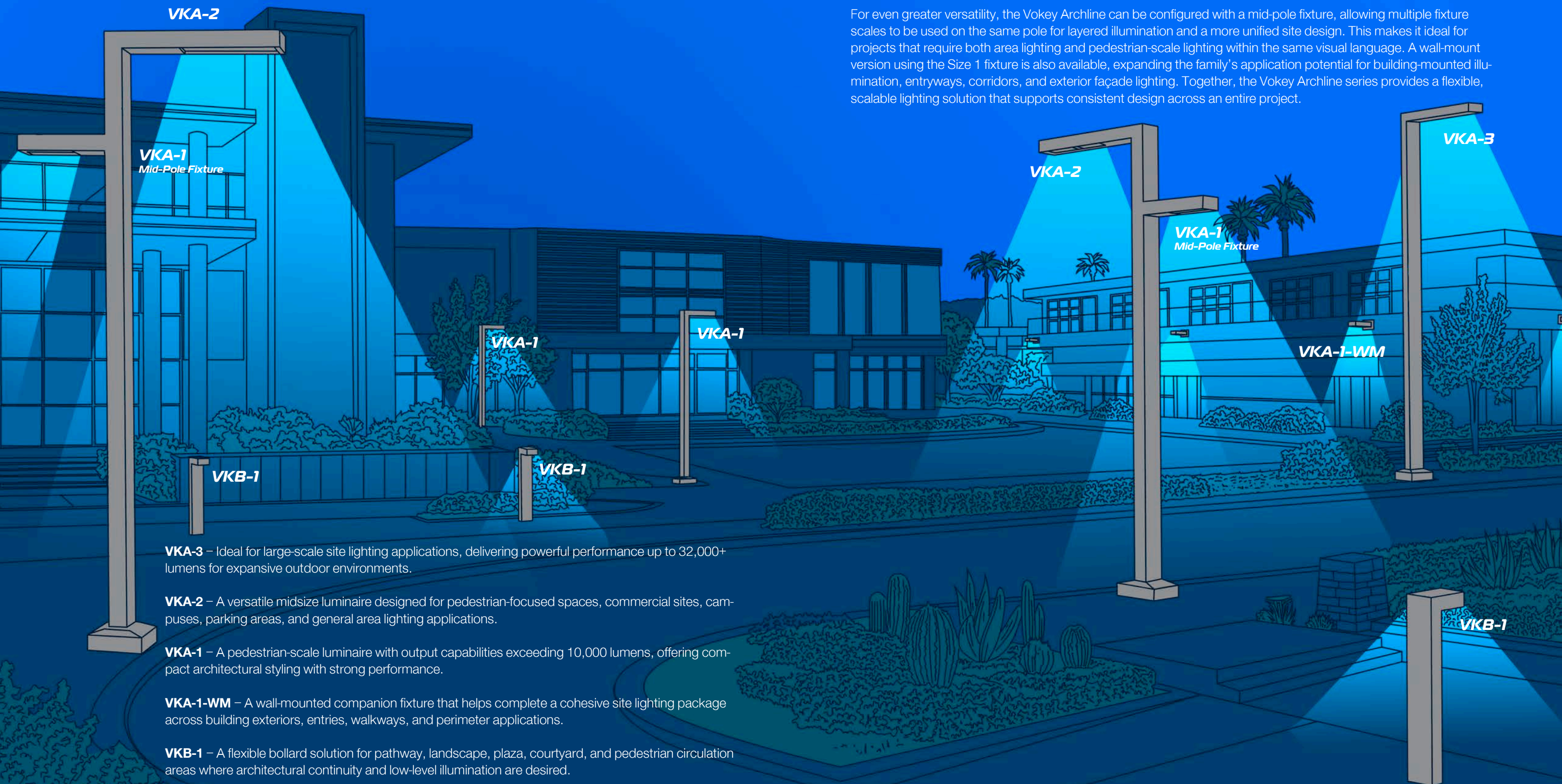
For projects that require a more specialized finish, Visionaire also offers custom color options to help match surrounding architecture, site furnishings, branding, or unique design requirements. In addition, our seven new wood grain finishes bring the warmth and character of natural materials to high-performance architectural lighting—offering the beauty of wood with the durability and low-maintenance performance of a powder-coat finish.

**VKA**  
**ARCHLINE**

## Architectural Design Guide

The new Vokey Archline LED luminaire from Visionaire Lighting offers exceptional design flexibility for a wide range of architectural and site-lighting applications. Available in three sizes and a coordinating bollard, the Vokey Archline family gives designers the ability to create a cohesive lighting package across pedestrian areas, roadways, pathways, campuses, plazas, courtyards, and building perimeters. Its clean architectural form allows it to blend seamlessly into modern environments while still delivering the performance and visual impact required for today's outdoor lighting projects.

For even greater versatility, the Vokey Archline can be configured with a mid-pole fixture, allowing multiple fixture scales to be used on the same pole for layered illumination and a more unified site design. This makes it ideal for projects that require both area lighting and pedestrian-scale lighting within the same visual language. A wall-mount version using the Size 1 fixture is also available, expanding the family's application potential for building-mounted illumination, entryways, corridors, and exterior façade lighting. Together, the Vokey Archline series provides a flexible, scalable lighting solution that supports consistent design across an entire project.



**VKA-3** – Ideal for large-scale site lighting applications, delivering powerful performance up to 32,000+ lumens for expansive outdoor environments.

**VKA-2** – A versatile midsize luminaire designed for pedestrian-focused spaces, commercial sites, campuses, parking areas, and general area lighting applications.

**VKA-1** – A pedestrian-scale luminaire with output capabilities exceeding 10,000 lumens, offering compact architectural styling with strong performance.

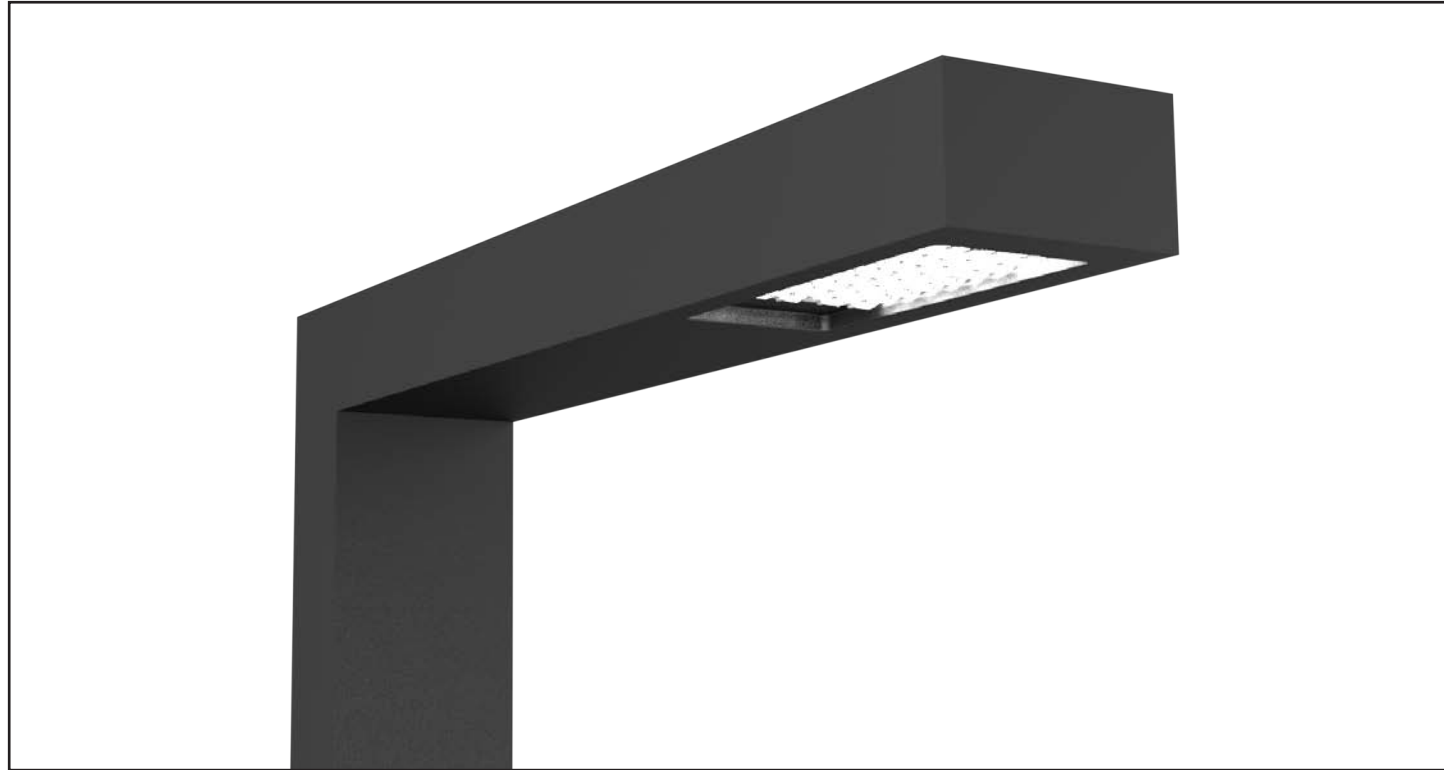
**VKA-1-WM** – A wall-mounted companion fixture that helps complete a cohesive site lighting package across building exteriors, entries, walkways, and perimeter applications.

**VKB-1** – A flexible bollard solution for pathway, landscape, plaza, courtyard, and pedestrian circulation areas where architectural continuity and low-level illumination are desired.



# VOKEY ARCHLINE - LED Specifications

Architectural - Commercial - Outdoor



The Vokey Archline Series translates the bold, contemporary character of the Vokey family into a sleek architectural linear form, delivering 2,300 to 32,000+ lumens of high-performance illumination within a refined, minimalist profile. Clean lines and a strong visual presence make it an ideal solution for projects that demand both design sophistication and lighting performance.

Crafted from precision extruded aluminum, Vokey Archline is engineered for long-term reliability, with a design that optimizes thermal performance to support LED and driver longevity while maximizing delivered light. With wattages ranging from 16W to 204W, it offers exceptional flexibility across a broad range of applications, from understated linear accents to powerful, high-output architectural runs.

To give designers greater control, the series offers nineteen optical distribution patterns that allow light to be shaped with precision for the needs of each space. Color temperatures of 2700K, 3000K, 3500K, 4000K, and 5000K are available, along with 70, 80, or 90 CRI options, making it easy to achieve the desired balance of warmth, clarity, and visual impact.

A durable polyester powder-coat finish, backed by a five-year finish guarantee, is offered in standard and custom colors for seamless integration with virtually any architectural palette. From modern façades and walkways to feature walls and striking architectural highlights, the Vokey Archline Series is a versatile linear lighting solution designed to look exceptional, perform beautifully, and endure.

Project Name:	
Catalog Number:	
Type:	
Date:	Location:

Visionaire Lighting products are engineered with field serviceability and environmental responsibility at the core, giving customers a smarter, longer-lasting lighting solution. Designed for efficient maintenance and simplified access to key components, our fixtures help reduce downtime, extend product life, and make in-field updates or repairs faster and more cost-effective.



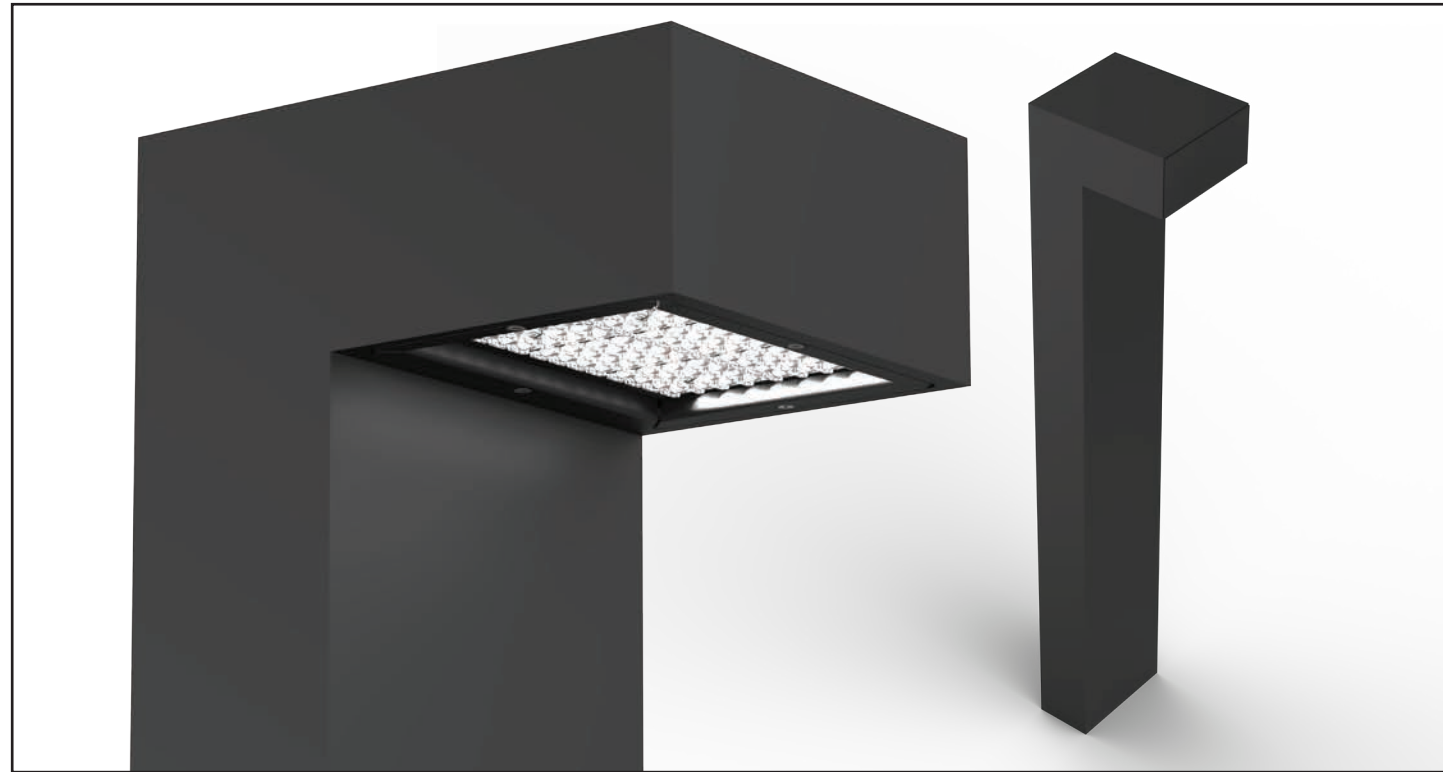
## LED Specifications VOKEY ARCHLINE

MODEL	OPTICS	LEDs	CURRENT	CCT	
<b>VKA-1</b> 20"	<b>T1</b> Type 1 <b>T2</b> Type 2 <b>T3R</b> Type 3 Round	<b>T5</b> Type 5 <b>T5L</b> Type 5 Long <b>T5W</b> Type 5 Wide	<b>16LD</b> <b>32LD</b>	<b>3</b> 350mA <b>5</b> 530mA <b>7</b> 700mA	<b>27K7 27K8 27K9</b> 2700K 70, 80, & 90 CRI <b>30K7 30K8 30K9</b> 3000K 70, 80, & 90 CRI <b>35K7 35K8 35K9</b> 3500K 70, 80, & 90 CRI <b>40K7 40K8 40K9</b> 4000K 70, 80, & 90 CRI <b>50K7 50K8 50K9</b> 5000K 70, 80, & 90 CRI
<b>VKA-2</b> 35"	<b>T3</b> Type 3 <b>T3W</b> Type 3 Wide <b>T3LG</b> Type 3 Low Glare	<b>T5WW</b> Type 5 Extra Wide <b>T5LG</b> Type 5 Low Glare	<b>16LD</b> <b>32LD</b> <b>64LD</b>		
<b>VKA-3</b> 45"	<b>T4</b> Type 4 <b>T4A</b> Type 4 Automotive <b>T4FT</b> Type 4 Forward Throw <b>T4LG</b> Type 4 Low Glare <b>T4T</b> Type 4 Tennis	<b>FN</b> Flood Narrow <b>FM</b> Flood Medium <b>FW</b> Flood Wide	<b>64LD</b> <b>96LD</b>		
VOLTAGE	CONFIGURATION	FINISH	CONTROL OPTIONS	SHIELD OPTIONS	OPTIONS
<b>UNV</b> 120-277V <b>8</b> 347V <b>5</b> 480V	<b>SNG</b> Single <b>D180</b> Double <b>TRP</b> Triple <b>QUAD</b> Quad 180 <b>MP</b> Mid Pole Fixture <b>WM</b> Wall Mount <b>POLE HEIGHT</b>	<b>BZ</b> Bronze <b>BK</b> Black <b>SBK</b> Smooth Black <b>WH</b> White <b>SWH</b> Smooth White <b>GP</b> Graphite <b>GY</b> Grey <b>SL</b> Silver Metallic <b>ZFP</b> Zinc-Free Marine Grade Primer Coat <b>CC</b> Custom Color	<b>PCR-120 PCR-208</b> <b>PCR-240 PCR-277</b> <b>PCR-347 PCR-480</b> Photocell & Receptacle <b>7PINPER</b> 7 Pin Photo Receptacle w/shorting cap Requires Dimming Driver <b>DIM</b> 0-10v Dimming Driver <b>DTO</b> Dim To Off <b>D4i</b> D4i DALI Driver	<b>RCLS</b> Rightside cutoff shield <b>LCLS</b> Leftside cutoff shield <b>BHS</b> House shield	<b>BAWP</b> Cast Wall Plate <b>ROT-R</b> Rotated Optics Right Side <b>ROT-L</b> Rotated Optics Left Side <b>GFI</b> GFI Receptacle * Standard location is in hand hole. * Specify GFI location if different from hand hole location. Supplied with in use cover. <b>USB</b> USB Receptacle * Specify location. Supplied with in use cover. <b>BBG</b> Bird Spikes <b>BAA</b> Buy America(n) Act Compliant <b>BABA</b> Build America Buy American <b>MP FIXTURE HEIGHT</b>
	<b>10</b> <b>12</b> <b>14</b> <b>16</b> <b>18</b> <b>20</b> <b>22</b> <b>24</b>		<b>WSP6-L2 WSP6-L3 WSP6-L7</b> 8' Mounting Height 9-20' Mounting Height 21-40' Mounting Height <b>WSC-8 WSC-20 WSC-40</b> 8' Mounting Height 9-20' Mounting Height 21-40' Mounting Height * The WSC option will require (1) FSIR 100 remote for programming <b>TL7</b> 7-PIN Twist-lock Wireless Control <b>Z10 or Z18</b> Zhaga 4 Pin Receptacle <b>VWC</b> Visionaire Wireless Control		<b>10</b> <b>12</b> <b>14</b> <b>16</b> <b>18</b> <b>20</b>



# VOKEY BOLLARD LED Specifications

Architectural - Site - Outdoor



The Vokey Bollard Series extends the distinctive contemporary design of the Vokey Archline Collection into a refined, low-level lighting solution that brings modern architectural character to pedestrian spaces. With its sleek profile and clean lines, it enhances pathways, plazas, courtyards, and landscape settings with a sophisticated visual presence.

Engineered for both performance and versatility, the Vokey Bollard LED Series offers a wattage range of 20W to 60W and features ten optical distribution patterns for precise, application-specific light control. Designers can also select from 2700K, 3000K, 3500K, 4000K, or 5000K color temperatures to achieve the ideal balance of warmth, clarity, and visual comfort.

With integrated controls, the Vokey Bollard is designed to provide efficient illumination while supporting reduced energy consumption and dependable performance. Its combination of advanced lighting technology and architectural styling makes it a smart solution for projects where aesthetics and functionality must work together seamlessly.

A durable polyester powder-coat finish, backed by a five-year guarantee, is available in both standard and custom colors for seamless integration with a wide range of design palettes. The Vokey Bollard LED Series is an exceptional choice for architectural area lighting applications where contemporary design, performance, and long-term durability are essential.

Project Name:	
Catalog Number:	
Type:	
Date:	Location:

Visionaire Lighting products are engineered with field serviceability and environmental responsibility at the core, giving customers a smarter, longer-lasting lighting solution. Designed for efficient maintenance and simplified access to key components, our fixtures help reduce downtime, extend product life, and make in-field updates or repairs faster and more cost-effective.



## LED Specifications VOKEY BOLLARD

MODEL	OPTICS	WATTS	CCT	VOLTAGE
<b>VKB-1</b>	<b>T1</b> Type 1	<b>20</b>	<b>27K7 27K8 27K9</b> 2700K 70, 80, & 90 CRI	<b>UNV</b> 120-277V
<b>VKB-1MS</b> With Motion Sensor	<b>T2</b> Type 2	<b>30</b>	<b>30K7 30K8 30K9</b> 3000K 70, 80, & 90 CRI	
	<b>T3</b> Type 3	<b>40</b>	<b>35K7 35K8 35K9</b> 3500K 70, 80, & 90 CRI	
	<b>T3L</b> Type 3 Long	<b>50</b>	<b>40K7 40K8 40K9</b> 4000K 70, 80, & 90 CRI	
	<b>T4</b> Type 4	<b>60</b>	<b>50K7 50K8 50K9</b> 5000K 70, 80, & 90 CRI	
	<b>T4A</b> Type 4 Automotive			
	<b>T4L</b> Type 4 Long			
	<b>T5SR</b> Type 5 Square Round			
	<b>T5LR</b> Type 5 Long Round			
	<b>T5LS</b> Type 5 Long Square			

CONFIGURATION	POLE HEIGHT	FINISH	CONTROL OPTIONS	SHIELD OPTIONS	OPTIONS
<b>SNG</b> Single	<b>2.5</b> 2 feet 6 inches	<b>BZ</b> Bronze	<b>PC-120 - PC-208</b> <b>PC-240 - PC-277</b> Button Type Photocell	<b>CLS</b> Backside cutoff shield	<b>ROT-R</b> Rotated Optics Right Side
<b>D180</b> Double	<b>3</b> 3 feet	<b>BK</b> Black	<b>DIM</b> 0-10v Dimming Driver	<b>RCLS</b> Rightside cutoff shield	<b>ROT-L</b> Rotated Optics Left Side
	<b>3.5</b> 3 feet 6 inches	<b>SBK</b> Smooth Black	<b>DTO</b> Dim to Off Driver	<b>LCLS</b> Leftside cutoff shield	<b>GFI</b> GFI Receptacle *Standard location is in hand hole. *Specify GFI location if different from hand hole location. Supplied with in use cover.
	<b>4</b> 4 feet	<b>WH</b> White	<b>D4i</b> D4i DALI Driver	<b>BHS</b> House shield	<b>USB</b> USB Receptacle *Specify location. Supplied with in use cover.
	<b>5</b> 5 feet	<b>SWH</b> Smooth White	<b>WSP6-L2 WSP6-L3 WSP6-L7</b> 8' 9-20' 21-40' Mounting Mounting Mounting Height Height Height		<b>BBG</b> Bird Spikes
	<b>6</b> 6 feet	<b>GP</b> Graphite	<b>WSC-8 WSC-20 WSC-40</b> 8' 9-20' 21-40' Mounting Mounting Mounting Height Height Height		<b>AB34</b> Anchor Base (Anchor Bolt Kit Included)
	<b>7</b> 7 feet	<b>GY</b> Grey	*The WSC option will require (1) FSIR 100 remote for programming		<b>CBC</b> Cast Base Cover
	<b>8</b> 8 feet	<b>SL</b> Silver Metallic	<b>Z10 or Z18</b> Zhaga 4 Pin Receptacle		<b>BAA</b> Buy America(n) Act Compliant
	<b>9</b> 9 feet	<b>ZFP</b> Zinc-Free Marine Grade Primer Coat	<b>VWC</b> Visionaire Wireless Control		<b>BABA</b> Build America Buy American
	<b>10</b> 10 feet	<b>CC</b> Custom Color			
	<b>11</b> 11 feet				
	<b>12</b> 12 feet				



# VOKEY ARCHLINE

LINEAR ARCHITECTURAL LUMINAIRE



**VISIONAIRE**  
L I G H T I N G

3780 Kilroy Airport Way, Suite 650, Long Beach, CA 90806  
310.512.6480 • [www.visionairelighting.com](http://www.visionairelighting.com)