

# BLX-II ARRAY LED Specifications

BLX-II-4 shown with Arm Mount and optional Decorative Shroud



Project Name:

Catalog Number:

Type:

The new **BOW LX II Array LED** Series continues the unique contemporary design inspired by the sleek styling of the BOW family. Separating the extruded aluminum driver housing and the individual die-cast aluminum linear LED engines: optimize the life of the LEDs and the Driver(s); and maximizes the lumen output of the fixture. The adjustable knuckle allows for up to 50° degrees of vertical adjustment for putting the light exactly where you need it.

The BLX-II Array LED fixture is offered with lumen packages ranging from 20,000 - 145,000. Choose between 3000, 4000 or 5000 Kelvin temperature of the LEDs. A unique Type 4-A automotive distribution pattern is available for the front rows of Auto Dealerships..

A durable polyester powder coat finish is guaranteed for five years; and is available in standard or custom colors.

The **BOW LX II Array LED** series is an exceptional choice for auto dealerships, shopping centers, commercial parking lots and general area lighting.

## Ordering Information

MODEL	OPTICS	LUMENS	KELVIN	VOLTAGE	MOUNTING	MOUNTING	FINISH	OPTIONS	OPTIONS
BLX-II-3	<b>T1</b> Type 1	<b>20L</b>	<b>3K</b> 3000K	<b>UNV</b> 120-277V	<b>PT</b> Post Top	<b>WM</b> Wall Mount BLX-II-3 & BLX-II-4 Only	<b>GY</b> Grey	<b>PCR-120</b> <b>PCR-208</b> <b>PCR-240</b> <b>PCR-277</b> <b>PCR-347</b> <b>PCR-480</b> Photocell & Receptacle	<b>WSC-8</b> Motion Sensor 8' Mounting Height
	<b>T2</b> Type 2	<b>30L</b>	<b>4K</b> 4000K	<b>8</b> 347V	<b>MA</b> Mast Arm Fitter	<b>AWM</b> Adjustable Wall Mount BLX-II-3 & BLX-II-4 Only	<b>SL</b> Silver Metallic	<b>WSC-20</b> Motion Sensor 9-20' Mounting Height	
	<b>T3</b> Type 3	<b>35L</b>	<b>5K</b> 5000K	<b>5</b> 480V	<b>KM</b> Knuckle Mount	<b>AM</b> Arm Mount Extended arm is needed for the BLX-III-6 & BLX-III-8 in D9, T9, T120 & QD configuration s	<b>BK</b> Black	<b>WSC-40</b> Motion Sensor 21-40' Mounting Height This option will require (1) FSIR 100 remote for programming	
	<b>T3L</b> Type 3 Long	<b>45L</b>			<b>BOA</b> Bolt-On Arm	<b>BAWP</b> Bolt-On Arm Wall Plate *BLX-3 & BLX-4 only	<b>SBK</b> Smooth Black	<b>PER</b> 3 Pin Photo Receptacle w/shorting cap	
	<b>T4</b> Type 4	<b>50L</b>			<b>UPMA-S</b> Universal Square Pole Mount Adaptor *Not available with BLX-II-8	<b>BAWP-XL</b> Bolt-On Arm Wall Plate-XL *BLX-6 & BLX-8 only	<b>WH</b> White	<b>5PINPER</b> <b>7PINPER</b> 5 OR 7 Pin Photo Receptacle w/shorting cap Requires Dimming Driver	<b>DS</b> Decorative Shroud
BLX-II-4	<b>T4L</b> Type 4 Long	<b>60L</b>			<b>TM</b> Trunnion Mount	<b>UPMA-R</b> Universal Round Pole Mount Adaptor *Not available with BLX-II-8	<b>SWH</b> Smooth White	<b>ROT-R</b> Rotated Optics Right Side	<b>DIM</b> 0-10v Dimming Driver *No Controls
	<b>T4A</b> Type 4 Automotive	<b>65L</b>					<b>BZ</b> Bronze	<b>ROT-L</b> Rotated Optics Left Side	<b>RPP</b> Round Pole Plate Adaptor For 3"Ø - 5"Ø Pole
	<b>T4A</b> Type 4 Automotive	<b>70L</b>					<b>GP</b> Graphite		
BLX-II-6	<b>T5SR</b> Type 5 Short Round	<b>80L</b>					<b>CC</b> Custom Color		
	<b>T5LR</b> Type 5 Long Round	<b>90L</b>							
	<b>T5LR</b> Type 5 Long Round	<b>100L</b>							
BLX-II-8	<b>T5LR</b> Type 5 Long Round	<b>110L</b>							
	<b>T5LS</b> Type Long Square	<b>120L</b>							
	<b>T5LS</b> Type Long Square	<b>130L</b>							
	<b>T5LS</b> Type Long Square	<b>145L</b>							

# Features & Specifications

## BLX-II ARRAY

### Housing

- The LED light engines are constructed of heavy-duty, die-cast aluminum, with external heat radiating fins.

### Driver Compartment

- The separate driver housing is constructed of 6063 T5 extruded aluminum alloy, with machined aluminum end covers and stainless steel fasteners for easy access to the LED driver(s) allowing for cooler operation and longer driver life. One-piece gasketing is utilized throughout the fixture for a weather tight IP66 rating.

### Thermal Management

- The BOW LX II Array Series provides excellent overall thermal management by maximizing the fixture's heat sink capabilities. This enables the BOW LX II Array Series to withstand higher ambient temperatures and drive currents without degrading LED life.
- The L70 test determines the point in an LEDs life when it reaches 70 percent of its initial output. The BOW LX II Array Series LEDs have been determined to last a minimum of 100,000 hours in 25°C environments when driven at 350 mA.

### Optical System

- The highest lumen output, LEDs are utilized in the BOW LX II Series. IES distribution Types 1, 2, 3, 4, 4A, 4L, T5LR, T5LS, and T5SR are available. LED light engines come in multiples of 32 LED Arrays.
- CRI values are 70.

### New LED Array Technology

- 4 Diodes now replace a single Led chip and operate at 25% of the drive current allowing for higher efficiency, less heat and longer life. (10 Year Warranty)
- More LEDs at a lower drive current provides a more comfortable visual effect.

### Quali-Guard® Finish

- The finish is a Quali-Guard® textured, chemically pretreated through a multiple-stage washer, electrostatically applied, thermoset polyester powder coat finish, with a minimum of 3-5 millimeter thickness. Finish is oven-baked at 400 °F to promote maximum adherence and finish hardness.
- All finishes are available in standard and custom colors.
- Finish is guaranteed for five (5) years.

### Mounting

- An adjustable knuckle slip fits over a 2 3/8" Tenon, and allows for up to 50° degrees of vertical adjustment in 10° degree increments from horizontal, as well as full side to side adjustment with the knuckle mount.
- The Bolt -On Arm (BOA) utilizes a 2 piece cleat system for easy installation. A Round Pole Plate Adaptor (RPP) is required for mounting to round poles.
- Mast Arm Fitter fits over a 2 3/8" tenon.
- Post Top fits over a 2 3/8" tenon and is adjustable up to 45°.
- Trunnion Mount is adjustable up to 45°
- Adjustable Wall Mount BLX-II-3 & BLX-II-4 Only
- Bolt-On Arm Wall Plate
- Bolt-On Arm Wall Plate-XL

### Electrical Assembly

- The BOW LX II Array Series is supplied with a choice of 350, 530, 700, or 1050 mA, 1200 mA and 1400 mA high-performance LED drivers, that accept 120v thru 480v, 50 Hz to 60 Hz, input.
- Rated for -40 °C to +55 °C operations.
- Power factor of 90%.
- THD less than or equal to 20%
- 20 kV surge protector supplied as standard.
- 0-10v Dimming Driver supplied as standard.

### Warranty

- Ten (10) year Limited Warranty on electrical components (Driver & LED Boards).
  - Five (5) year on finish.
- For full warranty information, please visit [visionairelighting.com](http://visionairelighting.com).

### Options

- Photocell & Receptacle
- Photo Receptacle
- Round pole plate adaptor
- Motion Sensor
- Pole Mounted Motion Sensor
- Universal Pole Mount Adaptor (BLX-II-3, BLX-II-4 & BLX-II-6 Only)
- Decorative Shroud
- Wireless Controls
- Rotated Optics

### Listings

- BOW LX II Array Series is UL listed, suitable for wet locations
- Meets ANSI C136.31-2010 3G Vibration Standards
- Powder Coated Tough™
- IP-66 Rated
- IDA Certification
- Pangealink



3000K must be selected with a fixed mount for IDA certification.  
Fixed mount must be selected for IDA dark sky certification.

BLX-II EPA Data				
Tilt Deg.	BLX-II-3	BLX-II-4	BLX-II-6	BLX-II-8
0	.7	.7	.8	1.1
10	.71	.9	1.2	1.6
20	1.02	1.3	1.8	2
30	1.32	1.7	2.4	3.1
40	1.62	2.1	3	3.9
50	1.86	2.4	3.4	4.5
Weight				
BLX-II	45 LBS	54 LBS	68 LBS	96 LBS

# BLX-II ARRAY LED Specifications

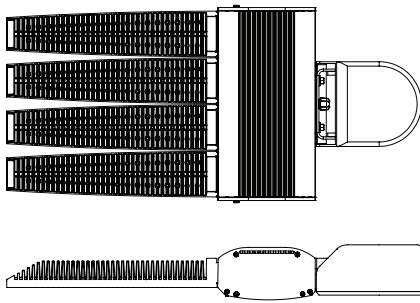
## Photometric Optical Summary



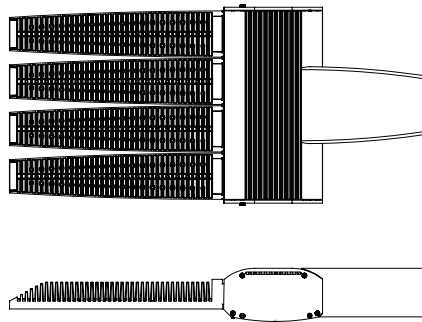
## Dimensions

Post Top	Mast Arm	Knuckle Mount	Bolt-On Arm	Trunnion	Adjustable Wall Mount
<b>Width:</b> BLX-II-3 15"	<b>Width:</b> BLX-II-3 15"	<b>Width:</b> BLX-II-3 15"	<b>Width:</b> BLX-II-3 15"	<b>Width:</b> BLX-II-3 15"	<b>Width:</b> BLX-II-3 15"
BLX-II-4 17"	BLX-II-4 17"	BLX-II-4 17"	BLX-II-4 17"	BLX-II-4 17"	BLX-II-4 17"
BLX-II-6 28"	BLX-II-6 28"	BLX-II-6 28"	BLX-II-6 28"	BLX-II-6 28"	BLX-II-6 28"
BLX-II-8 33"	BLX-II-8 33"	BLX-II-8 33"	BLX-II-8 33"	BLX-II-8 33"	BLX-II-8 33"
<b>Depth:</b> BLX-II-3 36"	<b>Depth:</b> BLX-II-3 36"	<b>Depth:</b> BLX-II-3 37"	<b>Depth:</b> BLX-II-3 34"	<b>Depth:</b> BLX-II-3 33"	<b>Depth:</b> BLX-II-3 33"
BLX-II-4 36"	BLX-II-4 36"	BLX-II-4 37"	BLX-II-4 34"	BLX-II-4 33"	BLX-II-4 33"
BLX-II-6 36"	BLX-II-6 36"	BLX-II-6 37"	BLX-II-6 34"	BLX-II-6 33"	BLX-II-6 33"
BLX-II-8 36"	BLX-II-8 36"	BLX-II-8 37"	BLX-II-8 34"	BLX-II-8 33"	BLX-II-8 33"
<b>Height:</b> BLX-II-3 6"	<b>Height:</b> BLX-II-3 5"	<b>Height:</b> BLX-II-3 5"	<b>Height:</b> BLX-II-3 5"/9"	<b>Height:</b> BLX-II-3 5"	<b>Height:</b> BLX-II-3 5"/8"
BLX-II-4 6"	BLX-II-4 5"	BLX-II-4 5"	BLX-II-4 5"/9"	BLX-II-4 5"	BLX-II-4 5"/8"
BLX-II-6 6"	BLX-II-6 5"	BLX-II-6 5"	BLX-II-6 5"/9"	BLX-II-6 5"	BLX-II-6 5"/8"
BLX-II-8 6"	BLX-II-8 5"	BLX-II-8 5"	BLX-II-8 5"/9"	BLX-II-8 5"	BLX-II-8 5"/8"

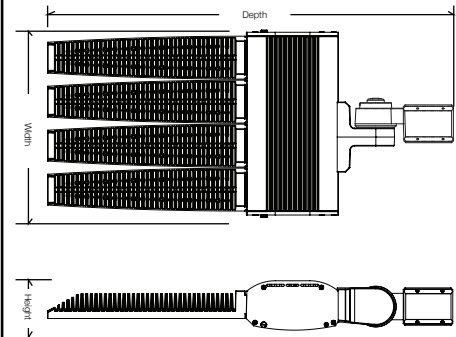
### Post Top



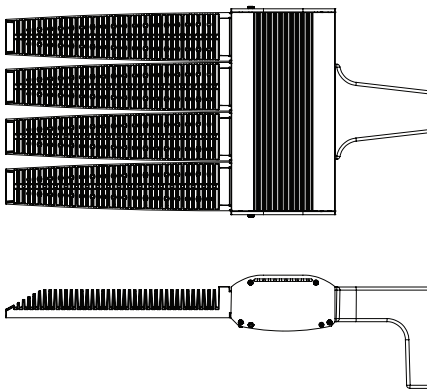
### Mast Arm



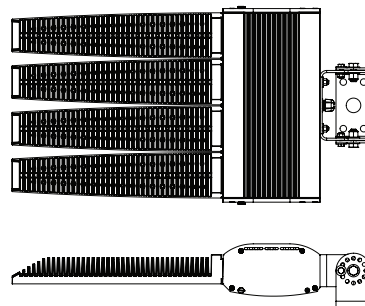
### Knuckle Mount



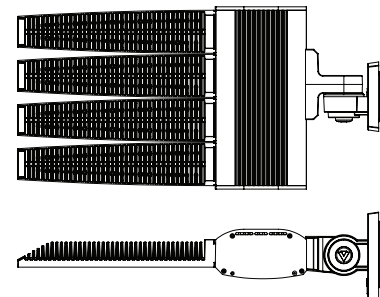
### Bolt-On Arm



### Trunnion Mount



### Adjustable Wall Mount



LED Specifications **BLX-II ARRAY**

BLX II - 3K LUMEN DATA													
Lumens	Current	LEDs	T1	T2	T3	T3L	T4	T4L	T4A	T5SR	T5LR	T5LS	Watts
20L	530	96AR BLX-II-3	19826	19730	19363	18445	19548	18628	19648	19862	19207	19943	149
25L	600		22801	22690	22268	21059	22481	21268	22596	22842	22089	22935	174
30L	700		25776	25651	25174	23673	25415	23908	25544	25823	24970	25928	200
35L	900		31806	31651	31062	29502	31360	29795	31519	31863	30811	31993	252
40L	1050		37835	37651	36951	35331	37304	35682	37494	37903	36652	38057	305
45L	1200		41993	41788	41012	38106	41404	38485	41614	42069	40680	42240	346
50L	1400		47673	47441	46559	42713	47004	43138	47243	47759	46183	47953	397
55L	1050	128AR BLX-II-4	48977	48738	47832	47107	48290	47577	48535	49065	47446	49265	407
60L	1200		55896	55623	54590	50808	55112	51314	55392	55996	54149	56225	456
65L	1300		59695	59404	58300	53879	58858	54415	59157	59803	57829	60046	498
70L	1400		63495	63185	62011	56950	62604	57517	62922	63609	61510	63868	541
80L	1000	192AR BLX-II-6	66978	66651	65413	59004	66039	59591	66374	67098	64884	67372	508
90L	1100		84116	83706	82150	73436	82936	74168	83357	84267	81486	84610	653
100L	1300		95189	94725	92965	80819	93854	81623	94331	95360	92213	95748	743
110L	1400		100910	100419	98553	85426	99495	86275	100001	101092	97756	101504	793
120L	1100	256AR BLX-II-8	110628	110089	108043	97915	109077	98890	109631	110827	107170	111279	861
130L	1200		117112	116541	114376	101615	115470	102627	116056	117323	113451	117801	905
145L	1400		133266	132616	129400	113902	130638	115034	131302	132734	129100	134049	1102
BLX II - 4K LUMEN DATA													
20L	530	96AR BLX-II-3	21956	21849	21443	20426	21648	20629	21758	21995	21270	22085	149
25L	600		25251	25127	24661	23321	24896	23553	25023	25296	24461	25399	174
30L	700		28545	28406	27878	26216	28145	26477	28288	28596	27653	28713	200
35L	900		35222	35050	34399	32761	34728	32996	34905	35285	34121	35429	252
40L	1050		41899	41695	40920	39126	41312	39515	41522	41975	40590	42146	305
45L	1200		46504	46277	45417	42200	45852	42619	46085	46588	45050	46777	346
50L	1400		52794	52537	51560	47301	52054	47771	52318	52889	51144	53104	397
55L	1050	128AR BLX-II-4	54238	53973	52970	52168	53477	52687	53749	54335	52542	54557	407
60L	1200		61900	61598	60454	56265	61032	56826	61342	62012	59965	62264	456
65L	1300		66108	65785	64563	59667	65181	60261	65512	66227	64041	66496	498
70L	1400		70315	69973	68672	63068	69329	63695	69681	70442	68117	70729	541
80L	1000	192AR BLX-II-6	74173	73811	72440	65342	73132	65992	73504	74306	71854	74609	508
90L	1100		93151	92697	90975	81325	91845	82135	92312	93319	90240	93699	653
100L	1300		105414	104900	102951	89500	103936	90391	104464	105604	102119	106034	743
110L	1400		111750	111206	109139	94602	110183	95543	110743	111951	108257	112407	793
120L	1100	256AR BLX-II-8	129692	129060	126662	108433	127873	109513	128523	129925	125638	130455	861
130L	1200		122512	121915	119649	112531	120794	113652	121407	122732	118682	123232	905
145L	1400		147581	146862	143300	126137	144671	127391	145406	146992	142968	148449	1102

Visit [www.visionairelighting.com](http://www.visionairelighting.com) for up-to-the-minute chart information, including types not listed here.  
\*For 5K multiply 4K values by 1.0

# BLX-II ARRAY LED Specifications

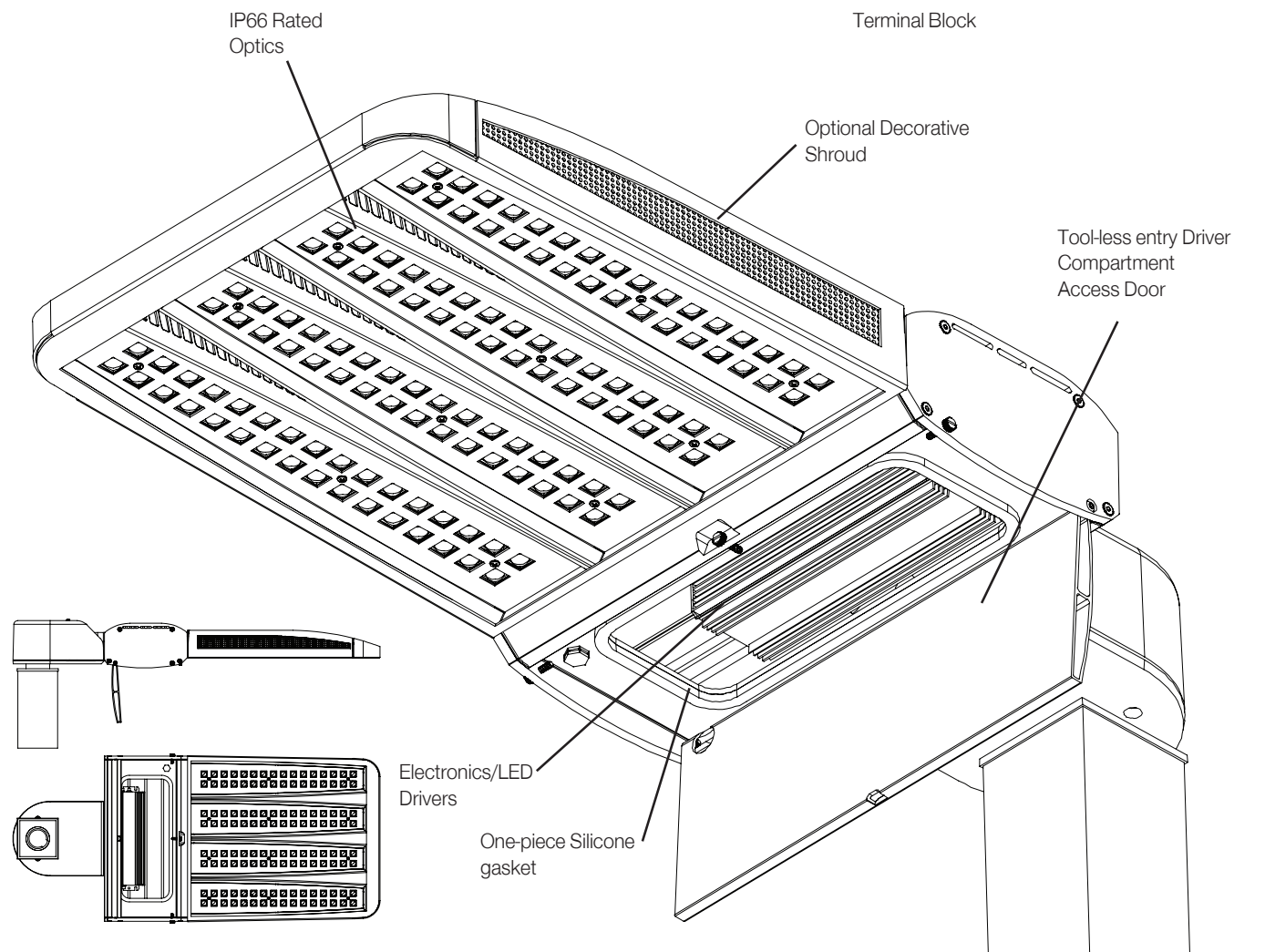
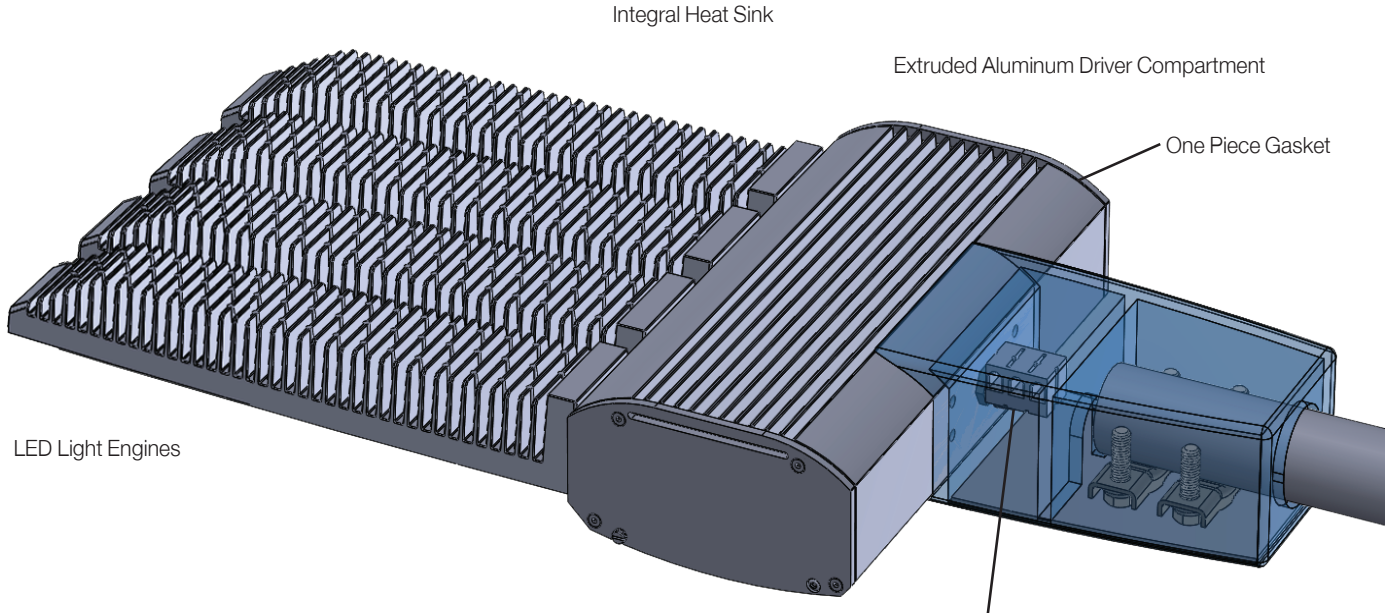
BLX II 3K LPW DATA													
Lumens	Current	LEDs	T1	T2	T3	T3L	T4	T4L	T4A	T5SR	T5LR	T5LS	Watts
20L	530	96AR BLX-II-3	133	133	130	124	131	125	132	134	129	134	149
25L	600		131	130	128	121	129	122	130	131	127	132	174
30L	700		129	129	126	119	127	120	128	129	125	130	200
35L	900		126	125	123	117	124	118	125	126	122	127	252
40L	1050		124	123	121	116	122	117	123	124	120	125	305
45L	1200		122	121	119	110	120	111	120	122	118	122	346
50L	1400		120	120	117	108	118	109	119	120	116	121	397
55L	1050	128AR BLX-II-4	120	120	118	116	119	117	119	121	117	121	407
60L	1200		123	122	120	111	121	113	121	123	119	123	456
65L	1300		120	119	117	108	118	109	119	120	116	120	498
70L	1400		117	117	115	105	116	106	116	118	114	118	541
80L	1000	192AR BLX-II-6	132	131	129	116	130	117	131	132	128	133	508
90L	1100		129	128	126	112	127	114	128	129	125	130	653
100L	1300		128	128	125	109	126	110	127	128	124	129	743
110L	1400		127	127	124	108	125	109	126	127	123	128	793
120L	1100	256AR BLX-II-8	128	128	125	114	127	115	127	129	124	129	861
130L	1200		129	129	126	112	128	113	128	130	125	130	905
145L	1400		121	120	117	103	119	104	119	120	117	122	1102
BLX II 4K LPW DATA													
20L	530	96AR BLX-II-3	148	147	144	137	146	139	146	148	143	149	149
25L	600		145	144	142	134	143	135	144	145	140	146	174
30L	700		143	142	140	131	141	133	142	143	139	144	200
35L	900		140	139	136	130	138	131	138	140	135	140	252
40L	1050		137	137	134	128	135	129	136	137	133	138	305
45L	1200		135	134	131	122	133	123	133	135	130	135	346
50L	1400		133	132	130	119	131	120	132	133	129	134	397
55L	1050	128AR BLX-II-4	133	133	130	128	131	130	132	134	129	134	407
60L	1200		136	135	133	123	134	125	134	136	131	137	456
65L	1300		133	132	130	120	131	121	131	133	128	133	498
70L	1400		130	129	127	117	128	118	129	130	126	131	541
80L	1000	192AR BLX-II-6	146	145	143	129	144	130	145	146	141	147	508
90L	1100		143	142	139	124	141	126	141	143	138	143	653
100L	1300		142	141	139	120	140	122	141	142	137	143	743
110L	1400		141	140	138	119	139	120	140	141	136	142	793
120L	1100	256AR BLX-II-8	143	143	140	120	141	121	142	144	139	144	861
130L	1200		142	142	139	131	140	132	141	142	138	143	905
145L	1400		134	133	130	114	131	116	132	133	130	135	1102
<small>Visit <a href="http://www.visionairelighting.com">www.visionairelighting.com</a> for up-to-the-minute chart information, including types not listed here. *For 5K multiply 4K values by 1.0</small>													

LED Specifications **BLX-II ARRAY**

BLX II 3K BUG DATA																																				
Lumens	Current	LEDs	T1			T2			T3			T3L			T4			T4L			T4A			T5SR			T5LR			T5LS			Watts			
			B	U	G	B	U	G	B	U	G	B	U	G	B	U	G	B	U	G	B	U	G	B	U	G	B	U	G	B	U	G				
20L	530	96AR BLX-II-3	4	0	4	3	0	3	3	0	3	3	0	3	3	0	3	3	0	4	3	0	3	4	0	2	4	0	3	5	0	3	149			
25L	600		4	0	4	3	0	3	3	0	3	3	0	3	3	0	5	3	0	4	3	0	5	3	0	3	4	0	2	5	0	3	5	0	3	174
30L	700		5	0	5	3	0	3	3	0	4	4	0	5	3	0	4	3	0	5	3	0	3	4	0	2	5	0	4	5	0	3	200			
35L	900		5	0	5	4	0	4	3	0	4	4	0	5	4	0	4	4	0	5	4	0	3	5	0	3	5	0	4	5	0	4	252			
40L	1050		5	0	5	4	0	4	4	0	4	4	0	5	4	0	5	4	0	5	4	0	4	5	0	3	5	0	5	5	0	4	305			
45L	1200		5	0	5	4	0	4	4	0	5	4	0	5	4	0	5	4	0	5	4	0	5	4	0	4	5	0	4	5	0	5	5	0	4	346
50L	1400		5	0	5	4	0	4	4	0	5	4	0	5	4	0	5	4	0	5	4	0	4	5	0	4	5	0	5	5	0	5	5	0	5	397
55L	1050	128AR BLX-II-4	5	0	5	4	0	4	4	0	5	5	0	5	4	0	5	4	0	5	4	0	4	5	0	4	5	0	5	5	0	5	5	0	5	407
60L	1200		5	0	5	5	0	5	4	0	5	5	0	5	5	0	5	4	0	5	5	0	4	5	0	4	5	0	5	5	0	5	5	0	5	456
65L	1300		5	0	5	5	0	5	5	0	5	5	0	5	5	0	5	5	0	5	5	0	4	5	0	4	5	0	5	5	0	5	5	0	5	498
70L	1400	5	0	5	5	0	5	5	0	5	5	0	5	5	0	5	5	0	5	5	0	4	5	0	5	5	0	5	5	0	5	5	0	5	541	
80L	1000	192AR BLX-II-6	5	0	5	5	0	5	5	0	5	5	0	5	5	0	5	5	0	5	5	0	4	5	0	5	5	0	5	5	0	5	5	0	5	508
90L	1100		5	0	5	5	0	5	5	0	5	5	0	5	5	0	5	5	0	5	5	0	5	5	0	5	5	0	5	5	0	5	5	0	5	653
100L	1300		5	0	5	5	0	5	5	0	5	5	0	5	5	0	5	5	0	5	5	0	5	5	0	5	5	0	5	5	0	5	5	0	5	743
110L	1400	5	0	5	5	0	5	5	0	5	5	0	5	5	0	5	5	0	5	5	0	5	5	0	5	5	0	5	5	0	5	5	0	5	793	
120L	1100	256AR BLX-II-8	5	0	5	5	0	5	5	0	5	5	0	5	5	0	5	5	0	5	5	0	5	5	0	5	5	0	5	5	0	5	5	0	5	861
130L	1200		5	0	5	5	0	5	5	0	5	5	0	5	5	0	5	5	0	5	5	0	5	5	0	5	5	0	5	5	0	5	5	0	5	905
145L	1400		5	0	5	5	0	5	5	0	5	5	0	5	5	0	5	5	0	5	5	0	5	5	0	5	5	0	5	5	0	5	5	0	5	1102
BLX II 4K BUG DATA																																				
20L	530	96AR BLX-II-3	4	0	4	3	0	3	3	0	3	3	0	3	3	0	3	3	0	4	3	0	3	4	0	2	5	0	3	5	0	3	149			
25L	600		5	0	5	3	0	3	3	0	4	4	0	5	3	0	4	3	0	5	3	0	3	4	0	2	5	0	4	5	0	3	174			
30L	700		5	0	5	4	0	4	3	0	4	4	0	5	3	0	4	3	0	5	3	0	3	5	0	3	5	0	4	5	0	4	200			
35L	900		5	0	5	4	0	4	4	0	4	4	0	5	4	0	5	4	0	5	4	0	4	5	0	3	5	0	4	5	0	4	252			
40L	1050		5	0	5	4	0	4	4	0	5	4	0	5	4	0	5	4	0	5	4	0	4	5	0	4	5	0	5	5	0	4	305			
45L	1200		5	0	5	4	0	4	4	0	5	4	0	5	4	0	5	4	0	5	4	0	5	4	0	4	5	0	4	5	0	5	5	0	5	346
50L	1400		5	0	5	5	0	4	4	0	5	5	0	5	5	0	5	4	0	5	5	0	4	5	0	4	5	0	5	5	0	5	5	0	5	397
55L	1050	128AR BLX-II-4	5	0	5	5	0	5	4	0	5	5	0	5	5	0	5	4	0	5	5	0	4	5	0	4	5	0	5	5	0	5	5	0	5	407
60L	1200		5	0	5	5	0	5	5	0	5	5	0	5	5	0	5	5	0	5	5	0	4	5	0	4	5	0	5	5	0	5	5	0	5	456
65L	1300		5	0	5	5	0	5	5	0	5	5	0	5	5	0	5	5	0	5	5	0	4	5	0	5	5	0	5	5	0	5	5	0	5	498
70L	1400	5	0	5	5	0	5	5	0	5	5	0	5	5	0	5	5	0	5	5	0	5	5	0	5	5	0	5	5	0	5	5	0	5	541	
80L	1000	192AR BLX-II-6	5	0	5	5	0	5	5	0	5	5	0	5	5	0	5	5	0	5	5	0	5	5	0	5	5	0	5	5	0	5	5	0	5	508
90L	1100		5	0	5	5	0	5	5	0	5	5	0	5	5	0	5	5	0	5	5	0	5	5	0	5	5	0	5	5	0	5	5	0	5	653
100L	1300		5	0	5	5	0	5	5	0	5	5	0	5	5	0	5	5	0	5	5	0	5	5	0	5	5	0	5	5	0	5	5	0	5	743
110L	1400	5	0	5	5	0	5	5	0	5	5	0	5	5	0	5	5	0	5	5	0	5	5	0	5	5	0	5	5	0	5	5	0	5	793	
120L	1100	256AR BLX-II-8	5	0	5	5	0	5	5	0	5	5	0	5	5	0	5	5	0	5	5	0	5	5	0	5	5	0	5	5	0	5	5	0	5	861
130L	1200		5	0	5	5	0	5	5	0	5	5	0	5	5	0	5	5	0	5	5	0	5	5	0	5	5	0	5	5	0	5	5	0	5	905
145L	1400		5	0	5	5	0	5	5	0	5	5	0	5	5	0	5	5	0	5	5	0	5	5	0	5	5	0	5	5	0	5	5	0	5	1102

# BLX-II ARRAY LED Specifications

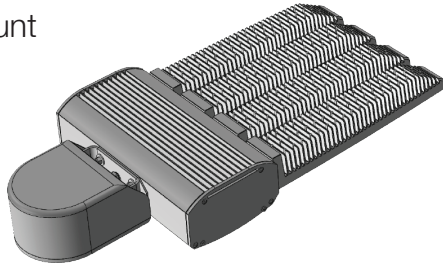
## BLX Features



LED Specifications **BLX-II ARRAY**

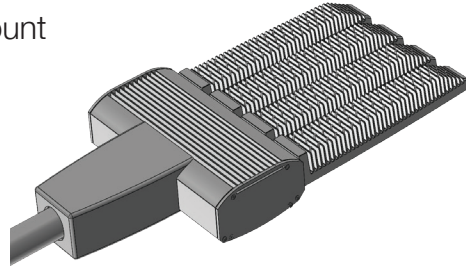
## BLX-II Array Mounting Options

## Post Top Mount



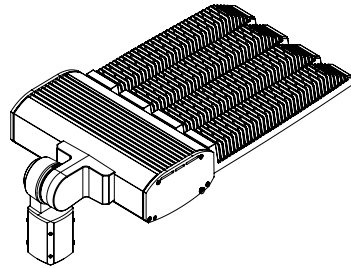
Post Top fits over a 2" - 2-3/8" tenon and is adjustable up to 45 degrees.

## Mast Arm Mount



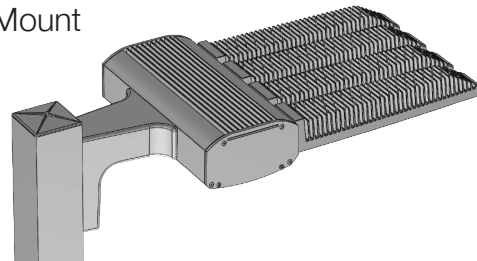
Mast Arm Fitter fits over a 2" - 2-3/8" tenon.

## Knuckle Mount



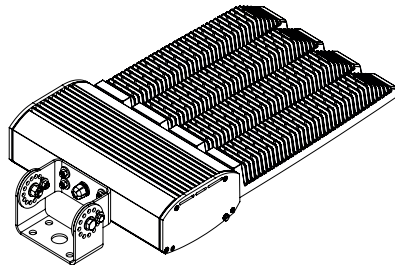
An adjustable knuckle slip fits over a 2-3/8" Tenon, and allows for up to 50 degrees of vertical adjustment in 10 degree increments from horizontal, as well as full side to side adjustment with the knuckle mount.

## Bolt-On Arm Mount



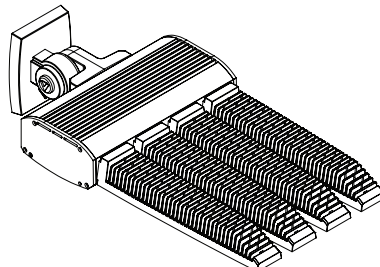
The Bolt -On Arm (BOA) utilizes a 2 piece cleat system for easy installation. A Round Pole Plate Adaptor (RPP) is required for mounting to round poles.

## Trunnion Mount



Trunnion Mount is adjustable up to 50 degrees.

## Adjustable Wall Mount



Adjustable Wall Mount allows for up to 50 degrees of vertical adjustment in 10-degree increments.